



COMMScope®
NETCONNECT®

Netconnect Solutions®

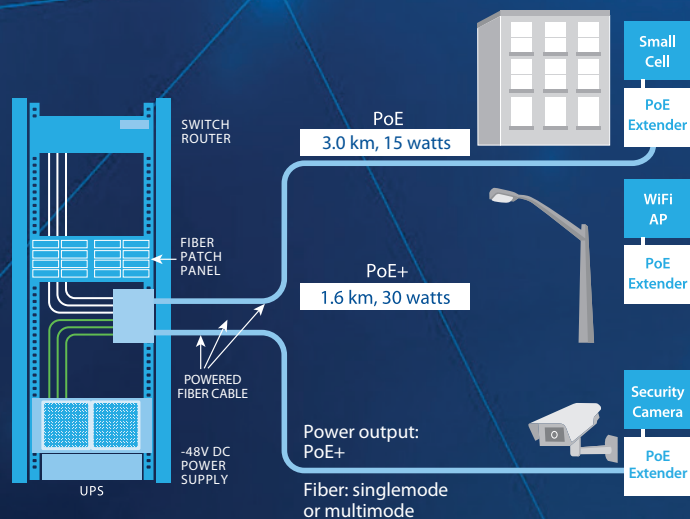
Central America Ordering Guide

now
meets
next

Sistema Energizado de Fibra Óptica



COMMSCOPE®
NETCONNECT®



Solución completa "rack al dispositivo" para proveer energía y comunicaciones a equipos IP a distancias mayores a 100m, alimentados a través de un puerto PoE/PoE+.

Para mayor información acerca del Sistema Energizado de Fibra Óptica de CommScope, envíe un correo a Vanessa Prada • vanessa.prada@commscope.com y/o Mariana Ramírez • mariana.ramirez@commscope.com

www.commscope.com

Contenido

Copper solutions Pag.

Category 6A U/UTP products

Category 6A U/UTP cables	2
Category 6A and 6 U/UTP modular panels	2
Category 6A U/UTP patch panels	2
Category 6A U/UTP Jacks	3
MP-Color Clip for NPC& CO5e Patch Cords	3
Length Options for NPC and CO5e patch cords	3
Category 6A U/UTP patch cord	3

Category 6A F/UTP products

Category 6A F/UTP cables	4
Category 6A F/UTP modular panels	4
Category 6A F/UTP jacks	4
Terminations Tools	4
Category 6A F/UTP patch cord	5

Category 6 U/UTP products

Category 6 U/UTP cables	5
Category 6 U/UTP patch panel	5
Category 6 U/UTP Jacks	6
Category 6 U/UTP patch cord	6
CCA Connectors	6

Basic Configuration for Fiber Optic Cables 7

Single Unit Distribution Cables

Plenum Single Unit Distribution Cables	8
Riser Single Unit Distribution Cables	8

Multi Unit Distribution Cables

Plenum Single Unit Distribution Cables	9
Riser Single Unit Distribution Cables	9

Indoor/Outdoor Cables

Gel-free Stranded Loose Tube Riser Cables	10
Indoor/Outdoor Tight Buffer LSZH/ Riser Cables	10
Gel-free Stranded Loose Tube Riser Cables	11
Light Duty Riser Indoor/Outdoor Cables	11

Outside Plant Cables

All Dry Outside Stranded Loose Tube Non-Armored All Dielectric	
Gel-free Buffer Tube Cables	12
All Dry Outside Stranded Loose Tube Armored Gel-free Buffer Tube Cables	12

Fiber solutions Pag.

Fiber optic panels and wall enclosures	13
Pre-terminated modules	13
Splice cassettes	14
Adapter panels for 1U, 2U and 4U shelves	14
MPO trunk configurator	15
Fiber Optic Patch Cords configurator	16
Fiber optic pigtailed configurator	17
Standard fiber optic connectors	18
Fiber optic QWIK II Connectors®	18

Faceplates

Faceplates	18
------------	----

Racks, Shelves and Panels

19" Racks	19
Shelves	19
Filler Panels	19

Cable Management

Horizontal Cable Management	20
Vertical Cable Management	20
Powered Fiber Cable	20
Hybrid Cable	20

Copper solutions

Category 6A U/UTP products

Category 6A products



Category 6A U/UTP cables

Material ID	Product number	Description	Jacket Color	Length	Packing
874035104/10	CS44P BLUE RL	CS44P ETL verified Category 6A U/UTP Cable, plenum	Blue	1000 ft	REEL
874044404/10	CS44P GRY RL	CS44P ETL verified Category 6A U/UTP Cable, plenum	Gray	1000 ft	REEL
874026804/10	CS44P WHT RL	CS44P ETL verified Category 6A U/UTP Cable, plenum	White	1000 ft	REEL
884031004/10	CS44R BLUE RL	CS44R ETL verified Category 6A U/UTP Cable, Riser	Blue	1000 ft	REEL
884019304/10	CS44R GRY RL	CS44R ETL verified Category 6A U/UTP Cable, Riser	Gray	1000 ft	REEL
884025504/10	CS44R WHT RL	CS44R ETL verified Category 6A U/UTP Cable, Riser	White	1000 ft	REEL

Category 6A and 6 U/UTP modular panels (Jacks not included)



Material ID	Description
SL Opening	
760237040	CPP-UDDM-SL-1U-24 modular SL series patch panel, unloaded, 24 port
760237041	CPP-UDDM-SL-2U-48 modular SL series patch panel, unloaded, 48 port
760237042	CPPA-UDDM-SL-1U-24 modular SL series patch panel, angled, unloaded, 24 port
760237043	CPPA-UDDM-SL-1U-48 modular SL series patch panel, angled, unloaded, 48 port

Category 6A U/UTP patch panels (distribution module based)



Material ID	Description
760237032	NPP-6A-DM-1U-24 Universal 10G 1U panel assembly, 24 port
760237033	NPP-6A-DM-2U-48 Universal 10G 2U panel assembly, 48 port
760237034	NPPA-6A-DM-1U-24 Angled universal 10G 1U panel, 24 port
760237035	NPPA-6A-DM-2U-48 Angled universal 10G 2U panel, 48 port

Copper solutions

Category 6A U/UTP products

Category 6A products



Category 6A U/UTP Jacks

Material ID	Description	Color
1933476-1	Category 6A U/UTP SL jack	Almond
1933476-2	Category 6A U/UTP SL jack	Black
1933476-4	Category 6A U/UTP SL jack	Gray
1933476-5	Category 6A U/UTP SL jack	Orange
1933476-6	Category 6A U/UTP SL jack	Blue
1933476-7	Category 6A U/UTP SL jack	Red
1933476-8	Category 6A U/UTP SL jack	Yellow
1933476-9	Category 6A U/UTP SL jack	Green
1-1933476-0	Category 6A U/UTP SL jack	Violet
1-1933476-1	Category 6A U/UTP SL jack	Electrical Ivory
1-1933476-3	Category 6A U/UTP SL jack	Alpine White

MP-ColorClip for NPC & CO5e Patch Cords



Length Options for NPC and CO5e patch cords

MID	Color (Pkg 50)
2843022-1	Almond
2843022-2	Black
2843022-3	White
2843022-4	Gray
2843022-5	Orange
2843022-6	Blue
2843022-7	Red
2843022-8	Yellow
2843022-9	Green

LSZH (Z) Patch Cords	
Length (M)	Increments
0.5 – 3	50 cm.
3 – 10	1 m.
10 – 20	2 m.
20 – 35	5 m.

CM (V) Patch Cords	
Length (ft)	Increments
1 – 20	1 ft.
20 – 50	5 ft.
50 – 100	10 ft.

Category 6A U/UTP patch cord



Material ID	Product number	Description
NPC6AUVDB	NPC6A	U/UTP modular patch cord

Material ID BASE code	Product number	Type	Jacket Color	Cable/Cordage length options	UOM
NPC6AUVDB	NPC6A	U/UTP modular patch cord	BK OR RD WH YL GY GN BL	3-100ft	F

Ordering Material ID Example: NPC6AUVDB - BL 007 F

Copper solutions

Category 6A F/UTP products

Category 6A products



Category 6A F/UTP cables

Material ID	Product number	Description	Jacket Color	Length	Packing
884018404/10	CS44R BLUE REEL	CS44R ETL verified Category 6A F/UTP cable, Riser	Blue	1000 ft	Reel
884033904/10	CS44R GRAY REEL	CS44R ETL verified Category 6A F/UTP cable, Riser	Gray	1000 ft	Reel
884017404/10	CS44R WHITE REEL	CS44R ETL verified Category 6A F/UTP cable, Riser	White	1000 ft	Reel

Category 6A F/UTP modular panels



Material ID	Product number	Description
SL opening		
760237046	CPP-SDDM-SL-1U-24	Modular Shield SL Series patch panel, no jacks, 24 port
760237047	CPP-SDDM-SL-2U-48	Modular Shield SL Series patch panel, no jacks, 48 port
760237048	CPPA-SDDM-SL-1U-24	Modular Shield SL Series patch panel, angled, no jacks, 24 port
760237049	CPPA-SDDM-SL-2U-48	Modular Shield SL Series patch panel, angled, no jacks, 48 port

Category 6A F/UTP jacks



Material ID	Product number	Description
SL opening		
1711342-2		Category 6A F/UTP jack
1711160-2		Category 6A F/UTP jack, with dust cover

Terminations Tools



Material ID	Product number	Description
SL opening		
1725150 - 1	N/A	Modular jack termination SL tool kit with lacing fixture

Copper solutions

Category 6A products

Category 6A F/UTP products



Category 6A U/UTP patch cord

Material ID	Product number	Description
NPC6ASVDB	NPC6ASVDB	F/UTP patch cord

Material ID BASE code	Product number	Type	Jacket Color								Cable/Cordage length options	UOM
			BK	OR	RD	WH	YL	GY	GN	BL		
NPC6ASVDB	NPC6AS	F/UTP patch cord	BK	OR	RD	WH	YL	GY	GN	BL	3-100ft	FT

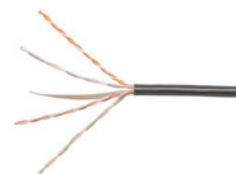
Ordering Material ID Example:

NPC6ASVDB - GY 007 F

Copper solutions

Category 6 products

Category 6 U/UTP products



Category 6 U/UTP cables

Material ID	Product number	Description	Jacket Color	Length	Packing
874049914/10	CS34P BLUE CPK	CS34P ETL Verified Category 6 U/UTP cable, plenum	Blue	1000 ft	CommPak
874042114/10	CS34P GRAY CPK	CS34P ETL Verified Category 6 U/UTP cable, plenum	Gray	1000 ft	CommPak
874019914/10	CS34P WHIT E CPK	CS34P ETL Verified Category 6 U/UTP cable, plenum	White	1000 ft	CommPak
874034114/10	CS34P YELLOW CPK	CS34P ETL Verified Category 6 U/UTP cable, plenum	Yellow	1000 ft	CommPak
874017414/10	CS34P RED CPK	CS34P ETL Verified Category 6 U/UTP cable, plenum	Red	1000 ft	CommPak
884017214/10	CS34R BLUE CPK	CS34R ETL Verified Category 6 U/UTP cable, Riser	Blue	1000 ft	CommPak
884015814/10	CS34R GRAY CPK	CS34R ETL Verified Category 6 U/UTP cable, Riser	Gray	1000 ft	CommPak
884024414/10	CS34R WHITE CPK	CS34R ETL Verified Category 6 U/UTP cable, Riser	White	1000 ft	CommPak
884025814/10	CS34R YELLOW CPK	CS34R ETL Verified Category 6 U/UTP cable, Riser	Yellow	1000 ft	CommPak
884029114/10	CS34R RED CPK	CS34R ETL Verified Category 6 U/UTP cable, Riser	Red	1000 ft	CommPak
884019904/10	CS34O BLK	CS34O BLK C6 4/24 U/UTP RL 1KFT	Black	1000 Ft	Reel
884019984/30	CS34O BLK	CS34O BLK C6 4/24 U/UTP RL 3KFT	Black	3000 FT	Reel

Category 6 U/UTP patch panel (distribution module based)



Material ID	Product number	Description
760237024	NPP-6-DM-1U-24	Universal Category 6 1U panel, 24 port
760237025	NPP-6-DM-2U-48	Universal Category 6 2U panel, 48 port
760237026	NPPA-6-DM-1U-24	Angled universal Category 6 1U panel, 24 Port
760237035	NPPA-6A-DM-2U-48	Angled universal Category 6 2U panel, 48 Port

Copper solutions

Category 6 products

Category 6 U/UTP products



Category 6 U/UTP Jacks

Material ID	Description	Color
SL Opening (without dust cover)		
1375055-1	Category 6 UTP jack, SL	Almond
1375055-2	Category 6 UTP jack, SL	Black
1375055-4	Category 6 UTP jack, SL	Gray
1375055-5	Category 6 UTP jack, SL	Orange
1375055-6	Category 6 UTP jack, SL	Blue
1375055-7	Category 6 UTP jack, SL	Red
1375055-8	Category 6 UTP jack, SL	Yellow
1375055-9	Category 6 UTP jack, SL	Green
1-1375055-0	Category 6 UTP jack, SL	Violet
1-1375055-1	Category 6 UTP jack, SL	Electrical Ivory
1-1375055-3	Category 6 UTP jack, SL	Alpine White

Category 6 U/UTP patch cord



Material ID	Product number	Description
NPC06UVDB	NPC06	U/UTP modular patch cord

Material ID BASE code	Product number	Type	Jacket Color	Cable/Cordage length options	UOM
NPC06UVDB	NPC06	U/UTP modular patch cord	BK OR RD WH YL GY GN BL	1-100ft	F

Ordering Material ID Example:

NPC06UVDB - BL 007 F

CCA Connectors

CCA Connector Description	MID
Connector & C6 Pigtail, LSZH, Black, 18"	760235585
Connector & C6 Pigtail, Plenum, Black, 18"	760235587
Connector & C6a Pigtail, LSZH, Black, 18"	760235589
Connector & C6a Pigtail, Plenum, Black, 18"	760235591
Connector Only	760234921





Sample Part Number

Position 1: Cable Style P - 012 - DS - 5L - F SU AQ

D All Dry Outside Plant	Z Zero Halogen Indoor/Outdoor	O Outside Plant (Arid Core®)
M Messenger	P Plenum	S Outside Plant (All Dielectric, Self-Supporting)
N Zero Halogen (Indoor Only)	R Riser	

Position 2: Fiber Count P - 012 - DS - 5L - F SU AQ

Total Fiber Count (XXX variable in catalog number.)

Position 3: Cable Construction P - 012 - DS - 5L - F SU AQ

Outside Plant Cable Constructions

LA Stranded Loose Tube Armored	DA Drop Armored	MN Mini-drop All Dielectric
LN Stranded Loose Tube Non Armored All Dielectric	DF Flat Drop All-Dielectric	
LD Stranded Loose Tube All Dielectric/Dual Jacket	DN Drop All Dielectric	
L2 Stranded Loose Tube Dual Jacket/Single Armor	CN Central Tube Non Armored All Dielectric	
L3 Stranded Loose Tube Triple Jacket/Dual Armor	CA Central Tube Armored	

Indoor & Indoor/Outdoor Cable Constructions

Tight Buffer	Loose Tube	
DS Distribution	LN Stranded Loose Tube Non Armored All Dielectric	CN Central Tube All Dielectric
ZC Zipcord	LH Stranded Loose Tube Heavy Duty Non Armored	

FiberGuard® For tight buffered and loose tube I/O cables only, use first character of the construction code above plus one of the following:

Z Aluminum Armor w/Jacket

*LH cables cannot be Interlocked Armored

Position 4: Fiber Type P - 012 - DS - 5L - F SU AQ

8W TeraSPEED single-mode	5L 50µm, LazrSPEED 300, multimode (OM3)	5K 50µm, LazrSPEED 550, multimode (OM4)
--------------------------	---	---

CM Composite (single-mode & multimode) HY Hybrid (Fiber, Copper, Coax)

*XY variable in catalog number

Position 5: Jacket Print P - 012 - DS - 5L - F SU AQ

F Printed in Feet (Standard)	M Printed in Meters	X Special Print
------------------------------	---------------------	-----------------

Position 6: Miscellaneous Values P - 012 - DS - 5L - F SU AQ

For cordage, value indicates outside diameter; otherwise additional description

01-12 Fiber Count per Subunit	SU Single Unit	MU Multi Unit
-------------------------------	----------------	---------------

Cordage

16 1.6mm Jacket OD	20 2.0mm Jacket	25 2.5mm Jacket OD	29 2.9mm Jacket OD
--------------------	-----------------	--------------------	--------------------

Position 7: Color Field P - 012 - DS - 5L - F SU AQ

For Outside Plant Cables, this field designates color of stripe/tracer. Outside Plant Cables are manufactured with a standard black jacket — No Stripe (NS). Stripes (tracers) are also available in the following colors (min. order required):

BL Blue	OR Orange	GR Green	BR Brown	SL Slate	WH White
RD Red	BK Black	YL Yellow	VI Violet	RS Rose	AQ Aqua

For Distribution Cables, this field indicates jacket color. Standard jacket colors:

BK Black	YL Yellow for single-mode
	AQ Aqua for LazrSPEED & LazrSPEED Composites

*ZZ variable in catalog number. *I/O and OSP Cables are black jacket only

For Indoor Distribution Cables and Zipcords. Available Non Standard jacket colors: (min. order required)

BL Blue	OR Orange	GR Green	BR Brown	SL Slate	WH White
RD Red	BK Black	YL Yellow	VI Violet	RS Rose	AQ Aqua

Positions 8-11: When Position 4 is CM P - 012 - DS - CM - F SU AQ 8W 006 5L 006

Position 8: First Fiber Type

Position 10: Second Fiber Type Pos. 8 Pos. 9 Pos. 10 Pos. 11

Position 9: First Fiber Count

Position 11: Second Fiber Count

When single-mode and multimode fibers are used in a composite, then single-mode is positioned first

Positions 8-11: When Position 4 is HY O - 012 - DN - HY - F12NS 8W 006 F6SSBW GSM 40T

Position 8: Fiber Type

Position 10: Copper Type

Position 12: Tube Size

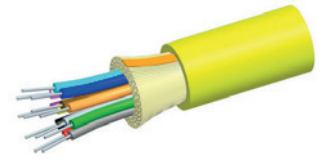
Pos. 8 Pos. 9 Pos. 10 Pos. 11 Pos. 12

Position 9: Fiber Count

Position 11: Messenger Description

When no messenger is present, Tube Size moves to Position 11 and there is no Position 12. When Position 3 is LH, LN or LA, Position 8 is 25D, 20G or 20T

*Other options are available that are not currently listed in the above chart.



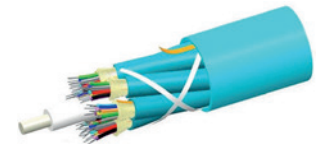
Plenum Single Unit Distribution Cables

Material ID	Product number	Fiber Count	Outer Diameter inch/mm	Min. Bend Radius		Max. Tensile Load		Weight	
				Loaded inch/cm	Unloaded inch/cm	Short Term lbs./Newton	Long Term lbs./Newton	lbs./1000'	kg./1000'
760012138	P-006-DS-5K-FSUAQ	6	0.19/4.74	2.8/7.1	1.9/4.7	150/667	45/200	14,8	22
760006411	P-012-DS-5K-FSUAQ	12	0.23/5.77	3.4/8.6	2.3/5.8	150/667	45/200	21	31
760018697	P-024-DS-5K-FSUAQ	24	0.33/8.5	5.0/12.7	3.3/8.5	300/1335	90/400	47	70
700009772	P-006-DS-5L-FSUAQ	6	0.19/4.74	2.8/7.1	1.9/4.7	150/667	45/200	14,8	22
700009731	P-012-DS-5L-FSUAQ	12	0.23/5.77	3.4/8.6	2.3/5.8	150/667	45/200	21	31
760018689	P-024-DS-5L-FSUAQ	24	0.33/8.5	5.0/12.7	3.3/8.5	300/1335	90/400	47	70
760004333	P-006-DS-8W-FSUYL	6	0.19/4.74	2.8/7.1	1.9/4.7	150/667	45/200	14,8	22
760004358	P-012-DS-8W-FSUYL	12	0.23/5.77	3.4/8.6	2.3/5.8	150/667	45/200	21	31
760018630	P-024-DS-8W-FSUYL	24	0.33/8.5	5.0/12.7	3.3/8.5	300/1335	90/400	47	70

Riser Single Unit Distribution Cables

Material ID	Product number	Fiber Count	Outer Diameter inch/mm	Min. Bend Radius		Max. Tensile Load		Weight	
				Loaded inch/cm	Unloaded inch/cm	Short Term lbs./Newton	Long Term lbs./Newton	lbs./1000'	kg./1000'
760012104	R-006-DS-5K-FSUAQ	6	0.2/5.04	3.0/7.6	2.0/5.0	150/667	45/200	15,5	23
760012112	R-012-DS-5K-FSUAQ	12	0.23/5.95	3.5/8.9	2.3/5.9	150/667	45/200	22	32
760018564	R-024-DS-5K-FSUAQ	24	0.31/7.9	5.0/12.7	3.3/8.5	300/1335	90/400	33,9	50,4
700208143	R-006-DS-5L-FSUAQ	6	0.2/5.04	3.0/7.6	2.0/5.0	150/667	45/200	15,5	23
700208150	R-012-DS-5L-FSUAQ	12	0.23/5.95	3.5/8.9	2.3/5.9	150/667	45/200	22	32
760018556	R-024-DS-5L-FSUAQ	24	0.31/7.9	5.0/12.7	3.3/8.5	300/1335	90/400	33,9	50,4
700203078	R-006-DS-5M-FSUAQ	6	0.2/5.04	3.0/7.6	2.0/5.0	150/667	45/200	15,5	23
760004424	R-006-DS-8W-FSUYL	6	0.2/5.04	3.0/7.6	2.0/5.0	150/667	45/200	15,5	23
760004440	R-012-DS-8W-FSUYL	12	0.23/5.95	3.5/8.9	2.3/5.9	150/667	45/200	22	32
760018515	R-024-DS-8W-FSUYL	24	0.31/7.9	5.0/12.7	3.3/8.5	300/1335	90/400	33,9	50,4

Plenum Single Unit Distribution Cables



Material ID	Product number	Fiber Count	Outer Diameter inch/mm	Min. Bend Radius		Max. Tensile Load		Weight	
				Loaded inch/cm	Unloaded inch/cm	Short Term lbs./Newton	Long Term lbs./Newton	lbs./1000'	kg./1000'
760024554	P-048-DS-5K-FMUAQ	48	0.59/14.91	8.8/22.4	5.9/14.9	300/1335	90/400	138	205
760024562	P-072-DS-5K-FMUAQ	72	0.75/18.96	11.2/28.4	7.5/19.0	300/1335	90/400	237	353
760024869	P-144-DS-5K-FMUAQ	144	0.96/24.41	14.4/36.6	9.6/24.4	300/1335	90/400	357	531
700211147	P-048-DS-5L-FMUAQ	48	0.59/14.91	8.8/22.4	5.9/14.9	300/1335	90/400	138	205
700211154	P-072-DS-5L-FMUAQ	72	0.75/18.96	11.2/28.4	7.5/19.0	300/1335	90/400	237	353
760018879	P-144-DS-5L-FMUAQ	144	0.96/24.41	14.4/36.6	9.6/24.4	300/1335	90/400	357	531
760004382	P-048-DS-8W-FMUYL	48	0.59/14.91	8.8/22.4	5.9/14.9	300/1335	90/400	138	205
760004390	P-072-DS-8W-FMUYL	72	0.75/18.96	11.2/28.4	7.5/19.0	300/1335	90/400	237	353
760018895	P-144-DS-8W-FMUYL	144	0.96/24.41	14.4/36.6	9.6/24.4	300/1335	90/400	357	531

Riser Single Unit Distribution Cables

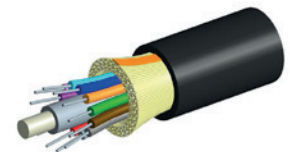
Material ID	Product number	Fiber Count	Outer Diameter inch/mm	Min. Bend Radius		Max. Tensile Load		Weight	
				Loaded inch/cm	Unloaded inch/cm	Short Term lbs./Newton	Long Term lbs./Newton	lbs./1000'	kg./1000'
760026849	R-048-DS-5K-FMUAQ	48	0.63/15.92	8.8/22.4	5.9/14.9	300/1335	90/400	142	212
760026856	R-072-DS-5K-FMUAQ	72	0.78/19.88	11.7/29.8	7.8/19.9	300/1335	90/400	232	345
760026872	R-144-DS-5K-FMUAQ	144	1.01/25.75	15.2/38.6	10.1/25.7	300/1335	90/400	351	522
700208218	R-048-DS-5L-FMUAQ	48	0.63/15.92	8.8/22.4	5.9/14.9	300/1335	90/400	142	212
700208226	R-072-DS-5L-FMUAQ	72	0.78/19.88	11.7/29.8	7.8/19.9	300/1335	90/400	232	345
760018861	R-144-DS-5L-FMUAQ	144	1.01/25.75	15.2/38.6	10.1/25.7	300/1335	90/400	351	522
760004473	R-048-DS-8W-FMUYL	48	0.63/15.92	8.8/22.4	5.9/14.9	300/1335	90/400	142	212
760004481	R-072-DS-8W-FMUYL	72	0.78/19.88	11.7/29.8	7.8/19.9	300/1335	90/400	232	345
760018887	R-144-DS-8W-FMUYL	144	1.01/25.75	15.2/38.6	10.1/25.7	300/1335	90/400	351	522



Gel-free Stranded Loose Tube Riser Cables

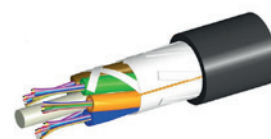
Material ID	Product number	Fiber Count	Outer Diameter inch/mm	Min. Bend Radius		Max. Tensile Load		Weight	
				Loaded inch/cm	Unloaded inch/cm	Short Term lbs./Newton	Long Term lbs./Newton	lbs./1000'	kg./1000'
760101295	R-012-LN-5K-F12BK/25D	12	0.45/11.5	6.8/17.3	4.5/11.5	607/2700	180/800	79	118
760101303	R-024-LN-5K-F12BK/25D	24	0.45/11.5	6.8/17.3	4.5/11.5	607/2700	180/800	79	118
760101329	R-072-LN-5K-F12BK/25D	72	0.47/11.9	9.4/23.9	3.7/9.4	607/2700	180/800	85	127
760128199	R-288-LN-5K-F12BK/25D	288	0.8/20.20	11.9/30.2	8.0/20.2	607/2700	180/800	208	309
760086413	R-024-LN-5L-F12BK/25D	24	0.45/11.5	6.8/17.3	4.5/11.5	607/2700	180/800	79	118
760086355	R-006-LN-8W-F06BK/25D	6	0.45/11.5	6.8/17.3	4.5/11.5	607/2700	180/800	79	118
760086371	R-012-LN-8W-F12BK/25D	12	0.45/11.5	6.8/17.3	4.5/11.5	607/2700	180/800	79	118
760086405	R-024-LN-8W-F12BK/25D	24	0.45/11.5	6.8/17.3	4.5/11.5	607/2700	180/800	79	118
760086470	R-048-LN-8W-F12BK/25D	48	0.45/11.5	6.8/17.3	4.5/11.5	607/2700	180/800	79	118
760086538	R-072-LN-8W-F12BK/25D	72	0.47/11.9	9.4/23.9	3.7/9.4	607/2700	180/800	85	127
760086652	R-144-LN-8W-F12BK/25D	144	0.8/20.20	11.9/30.2	8.0/20.2	607/2700	180/800	208	309
760086710	R-288-LN-8W-F12BK/25D	288	0.8/20.20	11.9/30.2	8.0/20.2	607/2700	180/800	208	309

* Crush Resistance



Indoor/Outdoor Tight Buffer LSZH/ Riser Cables

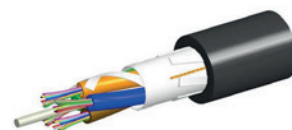
Material ID	Product number	Fiber Count	Outer Diameter inch/mm	Min. Bend Radius		Max. Tensile Load		Weight	
				Loaded inch/cm	Unloaded inch/cm	Short Term lbs./Newton	Long Term lbs./Newton	lbs./1000'	kg./1000'
760039966	Z-006-DS-5L-FSUBK	6	0.22/5.50	3.3/8.3	2.2/5.5	300/1335	90/400	17,5	26
700210982	Z-012-DS-5L-FSUBK	12	0.28/7.2	4.3/10.8	2.8/7.2	400/1780	120/534	33	49
760070292	Z-024-DS-5L-FSUBK	24	0.34/8.7	5.1/13	3.4/8.7	300/1335	90/400	45	67
760039974	Z-006-DS-5K-FSUBK	6	0.22/5.50	3.3/8.3	2.2/5.5	300/1335	90/400	17,5	26
760006650	Z-012-DS-5K-FSUBK	12	0.28/7.2	4.3/10.8	2.8/7.2	400/1780	120/534	33	49
760070300	Z-024-DS-5K-FSUBK	24	0.34/8.7	5.1/13	3.4/8.7	300/1335	90/400	45	67
760009753	Z-006-DS-8W-FSUBK	6	0.22/5.50	3.3/8.3	2.2/5.5	300/1335	90/400	17,5	26
760004184	Z-012-DS-8W-FSUBK	12	0.28/7.2	4.3/10.8	2.8/7.2	400/1780	120/534	33	49
760070276	Z-024-DS-8W-FSUBK	24	0.34/8.7	5.1/13	3.4/8.7	300/1335	90/400	45	67



Gel-free Stranded Loose Tube Riser Cables

Material ID	Product number	Fiber Count	Outer Diameter inch/mm	Min. Bend Radius		Max. Tensile Load		Weight	
				Loaded inch/cm	Unloaded inch/cm	Short Term lbs./Newton	Long Term lbs./Newton	lbs./1000'	kg./1000'
760107805	P-012-LN-5K-F12BK/25D	12	0.38/9.7	7.6/19.4	3.8/9.7	607/2700	180/800*	62	93
760103531	P-048-LN-5K-F12BK/25D	48	0.38/9.7	7.6/19.4	3.8/9.7	607/2700	180/800*	62	92
760105536	P-072-LN-5K-F12BK/25D	72	0.40/10.1	6.0/15.2	4.0/10.1	607/2700	180/800*	71	105
760094912	P-012-LN-5L-F12BK/25D	12	0.38/9.7	5.7/14.6	3.8/9.7	607/2700	180/800*	62	92
760094953	P-024-LN-5L-F12BK/25D	24	0.38/9.7	5.7/14.6	3.8/9.7	607/2700	180/800*	62	92
760094995	P-048-LN-5L-F12BK/25D	48	0.38/9.7	7.6/19.4	3.8/9.7	607/2700	180/800*	62	92
760095026	P-072-LN-5L-F12BK/25D	72	0.40/10.1	6.0/15.2	4.0/10.1	607/2700	180/800*	71	105
760095083	P-144-LN-5L-F12BK/25D	144	.60/15.3	12.0/30.6	6.0/15.3	607/2700	180/800*	166	247
760094888	P-012-LN-8W-F12BK/25D	12	0.38/9.7	5.7/14.6	3.8/9.7	607/2700	180/800*	62	92
760094920	P-024-LN-8W-F12BK/25D	24	0.38/9.7	5.7/14.6	3.8/9.7	607/2700	180/800*	62	92
760094961	P-048-LN-8W-F12BK/25D	48	0.38/9.7	7.6/19.4	3.8/9.7	607/2700	180/800*	62	92
760095000	P-072-LN-8W-F12BK/25D	72	0.40/10.1	6.0/15.2	4.0/10.1	607/2700	180/800*	71	105
760095067	P-144-LN-8W-F12BK/25D	144	.60/15.3	12.0/30.6	6.0/15.3	607/2700	180/800*	166	247

* Crush Resistance



Light Duty Riser Indoor/Outdoor Cables

Material ID	Product number	Fiber Count	Outer Diameter inch/mm	Min. Bend Radius		Installation Load lbs./Newton	Weight	
				Loaded inch/cm	Unloaded inch/cm		lbs./1000'	kg./1000'
760112649	R-002-LN-5K-F02BK/25D/LTS	2	0.41/10.4	6.2/15.7	10.4/4.1	300/1335	63	94
760112656	R-006-LN-5K-F02BK/25D/LTS	6	0.41/10.4	6.2/15.7	10.4/4.1	300/1335	63	94
760112664	R-012-LN-5K-F02BK/25D/LTS	12	0.41/10.4	6.2/15.7	10.4/4.1	300/1335	63	94
760112672	R-024-LN-5K-F02BK/25D/LTS	24	0.41/10.4	6.2/15.7	10.4/4.1	300/1335	63	94
760112680	R-036-LN-5K-F02BK/25D/LTS	36	0.41/10.4	6.2/15.7	10.4/4.1	300/1335	63	94
760112698	R-048-LN-5K-F02BK/25D/LTS	48	0.41/10.4	6.2/15.7	10.4/4.1	300/1335	63	94
760112581	R-002-LN-5L-F02BK/25D/LTS	2	0.41/10.4	6.2/15.7	10.4/4.1	300/1335	63	94
760112599	R-006-LN-5L-F02BK/25D/LTS	6	0.41/10.4	6.2/15.7	10.4/4.1	300/1335	63	94
760112607	R-012-LN-5L-F02BK/25D/LTS	12	0.41/10.4	6.2/15.7	10.4/4.1	300/1335	63	94
760112615	R-024-LN-5L-F02BK/25D/LTS	24	0.41/10.4	6.2/15.7	10.4/4.1	300/1335	63	94
760112623	R-036-LN-5L-F02BK/25D/LTS	36	0.41/10.4	6.2/15.7	10.4/4.1	300/1335	63	94
760112631	R-048-LN-5L-F02BK/25D/LTS	48	0.41/10.4	6.2/15.7	10.4/4.1	300/1335	63	94

All Dry Outside Stranded Loose Tube Non-Armored All Dielectric Gel-free Buffer Tube Cables



Material ID	Product number	Fiber Count	Outer Diameter inch/mm	Min. Bend Radius		Max. Tensile Load lbs./1000'	Weight	
				Loaded inch/cm	Unloaded inch/cm		lbs./1000'	kg./1000'
760054270	D-006-LN-5K-F06NS	6	0.40/10.2	6.0/15.3	4.0/10.2	607/2700	42	63
760054288	D-012-LN-5K-F12NS	12	0.40/10.2	6.0/15.3	4.0/10.2	607/2700	42	63
760054296	D-024-LN-5K-F12NS	24	0.40/10.2	6.0/15.3	4.0/10.2	607/2700	42	63
760054312	D-048-LN-5K-F12NS	48	0.40/10.2	6.0/15.3	4.0/10.2	607/2700	42	63
760054338	D-072-LN-5K-F12NS	72	0.40/10.2	6.0/15.3	4.0/10.2	607/2700	42	63
760054163	D-006-LN-5L-F06NS	6	0.40/10.2	6.0/15.3	4.0/10.2	607/2700	42	63
760054171	D-012-LN-5L-F12NS	12	0.40/10.2	6.0/15.3	4.0/10.2	607/2700	42	63
760054189	D-024-LN-5L-F12NS	24	0.40/10.2	6.0/15.3	4.0/10.2	607/2700	42	63
760054205	D-048-LN-5L-F12NS	48	0.40/10.2	6.0/15.3	4.0/10.2	607/2700	42	63
760054221	D-072-LN-5L-F12NS	72	0.40/10.2	6.0/15.3	4.0/10.2	607/2700	42	63
760053835	D-006-LN-8W-F06NS	6	0.40/10.2	6.0/15.3	4.0/10.2	607/2700	42	63
760053843	D-012-LN-8W-F12NS	12	0.40/10.2	6.0/15.3	4.0/10.2	607/2700	42	63
760053850	D-024-LN-8W-F12NS	24	0.40/10.2	6.0/15.3	4.0/10.2	607/2700	42	63
760053876	D-048-LN-8W-F12NS	48	0.40/10.2	6.0/15.3	4.0/10.2	607/2700	42	63
760053892	D-072-LN-8W-F12NS	72	0.40/10.2	6.0/15.3	4.0/10.2	607/2700	42	63
760053918	D-144-LN-8W-F12NS	144	0.62/15.7	9.3/23.6	6.2/15.7	607/2700	103	153
760053926	D-288-LN-8W-F12NS	288	0.72/18.2	10.7/27.3	7.2/18.2	607/2700	122	182

All Dry Outside Stranded Loose Tube Armored Gel-free Buffer Tube Cables



Material ID	Product number	Fiber Count	Outer Diameter inch/mm	Min. Bend Radius		Max. Tensile Load lbs./1000'	Weight	
				Loaded inch/cm	Unloaded inch/cm		lbs./1000'	kg./1000'
760053728	D-006-LA-5K-F06NS	6	0.45/11.5	6.8/17.3	4.5/11.5	607/2700	74	110
760053736	D-012-LA-5K-F12NS	12	0.45/11.5	6.8/17.3	4.5/11.5	607/2700	74	110
760053744	D-024-LA-5K-F12NS	24	0.45/11.5	6.8/17.3	4.5/11.5	607/2700	74	110
760053769	D-048-LA-5K-F12NS	48	0.45/11.5	6.8/17.3	4.5/11.5	607/2700	74	110
760053785	D-072-LA-5K-F12NS	72	0.45/11.5	6.8/17.3	4.5/11.5	607/2700	74	110
760053611	D-006-LA-5L-F06NS	6	0.45/11.5	6.8/17.3	4.5/11.5	607/2700	74	110
760053629	D-012-LA-5L-F12NS	12	0.45/11.5	6.8/17.3	4.5/11.5	607/2700	74	110
760053637	D-024-LA-5L-F12NS	24	0.45/11.5	6.8/17.3	4.5/11.5	607/2700	74	110
760053652	D-048-LA-5L-F12NS	48	0.45/11.5	6.8/17.3	4.5/11.5	607/2700	74	110
760053678	D-072-LA-5L-F12NS	72	0.45/11.5	6.8/17.3	4.5/11.5	607/2700	74	110
760053272	D-006-LA-8W-F06NS	6	0.45/11.5	6.8/17.3	4.5/11.5	607/2700	74	110
760053280	D-012-LA-8W-F12NS	12	0.45/11.5	6.8/17.3	4.5/11.5	607/2700	74	110
760053298	D-024-LA-8W-F12NS	24	0.45/11.5	6.8/17.3	4.5/11.5	607/2700	74	110
760053314	D-048-LA-8W-F12NS	48	0.45/11.5	6.8/17.3	4.5/11.5	607/2700	74	110
760053330	D-072-LA-8W-F12NS	72	0.45/11.5	6.8/17.3	4.5/11.5	607/2700	74	110
760053355	D-144-LA-8W-F12NS	144	0.67/17.1	10.1/25.7	6.7/17.1	607/2700	157	234
760053363	D-288-LA-8W-F12NS	288	0.77/19.6	11.6/29.4	7.7/19.6	607/2700	181	269



Fiber optic panels and wall enclosures

Material ID	Product number	Description
760231449	SD-1U	SD 1U sliding fiber panel, accepts (3) SD splice cassettes, ReadyPATCH MPO-LC modules, or ReadyPATCH adapter panels, providing up to 36 duplex LC ports or up to 24 MPO ports
760231456	SD-2U	SD 2U sliding fiber panel, accepts (6) SD splice cassettes, ReadyPATCH MPO-LC modules, or ReadyPATCH adapter panels, providing up to 72 duplex LC ports or up to 48 MPO ports
760231464	SD-4U	SD 4U sliding fiber panel, accepts (12) SD splice cassettes, ReadyPATCH MPO-LC modules, or ReadyPATCH adapter panels, providing up to 144 duplex LC ports or up to 96 MPO ports
760231472	SD-1U-FX	SD 1U fixed fiber panel, accepts (3) SD splice cassettes, ReadyPATCH MPO-LC modules, or ReadyPATCH adapter panels, providing up to 36 duplex LC ports or up to 24 MPO ports
760231480	SD-2U-FX	SD 2U fixed fiber panel, accepts (6) SD splice cassettes, ReadyPATCH MPO-LC modules, or ReadyPATCH adapter panels, providing up to 72 duplex LC ports or up to 48 MPO ports
760231498	SD-4U-FX	SD 4U fixed fiber panel, accepts (12) SD splice cassettes, ReadyPATCH MPO-LC modules, or ReadyPATCH adapter panels, providing up to 144 duplex LC ports or up to 96 MPO ports
760172288	WBE-EMT-BK/1P-PNL	Wall mount building enclosure, 1P, black, accepts one PNL-type adapter if splicing, accepts one ReadyPATCH module, accepts one splice tray, accepts two PNL-type adapters if using pre-terminated cable
760147496	WBE-EMT-BK/2P-PNL	Wall mount building enclosure, 2P, black, accepts Splice Wallet with splice trays, accepts two adapter panels or ReadyPATCH modules
760147504	WBE-EMT-BK/4P-PNL	Wall mount building enclosure, 4P, black, accepts four adapter panels or ReadyPATCH modules, accepts splice wallet with splice trays
760147512	WBE-EMT-BK/8P-PNL	Wall mount building enclosure, 8P, black, accepts eight adapter panels or ReadyPATCH modules, accepts splice wallet with splice trays



Pre-terminated modules

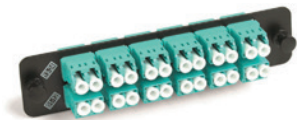
Material ID	Product number	Description
760167866	RP-MOD-012-LS-MPO-LC02	ReadyPATCH® standard module, 12 LC LazrSPEED®
760167874	RP-MOD-012-TS-MPO-LC02	ReadyPATCH® standard module, 12 LC TeraSPEED®
760167916	RP-MOD-024-LS-MPO-LC02	ReadyPATCH® standard module, 24 LC LazrSPEED®
760167924	RP-MOD-024-TS-MPO-LC02	ReadyPATCH® standard module, 24 LC TeraSPEED®

Splice cassettes



Material ID	Product number	Description
760221739	PNL-CS-12LCX-PT	Splicing cassette, 12 LC LazrSPEED®, 900µm
760221697	PNL-CS-24LCX-PT	Splicing cassette, 24 LC LazrSPEED®, 900µm
760221770	PNL-CS-12SCX-PT	Splicing cassette, 12 SC LazrSPEED®, 900µm
760221747	PNL-CS-12LCW-PT	Splicing cassette, 12 LC TeraSPEED®, 900µm
760221705	PNL-CS-24LCW-PT	Splicing cassette, 24 LC TeraSPEED®, 900µm
760221788	PNL-CS-12SCW-PT	Splicing cassette, 12 SC TeraSPEED®, 900µm
760236500	PNL-CS-12LCX	Splicing cassette, 12 LC LazrSPEED®, no pigtail
760236501	PNL-CS-12LCW	Splicing cassette, 12 LC TeraSPEED®, no pigtail
760236502	PNL-CS-12LAW	Splicing cassette, 12 LC APC TeraSPEED®, no pigtail
760236503	PNL-CS-24LCX	Splicing cassette, 24 LC LazrSPEED®, no pigtail
760236504	PNL-CS-24LCW	Splicing cassette, 24 LC TeraSPEED®, no pigtail
760236505	PNL-CS-24LAW	Splicing cassette, 24 LC APC TeraSPEED®, no pigtail
760236506	PNL-CS-12SCX	Splicing cassette, 12 SC LazrSPEED®, no pigtail
760236507	PNL-CS-12SCW	Splicing cassette, 12 SC TeraSPEED®, no pigtail
760236508	PNL-CS-12SAW	Splicing cassette, 12 SC APC TeraSPEED®, no pigtail

Adapter panels for 1U, 2U and 4U shelves



Material ID	Product number	Description
760148171	PNL-BK-024-MFA-LC02-AQ-NS	LazrSPEED® LC, 24 fiber, aqua duplex adapter, black panel, no shutter
760148056	PNL-BK-012-MFA-LC12-AQ	LazrSPEED® LC, 12 fiber, aqua ganged adapter, black panel
760147975	PNL-BK-006-MFA-SC06-AQ	LazrSPEED® SC, 6 fiber, aqua ganged adapter, black panel
760066076	PNL-BK-012-MFA-SC02-AQ	LazrSPEED® SC, 12 fiber, aqua duplex adapter, black panel
760148361	PNL-BK-024-SFA-LC02-BL-NS	TeraSPEED® LC, 24 fiber, blue duplex adapter, black panel, no shutter
760148254	PNL-BK-012-SFA-LC12-BL	TeraSPEED® LC, 12 fiber, blue ganged adapter, black panel
760147637	PNL-BK-012-AFA-LC12-GR	TeraSPEED® LC angled, 12 fiber, green ganged adapter, black panel
760147652	PNL-BK-006-AFA-SC06-GR	TeraSPEED® SC angled, 6 fiber, green ganged adapter, black panel
760027714	PNL-BK-012-SFA-SC02-BL	TeraSPEED® SC, 12 fiber, blue duplex adapters, black panel
760148213	PNL-BK-006-SFA-SC06-BL	TeraSPEED® SC, 6 fiber, blue ganged adapter, black panel
760148270	PNL-BK-006-SFA-SC01-BL	TeraSPEED® SC, 6 fiber, blue simplex adapters, black panel
760150094	PNL-BK-024-AFA-LC02-GR-NS	TeraSPEED® LC/APC, 24 fiber, green duplex adapter, black panel, no shutter
760117267	PNL-BK-012-AFA-SC02-GR	TeraSPEED® SC/APC, 12 fiber, green duplex adapter, black panel
760149344	PNL-BK-012-MFA-LC02-AQ-NS	LazrSPEED panel, 6 multimode duplex LC adapters, aqua, no shutter
760149351	PNL-BK-012-SFA-LC02-BL-NS	TeraSPEED panel, 6 singlemode duplex LC adapters, blue, no shutter
760149328	PNL-BK-012-AFA-LC02-GR-NS	TeraSPEED panel, 6 singlemode duplex LC/APC Adapters, green, no shutter
760015412	RFE-PNL-2-MPO	Adapter panel, black, 1000-type, with 2 12 fiber MPO adapters
760034280	RFE-PNL-6-MPO	Adapter panel, black, 1000-type, with 6 12 fiber MPO adapters
760056077	RFE-PNL-8-MPO	Adapter panel, black, 1000-type, with 8 12 fiber MPO adapters

Fiber solutions

MPO trunk configurator

Fiber connectivity



1 2 3 4 5 6 7 8 9 10 11 12 13 - 15
F G X M P M P A G - B F 050

Prefix

1	FG	Trunk plenum
2	FJ	Trunk LSZH Indoor/Outdoor
	F0	Rugged F/O plenum
	F2	Array plenum

Fiber type

3	X	LazrSPEED® 550 multimode
	Z	LazrSPEED® 300 multimode
	W	TeraSPEED® singlemode

Connector 1

4	MP	MPO female
5	MX	MPO male

Connector 2

6	MP	MPO female
	MX	MPO male
7	LC	LC
	LU	LC uniboot*

Cordage size

8	A	12-fiber PmP cable
	G	12-fiber PmP array cord

Fiber count

9	D	12 fiber
	F	24 fiber
	G	36 fiber
	H	48 fiber
	K	72 fiber
	L	96 fiber
	M	144 fiber

Gland

11	A	No gland
	B	With gland
	C	Pulling grip

Unit of measurement

12	F	Feet
	M	Meters

Length

13	10-999	Feet
15	3-999	Meters

Fiber solutions

Fiber Optic Patch Cords configurator

Fiber connectivity



1 2 3 4 5 6 7 8 9 10 11 12 13 14-16
F D X L 1 L 1 2 1 - A X F 010

Prefix

1	FD	Jumper - plenum
2	FE	Jumper - riser
	FF	Jumper - LSZH

Fiber type

3	X	LazrSPEED® 550 multimode
	W	TeraSPEED® singlemode

Connector 1

	LC	LC standard
	SC	SC standard
	LA	LC angled
	L1	LC keyed (Red)
	L2	LC keyed (Yellow)
4	L3	LC keyed (Blue)
	L4	LC keyed (Green)
5	L5	LC keyed (Orange)
	L6	LC keyed (Slate)
	L7	LC keyed (Brown)
	L8	LC keyed (Aqua)
	L9	LC keyed (Rose)
	LV	LC keyed (Violet)

Connector 2

	LC	LC standard
	SC	SC standard
	LA	LC angled
	L1	LC keyed (Red)
	L2	LC keyed (Yellow)
	L3	LC keyed (Blue)
6	L4	LC keyed (Green)
7	L5	LC keyed (Orange)
	L6	LC keyed (Slate)
	L7	LC keyed (Brown)
	L8	LC keyed (Aqua)
	L9	LC keyed (Rose)
	MJ	MTRJ

Cordage size

8	2	1.6 mm simplex
	4	1.6 mm zipcord

Fiber count

9	1	1 fiber
	2	2 fiber

Jacket color

	A	Blue
	B	Orange
	C	Green
	D	Brown
	E	Slate
11	G	Red
	H	Black
	J	Yellow
	K	Violet
	L	Rose
	M	Aqua

Breakout length

12	X	No breakout
----	---	-------------

Unit of measurement

13	F	Feet
	M	Meter

Length

14	2-999	Feet
16	1-999	Meters

Fiber solutions

Fiber optic pigtails configurator

Fiber connectivity



1 2 3 4 5 6 7 8 9 10 11 12 13 14-16
F A X L C U C 0 1 - M X F 002

Prefix

1	FA	Pigtail tight buffer
2	FB	Pigtail - riser SBJ
	FC	Pigtail - LSZH SBJ

Fiber type

3	X	LazrSPEED® 550 multimode
	W	TeraSPEED® singlemode

Connector 1

4 5	L1	LC keyed (Red)
	L2	LC keyed (Yellow)
	L3	LC keyed (Blue)
	L4	LC keyed (Green)
	L5	LC keyed (Orange)
	L6	LC keyed (Slate)
	L7	LC keyed (Brown)
	L8	LC keyed (Aqua)
	L9	LC keyed (Rose)
	L10	LC keyed (Violet)
	LA	LC angled
	LC	LC standard
	LU	LC uniboot*
	SA	SC angled
	SC	SC standard

Connector 2

6	UC	Unconnectorized
---	----	-----------------

Cordage size

8	0	0.9 mm (Tight buffered fiber BTW)
	1	0.9 mm (SBJ cordage)

Fiber count

9	1	1 fiber
	A	6 fiber pigtail kit BL-WH (1-6)
	B	6 fiber pigtail kit RD-AQ (7-12)
	C	12 fiber pigtail kit BL-AQ (1-12)

Jacket color

11	A	Blue
	B	Orange
	C	Green
	D	Brown
	E	Slate
	G	Red
	H	Black
	J	Yellow
	K	Violet
	L	Rose
	M	Aqua
X	Kit pigtail	

Breakout length

12	X	No breakout
----	---	-------------

Unit of measurement

13	F	Feet
	M	Meter

Length

14 - 16	2-23	Feet
	1-7	Meters

Fiber solutions

Fiber optic connectors

Standard fiber optic connectors



Material ID	Product number	Description
760034181	MFC-LCR-09	Multimode LC pre-radius connector for use on 900m buffered fiber, single pack
760034199	SFC-LCR-09	Singlemode LC pre-radius connector for use on 900m buffered fiber, single pack
760007070	MFC-SCR-09	Multimode SC connector for use on 900m buffered fiber, single pack
760007112	SFC-SCR-09	Singlemode SC connector for use on 900m buffered fiber, single pack

Fiber optic QWIK II Connectors®



Material ID	Product number	Description
760117887	MFC-LCF-09-5X	BTW (QWIK II-LC) connector, LS
760117895	SFC-LCF-09-8X	BTW (QWIK II-LC) connector, TS
760184697	SFC-LCF-09-8A-25-PACK	BTW (QWIK II-LC) connector, TS, 25 pack
760117945	MFC-SCF-09-5X	BTW (QWIK II-SC) connector, LS
760117952	SFC-SCF-09-8X	BTW (QWIK II-SC) connector, TS

Faceplates



Faceplates

Material ID	Description	Color
1- 2111008 - 3	Faceplate Kit, labeled, 1-gang, 1 port	Alpine White
1- 2111009 - 3	Faceplate Kit, labeled, 1-gang, 2 port	Alpine White
1 - 2111010 -3	Faceplate Kit, labeled, 1-gang, 3 port	Alpine White
1- 2111011 - 3	Faceplate Kit, labeled, 1-gang, 4 port	Alpine White
1- 2111008 - 1	Faceplate Kit, labeled, 1-gang, 1 port	Electrical Ivory
1- 2111009 - 1	Faceplate Kit, labeled, 1-gang, 2port	Electrical Ivory
1- 2111010 - 1	Faceplate Kit, labeled, 1-gang, 3 port	Electrical Ivory
1- 2111011 - 1	Faceplate Kit, labeled, 1-gang, 4 port	Electrical Ivory
1-1116412 - 3	Blank Insert	Alpine White



19" Racks

Material ID	Product number	Description
760082479	RK3-45A	2-post aluminum rack, 3" channel, 7 ft (12-24 tapped rails)
760082487	RK3-52A	2-post aluminum rack, 3" channel, 8 ft (12-24 tapped rails)
760082495	RK6-45A	2-post aluminum rack, 6" channel, 7 ft (12-24 tapped rails)
760082503	RK6-52A	2-post aluminum rack, 6" channel, 8 ft (12-24 tapped rails)
760082511	RK12-45A	2-post aluminum rack, 12" channel, 7 ft (12-24 tapped rails)
760103010	RK3-17A	2-post aluminum rack, 3" channel, 3 ft (12-24 tapped rails)
760090118	RK3-45S	2-post steel rack, 3" channel, 7 ft (3/8 sq punched)
760090126	RK3-52S	2-post steel rack, 3" channel, 8 ft (3/8 sq punched)
760090134	RK6-45S	2-post steel rack, 6" channel, 7 ft (3/8 sq punched)
760090142	RK6-52S	2-post steel rack, 6" channel, 8 ft (3/8 sq punched)
760082529	RK4P45-29A	4-post aluminum rack, 29", 7 ft (12-24 tapped rails)
760082537	RK4P52-29A	4-post aluminum rack, 29", 8 ft (12-24 tapped rails)
760082560	RK4P45-36A	4-post aluminum rack, 36", 7 ft (12-24 tapped rails)
760082578	RK4P52-36A	4-post aluminum rack, 36", 8 ft (12-24 tapped rails)
760082545	RK4P45-29S	4-post steel rack, 29", 7 ft (3/8 sq punched)
760082552	RK4P52-29S	4-post steel rack, 29", 8 ft (3/8 sq punched)
760082586	RK4P45-36S	4-post steel rack, 36", 7 ft (3/8 sq punched)
760082594	RK4P52-36S	4-post steel rack, 36", 8 ft (3/8 sq punched)

Shelves

Material ID	Product number	Description
760162008	SHELF-19-2U-10	Cantilever Shelf, 19" x 2U x 10D, black
760162016	SHELF-19-2U-14	Cantilever Shelf, 19" x 2U x 14D, black
760162024	SHELF-DS-19-2U-19	Double Sided Shelf, 19" x 2U x 19D, black
760126032	SHELF-HD-DS-10-4U-26	Double Sided Heavy Duty Shelf, 19" x 2U x 26D, black
760162040	SHELF-ADJ-19-1U-24X36	Adjustable Shelf, 19" x 1U x 24-36D, black
760162057	SHELF-KEY-19-2U-8	Roll Out Keyboard Tray, 19" x 2U x 8D, black

Filler Panels

Material ID	Product number	Description
760162065	FPANEL-19-1U	Filler Panel, 1U x 19"
760162073	FPANEL-19-2U	Filler Panel, 2U x 19"
760162081	FPANEL-19-3U	Filler Panel, 3U x 19"

Cable Management

Horizontal Cable Management

Material ID	Product number	Description
760072942	HTK-19-SS-1U	1U 19" Single Sided Horizontal Trough Kit
760072959	HTK-19-SS-2U	2U 19" Single Sided Horizontal Trough Kit
760072967	HTK-19-SS-3U	3U 19" Single Sided Horizontal Trough Kit
760128843	HTK-19-DS-1U	1U 19" Double Sided Horizontal Trough Kit
760128850	HTK-19-DS-2U	2U 19" Double Sided Horizontal Trough Kit
760128868	HTK-19-DS-3U	3U 19" Double Sided Horizontal Trough Kit



Vertical Cable Management

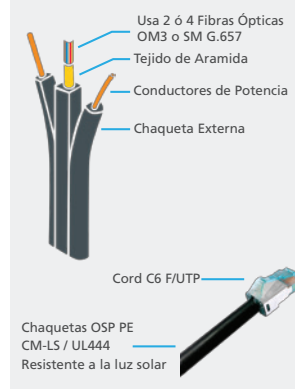
Material ID	Product number	Description
760089342	VCM-DS-84-6B	Double Sided 6 X 84 VCM, black doors
760089359	VCM-DS-84-8B	Double Sided 8 X 84 VCM, black doors
760089367	VCM-DS-84-10B	Double Sided 10 X 84 VCM, black doors
760089375	VCM-DS-84-12B	Double Sided 12 X 84 VCM, black doors
760089425	VCM-SS-84-6B	Single Sided 6 X 84 VCM, black doors
760089433	VCM-SS-84-8B	Single Sided 8 X 84 VCM, black doors
760089441	VCM-SS-84-10B	Single Sided 10 X 84 VCM, black doors
760089458	VCM-SS-84-12B	Single Sided 12 X 84 VCM, black doors
760072785	VCM-DS-84-6	Double Sided 6 X 84 VCM, silver doors
760072793	VCM-DS-84-8	Double Sided 8 X 84 VCM, silver doors
760072801	VCM-DS-84-10	Double Sided 10 X 84 VCM, silver doors
760072819	VCM-DS-84-12	Double Sided 12 X 84 VCM, silver doors
760072868	VCM-SS-84-6	Single Sided 6 X 84 VCM, silver doors
760072876	VCM-SS-84-8	Single Sided 8 X 84 VCM, silver doors
760072884	VCM-SS-84-10	Single Sided 10 X 84 VCM, silver doors
760072892	VCM-SS-84-12	Single Sided 12 X 84 VCM, silver doors



Powered Fiber Cable

Product Description	Part Number
PoE Extender White with Aruba Bracket	PFU-P-A-O-030-01
PoE Extender White with Wall/Pole Mounting Bracket	PFU-P-B-O-030-01
2-Port PoE Extender 2x30W	PFU-P-C-O-060-02
1-Port PoE Extender 1x60W	PFU-P-C-O-060-01
Patch Cord C6A OSP F/UTP	PCOSP-65-BK-XXXXM
<i>Note: available in 2 meter increments from 2 to 100m</i>	
PFC, Singlemode, 2F, Outdoor, 12AWG	PFC-502O12-XXXXM
PFC, Singlemode, 2F, Outdoor, 16AWG	PFC-502O16-XXXXM
PFC, Singlemode, 4F, Outdoor, 12AWG	PFC-504O12-XXXXM
PFC, Singlemode, 4F, Outdoor, 16AWG	PFC-504O16-XXXXM
PFC, OM3, 2F, Outdoor, 12AWG	PFC-302O12-XXXXM
PFC, OM3, 2F, Outdoor, 16AWG	PFC-302O16-XXXXM
PFC, OM3, 4F, Outdoor, 12AWG	PFC-304O12-XXXXM
PFC, OM3, 4F, Outdoor, 16AWG	PFC-304O16-XXXXM
<i>Note: 500 meter MOQ, Customers order per meter up to 8000m</i>	
PFC, Singlemode, 2F, IN/OUT, 12AWG	PFC-502L12-XXXXM
PFC, Singlemode, 2F, IN/OUT, 16AWG	PFC-502L16-XXXXM
PFC, Singlemode, 4F, IN/OUT, 12AWG	PFC-504L12-XXXXM
PFC, Singlemode, 4F, IN/OUT, 16AWG	PFC-504L16-XXXXM
PFC, OM3, 2F, IN/OUT, 12AWG	PFC-302L12-XXXXM
PFC, OM3, 2F, IN/OUT, 16AWG	PFC-302L16-XXXXM
PFC, OM3, 4F, IN/OUT, 12AWG	PFC-304L12-XXXXM
PFC, OM3, 4F, IN/OUT, 16AWG	PFC-304L16-XXXXM
<i>Note: 500 meter MOQ, Customers order per meter up to 8000m</i>	

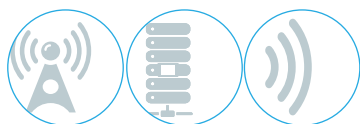
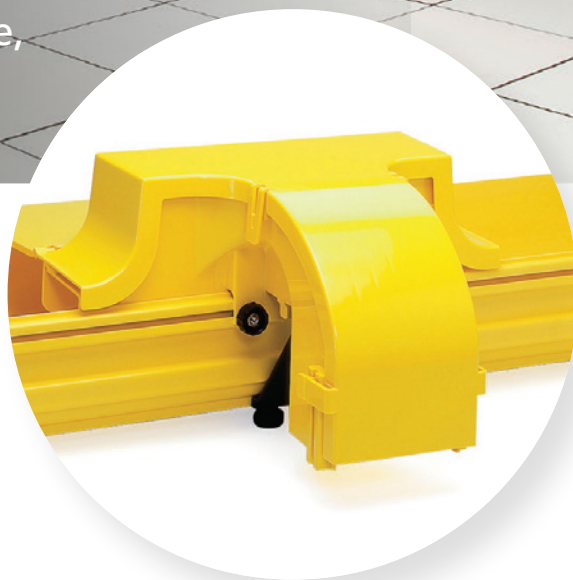
Hybrid Cable



El Sistema de Canalización Flexible para Centros de Datos Más Completo de la Industria

El cableado de fibra óptica ofrece un ancho de banda mucho mayor que el cableado tradicional de cobre. Pero si este cableado sufre algún daño, incluso en una sola fibra, pueden ocurrir fallas que, potencialmente, pueden resultar sumamente costosos.

La Solución FiberGuide® de CommScope es un sistema de canalizaciones simple y robusto diseñado para proporcionar la máxima protección y facilidad de instalación para su red. Es una solución flexible de distribución que proporciona una vía especializada para el tendido de cableado de fibra en centros de datos que se encuentren saturados, al tiempo que lo protege asegurando condiciones adecuadas de instalación.



CommScope® Enterprise Networks – Oficinas Regionales CALA

CommScope® (NASDAQ: COMM) ayuda a las empresas alrededor del mundo a diseñar, desarrollar y gestionar redes cableadas e inalámbricas. Nuestras soluciones de infraestructura de redes ayudan a los clientes a aumentar el ancho de banda, maximizar sus capacidades existentes, mejorar el rendimiento y la disponibilidad de la red, incrementar la eficiencia energética y simplificar la migración hacia nuevas tecnologías. Encontrará nuestras soluciones en los edificios más grandes, en espacios cerrados y al aire libre; en data centers y edificaciones de todos los tamaños, formas y complejidades; en sitios de celdas celulares y en sistemas de cabecera de cable; y en aeropuertos, trenes y túneles.

Las redes vitales alrededor del mundo funcionan con base en soluciones CommScope®

Todos se comunican. Eso es la esencia de la experiencia humana. La forma de comunicarnos está evolucionando.

La tecnología está transformando la forma en que vivimos, aprendemos y prosperamos. El epicentro de esta transformación es la red – nuestra pasión.

Nuestros expertos están repensando el propósito, papel y utilidad de las redes

para ayudar a nuestros clientes a incrementar el ancho de banda, expandir

la capacidad, mejorar la eficiencia, desplegar la velocidad y simplificar la

migración. Desde sitios remotos de celulares hasta estadios

deportivos multitudinarios, desde aeropuertos saturados hasta

centros de datos de vanguardia – nosotros proveemos la

experiencia esencial e infraestructura vital que tu negocio

necesita para tener éxito. Las redes más avanzadas del

mundo confían en la conectividad de CommScope.

Todos los productos CommScope®
tienen garantía de 25 años



COMMScope®

www.commscope.com/Product-Catalog/New-to-CommScope

2017 CommScope, Inc. Todos los derechos reservados.
Todas las marcas identificadas por ® o ™ y marcas registradas,
respectivamente, de CommScope, Inc.

Sólo para propósitos de planeación. CommScope se reserve el derecho
para modificar las especificaciones o producto sin notificar.

Este documento no pretende modificar o complementar
especificaciones o garantías relacionadas a productos o servicios de
CommScope.



CommScope

35th Floor, Tower Financial Center, Financial District

Panama, Panama

Phone: + 507 297-4713

mobile: + 507 6400 - 0540

Costa Rica

+506 8815-3665

www.commscope.com