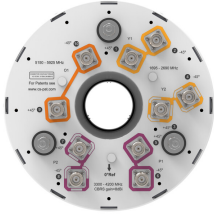


VVSSP-360S-D



10-port small cell antenna, 4x 1695–2690, 4x 3300–4200 and 2x 5150–5925 MHz. 360° Horizontal Beamwidth, fix tilt

- Nominal 4 inch diameter through-hole for mid pipe mount
- Accommodates central pipe up to 3.5" OD

General Specifications

Antenna Type	Small Cell
Band	Multiband
Grounding Type	RF connector inner conductor and body grounded to reflector and mounting bracket
Performance Note	Outdoor usage
Radome Material	ASA
Radiator Material	Aluminum Low loss circuit board
Reflector Material	Aluminum
RF Connector Interface	4.3-10 Female
RF Connector Location	Bottom
RF Connector Quantity, high band	10
RF Connector Quantity, total	10

Dimensions

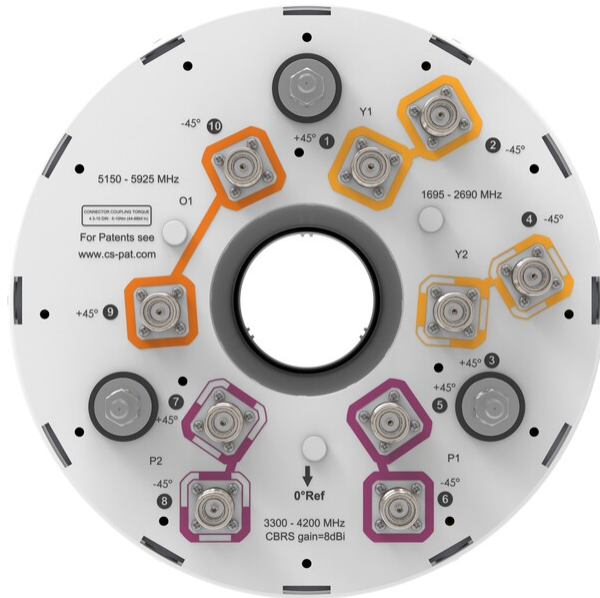
Length	618 mm 24.331 in
Net Weight, without mounting kit	10.6 kg 23.369 lb
Outer Diameter	305 mm 12.008 in

5 GHz Port Power Table

5 GHz FCC Power Requirements				
U-NII Band	U-NII 1	U-NII 2A	U-NII 2C	U-NII 3
Frequency (MHz)	5150 - 5250	5250 - 5350	5470 - 5725	5725 - 5850
Max Input power per port to align with FCC Title 47 Part 15 (Watts)	0.5	0.125	0.125	0.5

Port Configuration

VVSSP-360S-D



Electrical Specifications

Impedance	50 ohm
Operating Frequency Band	1695 – 2690 MHz 3300 – 4200 MHz 5150 – 5925 MHz
Polarization	±45°

Electrical Specifications

Frequency Band, MHz	1695–1880	1850–1990	1920–2180	2300–2690	3300–4200	5150–5925
Gain, dBi	8.1	8.4	8.7	8.5	8.9	3.7
Beamwidth, Horizontal, degrees	360	360	360	360	360	360
Beamwidth, Vertical, degrees	18	17.1	16.2	15.4	31.5	22.4
Beam Tilt, degrees	4	4	4	4	0	0
USLS (First Lobe), dB	17	13	12	12	7	4
Isolation, Cross Polarization, dB	25	25	25	25	25	25
Isolation, Inter-band, dB	25	25	25	25	25	25
VSWR Return loss, dB	1.5 14.0	1.5 14.0	1.5 14.0	1.5 14.0	1.5 14.0	1.5 14.0
PIM, 3rd Order, 2 x 20 W, dBc	-153	-153	-153	-153	-140	
Input Power per Port at 50°C, maximum, watts	75	75	75	75	50	5

VVSSP-360S-D

Electrical Specifications, BASTA

Frequency Band, MHz	1695–1880	1850–1990	1920–2180	2300–2690	3300–4200	5150–5925
Gain by all Beam Tilts, average, dBi	7.6	7.9	7.9	7.9	7.6	2.8
Gain by all Beam Tilts Tolerance, dB	±0.7	±0.6	±0.5	±0.5	±1.2	±1.1
Beamwidth, Vertical Tolerance, degrees	±5	±4.6	±3.9	±2.2	±5.2	±8.5

Mechanical Specifications

Effective Projective Area (EPA), frontal	0.1 m ² 1.076 ft ²
Effective Projective Area (EPA), lateral	0.1 m ² 1.076 ft ²
Wind Loading @ Velocity, frontal	102.0 N @ 150 km/h (22.9 lbf @ 150 km/h)
Wind Speed, maximum	241 km/h (150 mph)

Packaging and Weights

Width, packed	418 mm 16.457 in
Depth, packed	404 mm 15.906 in
Length, packed	888 mm 34.961 in
Weight, gross	14.5 kg 31.967 lb

Regulatory Compliance/Certifications

Agency	Classification
CHINA-ROHS	Above maximum concentration value
ISO 9001:2015	Designed, manufactured and/or distributed under this quality management system
REACH-SVHC	Compliant as per SVHC revision on www.commscope.com/ProductCompliance
ROHS	Compliant/Exempted
UK-ROHS	Compliant/Exempted



* Footnotes

Performance Note	Severe environmental conditions may degrade optimum performance
-------------------------	---