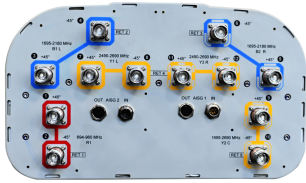


# RVHHTT-65A-R5



12-port sector antenna, 2x 694-960 (R1), 2x 1695-2690 (Y2), 4x 1695-2180 (B1-B2), 4x 2490-2690 (Y1&Y3) MHz, 65° HPBW, 5x RET. Y2 & Y3 share a common RET

- All Internal RET actuators are connected in “Cascaded SRET” configuration
- Supports re-configurable antenna sharing capability enabling control of the internal RET system using up to two separate RET compatible OEM radios

## General Specifications

<b>Antenna Type</b>	Sector
<b>Band</b>	Multiband
<b>Grounding Type</b>	RF connector inner conductor and body grounded to reflector and mounting bracket
<b>Performance Note</b>	Outdoor usage
<b>Radome Material</b>	Fiberglass, UV resistant
<b>Radiator Material</b>	Low loss circuit board
<b>Reflector Material</b>	Aluminum
<b>RF Connector Interface</b>	4.3-10 Female
<b>RF Connector Location</b>	Bottom
<b>RF Connector Quantity, high band</b>	10
<b>RF Connector Quantity, low band</b>	2
<b>RF Connector Quantity, total</b>	12

## Remote Electrical Tilt (RET) Information

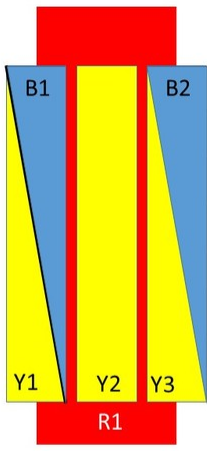
<b>RET Hardware</b>	CommRET v2
<b>RET Interface</b>	8-pin DIN Female   8-pin DIN Male
<b>RET Interface, quantity</b>	2 female   2 male
<b>Input Voltage</b>	10–30 Vdc
<b>Internal RET</b>	High band (4)   Low band (1)
<b>Power Consumption, idle state, maximum</b>	1 W
<b>Power Consumption, normal conditions, maximum</b>	8 W
<b>Protocol</b>	3GPP/AISG 2.0 (Single RET)

# RVHHTT-65A-R5

## Dimensions

<b>Width</b>	395 mm   15.551 in
<b>Depth</b>	228 mm   8.976 in
<b>Length</b>	1500 mm   59.055 in
<b>Net Weight, without mounting kit</b>	24 kg   52.911 lb

## Array Layout



Left  
Bottom

Array	Freq (MHz)	Conns	RET (SRET)	AISG RET UID
R1	694-960	1-2	1	CPxxxxxxxxxxxxxxxxR1
B1	1695-2180	3-4	2	CPxxxxxxxxxxxxxxxxB1
B2	1695-2180	5-6	3	CPxxxxxxxxxxxxxxxxB2
Y1	2490-2690	7-8	4	CPxxxxxxxxxxxxxxxxY1
Y3	2490-2690	11-12		
Y2	1695-2690	9-10	5	CPxxxxxxxxxxxxxxxxY1

(Sizes of colored boxes are not true depictions of array sizes)

## Port Configuration

# RVHHTT-65A-R5



## Electrical Specifications

<b>Impedance</b>	50 ohm
<b>Operating Frequency Band</b>	1695 – 2180 MHz   1695 – 2690 MHz   2490 – 2690 MHz   694 – 960 MHz
<b>Polarization</b>	±45°
<b>Total Input Power, maximum</b>	800 W @ 50 °C

## Electrical Specifications

	R1	R1	B1-B2	B1-B2	Y2	Y2	Y2	Y1&Y3
<b>Frequency Band, MHz</b>	<b>694–803</b>	<b>824–960</b>	<b>1695–1880</b>	<b>1920–2180</b>	<b>1695–1880</b>	<b>1920–2180</b>	<b>2490–2690</b>	<b>2490–2690</b>
<b>Gain, dBi</b>	14	14.6	16.7	17.3	16.6	17.9	17.4	17.3
<b>Beamwidth, Horizontal, degrees</b>	66	64	71	66	68	59	61	64
<b>Beamwidth, Vertical, degrees</b>	16.6	14.3	6.9	6.3	7.4	6.7	5.4	4.9
<b>Beam Tilt, degrees</b>	2–17	2–17	2–12	2–12	2–12	2–12	2–12	2–12
<b>USLS (First Lobe), dB</b>	15	17	18	17	16	16	17	16
<b>Front-to-Back Ratio at 180°, dB</b>	40	34	32	34	33	36	29	30
<b>Isolation, Cross Polarization, dB</b>	28	28	28	28	25	25	25	28

# RVHHTT-65A-R5

<b>Isolation, Inter-band, dB</b>	28	28	28	28	28	28	28	28
<b>VSWR   Return loss, dB</b>	1.5 14.0	1.5 14.0	1.5 14.0	1.5 14.0	1.5 14.0	1.5 14.0	1.5 14.0	1.5 14.0
<b>PIM, 3rd Order, 2 x 20 W, dBc</b>	-150	-150	-150	-150	-150	-150	-150	-150
<b>Input Power per Port at 50°C, maximum, watts</b>	300	300	250	250	250	250	200	150

## Electrical Specifications, BASTA

<b>Frequency Band, MHz</b>	<b>694–803</b>	<b>824–960</b>	<b>1695–1880</b>	<b>1920–2180</b>	<b>1695–1880</b>	<b>1920–2180</b>	<b>2490–2690</b>	<b>2490–2690</b>
<b>Gain by all Beam Tilts, average, dBi</b>	13.7	14.2	16.3	16.8	15.8	17.3	17	16.8
<b>Gain by all Beam Tilts Tolerance, dB</b>	±0.5	±0.5	±0.6	±0.6	±1.2	±0.7	±0.6	±0.7
<b>Gain by Beam Tilt, average, dBi</b>	2° 13.8 10° 13.9 17° 13.6	2° 14.3 10° 14.4 17° 13.9	2° 16.2 7° 16.6 12° 16.3	2° 16.6 7° 17.1 12° 16.7	2° 15.8 7° 16.0 12° 15.7	2° 17.2 7° 17.5 12° 17.2	2° 16.9 7° 17.2 12° 16.8	2° 16.6 7° 17.2 12° 16.7
<b>Beamwidth, Horizontal Tolerance, degrees</b>	±3.4	±2.4	±2.9	±5.6	±7.9	±8.8	±5.2	±7.3
<b>Beamwidth, Vertical Tolerance, degrees</b>	±1.3	±1.1	±0.4	±0.4	±0.5	±0.5	±0.3	±0.3
<b>USLS, beampeak to 20° above beampeak, dB</b>	13	16	14	16	13	14	14	14
<b>Front-to-Back Total Power at 180° ± 30°, dB</b>	28	25	23	25	28	29	24	23
<b>CPR at Boresight, dB</b>	16	16	21	22	19	23	21	21
<b>CPR at Sector, dB</b>	10	9	6	5	5	10	5	9

## Mechanical Specifications

<b>Effective Projective Area (EPA), frontal</b>	0.27 m <sup>2</sup>   2.906 ft <sup>2</sup>
<b>Effective Projective Area (EPA), lateral</b>	0.2 m <sup>2</sup>   2.153 ft <sup>2</sup>
<b>Mechanical Tilt Range</b>	0°–18°
<b>Wind Loading @ Velocity, frontal</b>	289.0 N @ 150 km/h (65.0 lbf @ 150 km/h)
<b>Wind Loading @ Velocity, lateral</b>	209.0 N @ 150 km/h (47.0 lbf @ 150 km/h)
<b>Wind Loading @ Velocity, maximum</b>	495.0 N @ 150 km/h (111.3 lbf @ 150 km/h)
<b>Wind Loading @ Velocity, rear</b>	297.0 N @ 150 km/h (66.8 lbf @ 150 km/h)
<b>Wind Speed, maximum</b>	241 km/h (150 mph)

## Packaging and Weights

<b>Width, packed</b>	505 mm   19.882 in
----------------------	--------------------

# RVHHTT-65A-R5

---

<b>Depth, packed</b>	386 mm   15.197 in
<b>Length, packed</b>	1643 mm   64.685 in
<b>Weight, gross</b>	39 kg   85.98 lb

## Regulatory Compliance/Certifications

<b>Agency</b>	<b>Classification</b>
CHINA-ROHS	Above maximum concentration value
ISO 9001:2015	Designed, manufactured and/or distributed under this quality management system
ROHS	Compliant/Exempted
UK-ROHS	Compliant/Exempted



## Included Products

- BSAMNT-3 – Wide Profile Antenna Downtilt Mounting Kit for 2.4 - 4.5 in (60 - 115 mm) OD round members. Kit contains one scissor top bracket set and one bottom bracket set.

## \* Footnotes

**Performance Note** Severe environmental conditions may degrade optimum performance

# BSAMNT-3



Wide Profile Antenna Downtilt Mounting Kit for 2.4 - 4.5 in (60 - 115 mm) OD round members. Kit contains one scissor top bracket set and one bottom bracket set.

## Product Classification

**Product Type** Downtilt mounting kit

## General Specifications

**Application** Outdoor

**Color** Silver

## Dimensions

**Compatible Diameter, maximum** 115 mm | 4.528 in

**Compatible Diameter, minimum** 60 mm | 2.362 in

**Weight, net** 6.2 kg | 13.669 lb

## Material Specifications

**Material Type** Galvanized steel

## Packaging and Weights

**Included** Brackets | Hardware

**Packaging quantity** 1

**Weight, gross** 6.4 kg | 14.11 lb

## Regulatory Compliance/Certifications

Agency	Classification
CE	Compliant with the relevant CE product directives
CHINA-ROHS	Below maximum concentration value
ISO 9001:2015	Designed, manufactured and/or distributed under this quality management system
REACH-SVHC	Compliant as per SVHC revision on <a href="http://www.commscope.com/ProductCompliance">www.commscope.com/ProductCompliance</a>
ROHS	Compliant
UK-ROHS	Compliant

# BSAMNT-3

---

