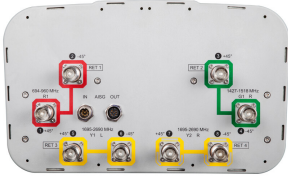


# RYVV-65B-R4



8-port sector antenna, 2x 694–960, 2x 1427-1518 and 4x 1695–2690 MHz, 65° HPBW, 4x RET

- Includes 2-Ports which support operation over 1427-1518 MHz (including 1400 MHz “L-Band” applications in Europe)
- All Internal RET actuators are connected in “Cascaded SRET” configuration
- Uses the 4.3-10 connector which is 40 percent smaller than the 7-16 DIN connector

## OBSOLETE

This product was discontinued on: March 30, 2024

## General Specifications

<b>Antenna Type</b>	Sector
<b>Band</b>	Multiband
<b>Grounding Type</b>	RF connector inner conductor and body grounded to reflector and mounting bracket
<b>Performance Note</b>	Outdoor usage
<b>Radome Material</b>	Fiberglass, UV resistant
<b>Reflector Material</b>	Aluminum
<b>RF Connector Interface</b>	4.3-10 Female
<b>RF Connector Location</b>	Bottom
<b>RF Connector Quantity, high band</b>	6
<b>RF Connector Quantity, low band</b>	2
<b>RF Connector Quantity, total</b>	8

## Remote Electrical Tilt (RET) Information

<b>RET Interface</b>	8-pin DIN Female   8-pin DIN Male
<b>RET Interface, quantity</b>	1 female   1 male
<b>Input Voltage</b>	10–30 Vdc
<b>Internal RET</b>	High band (3)   Low band (1)
<b>Power Consumption, idle state, maximum</b>	2 W
<b>Power Consumption, normal conditions, maximum</b>	13 W
<b>Protocol</b>	3GPP/AISG 2.0 (Single RET)

# RYVV-65B-R4

## Dimensions

<b>Width</b>	350 mm   13.78 in
<b>Depth</b>	208 mm   8.189 in
<b>Length</b>	1828 mm   71.969 in
<b>Net Weight, without mounting kit</b>	25 kg   55.115 lb

## Array Layout



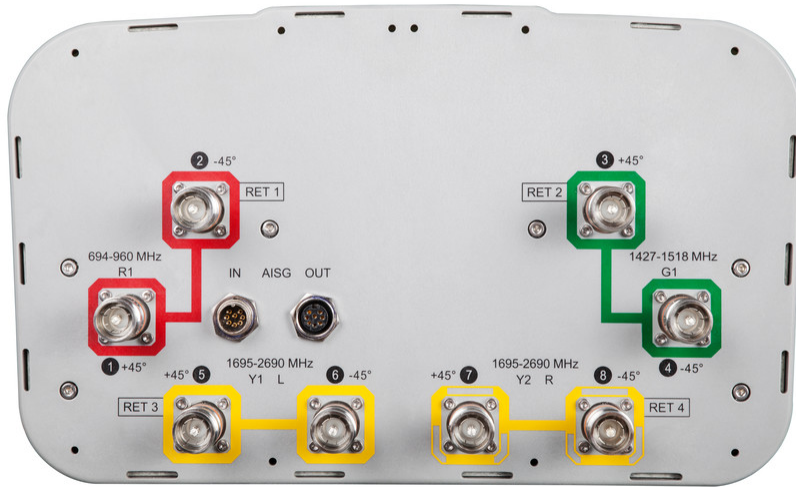
Array	Freq (MHz)	Conns	RET (SRET)	AISG RET UID
R1	694-960	1-2	1	ANxxxxxxxxxxxxxxxxx1
G1	1427-1518	3-4	2	ANxxxxxxxxxxxxxxxxx2
Y1	1695-2690	5-6	3	ANxxxxxxxxxxxxxxxxx3
Y2	1695-2690	7-8	4	ANxxxxxxxxxxxxxxxxx4

Left Bottom Right

(Sizes of colored boxes are not true depictions of array sizes)

## Port Configuration

# RYVV-65B-R4



## Electrical Specifications

<b>Impedance</b>	50 ohm
<b>Operating Frequency Band</b>	1427 – 1518 MHz   1695 – 2690 MHz   694 – 960 MHz
<b>Polarization</b>	±45°
<b>Total Input Power, maximum</b>	800 W @ 50 °C

## Electrical Specifications

Frequency Band, MHz	694–790	790–890	890–960	1427–1518	1695–1920	1920–2180	2300–2500	2500–2690
<b>Gain, dBi</b>	15.1	15.7	15.9	16	17.7	18.5	18.8	18.5
<b>Beamwidth, Horizontal, degrees</b>	67	65	63	66	60	60	62	63
<b>Beamwidth, Vertical, degrees</b>	11.8	10.6	9.8	7	5.5	5	4.4	4.1
<b>Beam Tilt, degrees</b>	2–14	2–14	2–14	2–12	2–12	2–12	2–12	2–12
<b>USLS (First Lobe), dB</b>	16	17	16	17	16	17	17	16
<b>Front-to-Back Ratio at 180°, dB</b>	31	33	34	31	31	36	35	31
<b>Isolation, Cross Polarization, dB</b>	28	28	28	28	28	28	28	28
<b>Isolation, Inter-band, dB</b>	30	30	30	28	30	30	30	30
<b>VSWR   Return loss, dB</b>	1.5 14.0	1.5 14.0	1.5 14.0	1.5 14.0	1.5 14.0	1.5 14.0	1.5 14.0	1.5 14.0

# RYVV-65B-R4

<b>PIM, 3rd Order, 2 x 20 W, dBc</b>	-150	-150	-150	-150	-150	-150	-150	-150
<b>Input Power per Port at 50°C, maximum, watts</b>	300	300	300	250	250	250	200	200

## Electrical Specifications, BASTA

<b>Frequency Band, MHz</b>	<b>694–790</b>	<b>790–890</b>	<b>890–960</b>	<b>1427–1518</b>	<b>1695–1920</b>	<b>1920–2180</b>	<b>2300–2500</b>	<b>2500–2690</b>
<b>Gain by all Beam Tilts, average, dBi</b>	14.9	15.5	15.7	15.8	17.3	18.1	18.5	18.2
<b>Gain by all Beam Tilts Tolerance, dB</b>	±0.3	±0.4	±0.4	±0.4	±0.7	±0.6	±0.5	±0.4
<b>Gain by Beam Tilt, average, dBi</b>	2° 14.9 8° 14.9 14° 14.7	2° 15.5 8° 15.6 14° 15.2	2° 15.8 8° 15.8 14° 15.3	2° 15.8 7° 15.9 12° 15.8	2° 17.1 7° 17.3 12° 17.2	2° 17.9 7° 18.2 12° 18.0	2° 18.3 7° 18.6 12° 18.3	2° 18.1 7° 18.3 12° 17.8
<b>Beamwidth, Horizontal Tolerance, degrees</b>	±1.2	±1.8	±1.8	±4.3	±3.4	±2.5	±4.4	±4.9
<b>Beamwidth, Vertical Tolerance, degrees</b>	±0.8	±0.7	±0.6	±0.4	±0.4	±0.3	±0.2	±0.2
<b>USLS, beampeak to 20° above beampeak, dB</b>	16	17	16	17	15	16	16	15
<b>Front-to-Back Total Power at 180° ± 30°, dB</b>	25	24	24	24	27	27	28	26
<b>CPR at Boresight, dB</b>	20	21	21	15	19	22	21	20
<b>CPR at Sector, dB</b>	11	10	11	6	10	7	7	5

## Mechanical Specifications

<b>Wind Loading @ Velocity, frontal</b>	301.0 N @ 150 km/h (67.7 lbf @ 150 km/h)
<b>Wind Loading @ Velocity, lateral</b>	254.0 N @ 150 km/h (57.1 lbf @ 150 km/h)
<b>Wind Loading @ Velocity, maximum</b>	638.0 N @ 150 km/h (143.4 lbf @ 150 km/h)
<b>Wind Loading @ Velocity, rear</b>	319.0 N @ 150 km/h (71.7 lbf @ 150 km/h)
<b>Wind Speed, maximum</b>	241 km/h (150 mph)

## Packaging and Weights

<b>Width, packed</b>	456 mm   17.953 in
<b>Depth, packed</b>	357 mm   14.055 in
<b>Length, packed</b>	1975 mm   77.756 in
<b>Weight, gross</b>	38.5 kg   84.878 lb

## Regulatory Compliance/Certifications

<b>Agency</b>	<b>Classification</b>
---------------	-----------------------

# RYVV-65B-R4

---

CE	Compliant with the relevant CE product directives
CHINA-ROHS	Above maximum concentration value
ISO 9001:2015	Designed, manufactured and/or distributed under this quality management system
ROHS	Compliant/Exempted
UK-ROHS	Compliant/Exempted



## Included Products

- BSAMNT-3 – Wide Profile Antenna Downtilt Mounting Kit for 2.4 - 4.5 in (60 - 115 mm) OD round members. Kit contains one scissor top bracket set and one bottom bracket set.

## \* Footnotes

**Performance Note** Severe environmental conditions may degrade optimum performance

# BSAMNT-3



Wide Profile Antenna Downtilt Mounting Kit for 2.4 - 4.5 in (60 - 115 mm) OD round members. Kit contains one scissor top bracket set and one bottom bracket set.

## Product Classification

**Product Type** Downtilt mounting kit

## General Specifications

**Application** Outdoor

**Color** Silver

## Dimensions

**Compatible Diameter, maximum** 115 mm | 4.528 in

**Compatible Diameter, minimum** 60 mm | 2.362 in

**Weight, net** 6.2 kg | 13.669 lb

## Material Specifications

**Material Type** Galvanized steel

## Packaging and Weights

**Included** Brackets | Hardware

**Packaging quantity** 1

**Weight, gross** 6.4 kg | 14.11 lb

## Regulatory Compliance/Certifications

Agency	Classification
CE	Compliant with the relevant CE product directives
CHINA-ROHS	Below maximum concentration value
ISO 9001:2015	Designed, manufactured and/or distributed under this quality management system
REACH-SVHC	Compliant as per SVHC revision on <a href="http://www.commscope.com/ProductCompliance">www.commscope.com/ProductCompliance</a>
ROHS	Compliant
UK-ROHS	Compliant

