

R2V4PX306R



12-port sector antenna, 4x 698–960 and 8x 1710–2690 MHz, 65° HPBW, 6x RET with manual override. Bands cascaded SRET (Antenna 1 and Antenna 2).

OBSOLETE

This product was discontinued on: **March 31, 2022**

Replaced By:

RRV4-65A-R6

12-port sector antenna, 4x 694–960 and 8x 1695–2690 MHz, 65° HPBW, 6x RET

General Specifications

Antenna Type	Sector
Band	Multiband
Grounding Type	RF connector inner conductor and body grounded to reflector and mounting bracket
Performance Note	Outdoor usage
Radome Material	ASA, UV stabilized
Radiator Material	Brass Low loss circuit board
Reflector Material	Aluminum
RF Connector Interface	7-16 DIN Female
RF Connector Location	Bottom
RF Connector Quantity, high band	8
RF Connector Quantity, low band	4
RF Connector Quantity, total	12

Remote Electrical Tilt (RET) Information

RET Interface	8-pin DIN Female 8-pin DIN Male
RET Interface, quantity	2 female 2 male
Input Voltage	10–30 Vdc

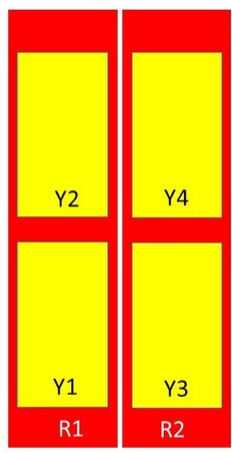
R2V4PX306R

Internal RET	High band (4) Low band (2)
Power Consumption, idle state, maximum	2 W
Power Consumption, normal conditions, maximum	13 W
Protocol	3GPP/AISG 2.0 (Single RET)

Dimensions

Width	641 mm 25.236 in
Depth	244 mm 9.606 in
Length	1607 mm 63.268 in
Net Weight, without mounting kit	49 kg 108.026 lb

Array Layout



Array	Freq (MHz)	Conns	RET (SRET)	AISG RET UID
R1	698-960	1-2	1	CPxxxxxxxxxxxxxxxxR1
R2	698-960	3-4	2	CPxxxxxxxxxxxxxxxxR2
Y1	1710-2690	5-6	3	CPxxxxxxxxxxxxxxxxY1
Y2	1710-2690	7-8	4	CPxxxxxxxxxxxxxxxxY2
Y3	1710-2690	9-10	5	CPxxxxxxxxxxxxxxxxY3
Y4	1710-2690	11-12	6	CPxxxxxxxxxxxxxxxxY4

Left Bottom Right

(Sizes of colored boxes are not true depictions of array sizes)

Electrical Specifications

Impedance	50 ohm
Operating Frequency Band	1710 – 2690 MHz 698 – 960 MHz
Polarization	±45°

Electrical Specifications

Frequency Band, MHz	698–790	790–890	890–960	1710–1920	1920–2170	2300–2690
Gain, dBi	14.2	14.8	15.1	15.1	16.4	16.9
Beamwidth, Horizontal,	65	63	60	62	57	58

R2V4PX306R

degrees

Beamwidth, Vertical, degrees	16.3	14.5	13.3	13.7	12.1	9.9
Beam Tilt, degrees	0–10	0–10	0–10	0–10	0–10	0–10
USLS (First Lobe), dB	18	18	18	18	18	18
Front-to-Back Ratio at 180°, dB	32	31	29	29	32	32
CPR at Boresight, dB	23	16	15	22	21	14
CPR at Sector, dB	15	13	11	11	10	3
Isolation, Cross Polarization, dB	25	25	25	25	25	25
Isolation, Inter-band, dB	30	30	30	30	30	30
VSWR Return loss, dB	1.43 15.0	1.43 15.0	1.43 15.0	1.5 14.0	1.5 14.0	1.5 14.0
PIM, 3rd Order, 2 x 20 W, dBc	-150	-150	-150	-150	-150	-150
Input Power per Port, maximum, watts	300	300	300	250	250	250

Electrical Specifications, BASTA

Frequency Band, MHz	698–790	790–890	890–960	1710–1920	1920–2170	2300–2690
Gain by all Beam Tilts, average, dBi	13.8	14.4	14.8	14.9	15.9	16.5
Gain by all Beam Tilts Tolerance, dB	±0.5	±0.3	±0.2	±0.7	±0.4	±0.6
Gain by Beam Tilt, average, dBi	0° 13.8 5° 13.8 10° 13.8	0° 14.4 5° 14.4 10° 14.4	0° 14.8 5° 14.8 10° 14.8	0° 15.0 5° 14.9 10° 14.8	0° 16.0 5° 15.9 10° 15.6	0° 16.6 5° 16.6 10° 16.3
Beamwidth, Horizontal Tolerance, degrees	±2.3	±2.3	±2.4	±5	±2.6	±5.3
Beamwidth, Vertical Tolerance, degrees	±1	±0.8	±0.4	±1	±1	±0.9
USLS, beampeak to 20° above beampeak, dB	18	18	18	18	18	18
Front-to-Back Total Power at 180° ± 30°, dB	26	26	24	29	31	31
CPR at Boresight, dB	22	16	15	22	21	14
CPR at Sector, dB	15	12	11	11	10	3

Mechanical Specifications

Wind Loading @ Velocity, frontal	1,296.0 N @ 150 km/h (291.4 lbf @ 150 km/h)
Wind Loading @ Velocity, lateral	274.0 N @ 150 km/h (61.6 lbf @ 150 km/h)
Wind Loading @ Velocity, rear	1,367.0 N @ 150 km/h (307.3 lbf @ 150 km/h)

R2V4PX306R

Wind Speed, maximum 250 km/h (155 mph)

Packaging and Weights

Width, packed 739 mm | 29.095 in

Depth, packed 347 mm | 13.661 in

Length, packed 1810 mm | 71.26 in

Weight, gross 73 kg | 160.937 lb

Regulatory Compliance/Certifications

Agency	Classification
CE	Compliant with the relevant CE product directives
CHINA-ROHS	Above maximum concentration value
ISO 9001:2015	Designed, manufactured and/or distributed under this quality management system
REACH-SVHC	Compliant as per SVHC revision on www.commscope.com/ProductCompliance
ROHS	Compliant/Exempted
UK-ROHS	Compliant/Exempted



Included Products

- ATCB-B01-C50 – AISG RET Control Cable, 0.5 m
- T-041-GL-E – Adjustable Tilt Pipe Mounting Kit for 2.0"-4.5" (60-115mm) OD round members for panel antennas. Includes 2 clamp sets.

* Footnotes

Performance Note Severe environmental conditions may degrade optimum performance

ATCB-B01-C50



AISG RET Control Cable, 0.5 m

- Feeds data and power to RET system components
- AISG and RoHS compliant

Product Classification

Product Type AISG standard cable

General Specifications

AISG Connector A 8-pin DIN Female

AISG Connector A Body Style Straight

AISG Connector A Standard IEC 60130-9

AISG Connector B 8-pin DIN Male

AISG Connector B Body Style Straight

AISG Connector B Standard IEC 60130-9

Color Black

Data Conductor Type 0.24 mm² (24 AWG) twisted pair

EU Certification CB | CE

Power Conductor Type 0.82 mm² (18 AWG) stranded

Total Conductors, quantity 6

Dimensions

Length 0.5 m | 1.64 ft

Diameter Over Jacket 8 mm | 0.315 in

Electrical Specifications

Protocol AISG 1.1 | AISG 2.0

Voltage, maximum 300 V

Environmental Specifications

Operating Temperature -40 °C to +70 °C (-40 °F to +158 °F)

Relative Humidity Up to 100%

ATCB-B01-C50

Climatic Sequence Test Method	IEC 60068-2-14
Cold Exposure Test Method	IEC 60068-2-1
Damp Heat Exposure Test Method	IEC 60068-2-30, Test Condition Db
Heat Exposure Test Method	IEC 60068-2-2
Ingress Protection Test Method	IEC 60529:2001, IP67
Rain Simulation Test Method	IEC 60068-2-18, Test Condition Ra, Method 1
UV Resistance Test Method	IEC 60068-2-5, Test Condition B

Packaging and Weights

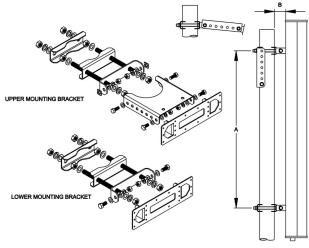
Weight, net 0.1 kg | 0.22 lb

Regulatory Compliance/Certifications

Agency	Classification
CE	Compliant with the relevant CE product directives
CHINA-ROHS	Below maximum concentration value
ISO 9001:2015	Designed, manufactured and/or distributed under this quality management system
REACH-SVHC	Compliant as per SVHC revision on www.commscope.com/ProductCompliance
ROHS	Compliant
UK-ROHS	Compliant



T-041-GL-E



Adjustable Tilt Pipe Mounting Kit for 2.0"-4.5" (60-115mm) OD round members for panel antennas. Includes 2 clamp sets.

Product Classification

Product Type Adjustable tilt mounting kit

General Specifications

Application Outdoor

Color Silver

Dimensions

Compatible Length, maximum 1500 mm | 59.055 in

Compatible Length, minimum 1200 mm | 47.244 in

Compatible Diameter, maximum 115 mm | 4.528 in

Compatible Diameter, minimum 60 mm | 2.362 in

Antenna-to-Pipe Distance 85 mm | 3.346 in

Bracket-to-Bracket Distance 976 mm | 38.425 in

Weight, net 5.5 kg | 12.125 lb

Material Specifications

Material Type Galvanized steel

Mechanical Specifications

Mechanical Tilt 0°-12° in steps of 2°

Packaging and Weights

Included Brackets | Hardware

Packaging quantity 1

Regulatory Compliance/Certifications

Agency	Classification
CE	Compliant with the relevant CE product directives

T-041-GL-E

CHINA-ROHS	Below maximum concentration value
ISO 9001:2015	Designed, manufactured and/or distributed under this quality management system
REACH-SVHC	Compliant as per SVHC revision on www.commscope.com/ProductCompliance
ROHS	Compliant
UK-ROHS	Compliant

