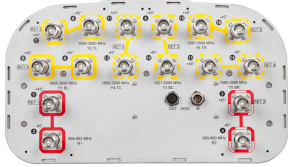


# EGZV5-65D-R6



16-port sector antenna, 2x 694–862, 2x 880–960, 2x 1427–2690 and 10x 1695–2690 MHz, 65° HPBW, 6x RET

- All Internal RET actuators are connected in “Cascaded SRET” configuration
- Electrical tilt settings applicable to RF Ports R1, R2, Y3 & Y4 can be set independently (See Array Layout and RET Table below)
- A common electrical tilt setting is shared by RF Ports Y1/Y5 and Y2/Y6 for MIMO 4X4 purposes

This product will be discontinued on: November 30, 2024

## General Specifications

<b>Antenna Type</b>	Sector
<b>Band</b>	Multiband
<b>Grounding Type</b>	RF connector inner conductor and body grounded to reflector and mounting bracket
<b>Performance Note</b>	Outdoor usage   Wind loading figures are validated by wind tunnel measurements described in white paper WP-112534-EN
<b>Radome Material</b>	Fiberglass, UV resistant
<b>Radiator Material</b>	Low loss circuit board
<b>Reflector Material</b>	Aluminum
<b>RF Connector Interface</b>	4.3-10 Female
<b>RF Connector Location</b>	Bottom
<b>RF Connector Quantity, high band</b>	12
<b>RF Connector Quantity, low band</b>	4
<b>RF Connector Quantity, total</b>	16

## Remote Electrical Tilt (RET) Information

<b>RET Hardware</b>	CommRET v2
<b>RET Interface</b>	8-pin DIN Female   8-pin DIN Male
<b>RET Interface, quantity</b>	1 female   1 male
<b>Input Voltage</b>	10–30 Vdc
<b>Internal RET</b>	High band (4)   Low band (2)

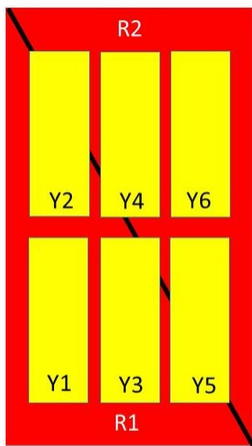
# EGZV5-65D-R6

<b>Power Consumption, idle state, maximum</b>	1 W
<b>Power Consumption, normal conditions, maximum</b>	8 W
<b>Protocol</b>	3GPP/AISG 2.0 (Single RET)

## Dimensions

<b>Width</b>	395 mm   15.551 in
<b>Depth</b>	228 mm   8.976 in
<b>Length</b>	2688 mm   105.827 in
<b>Net Weight, without mounting kit</b>	46.9 kg   103.397 lb

## Array Layout



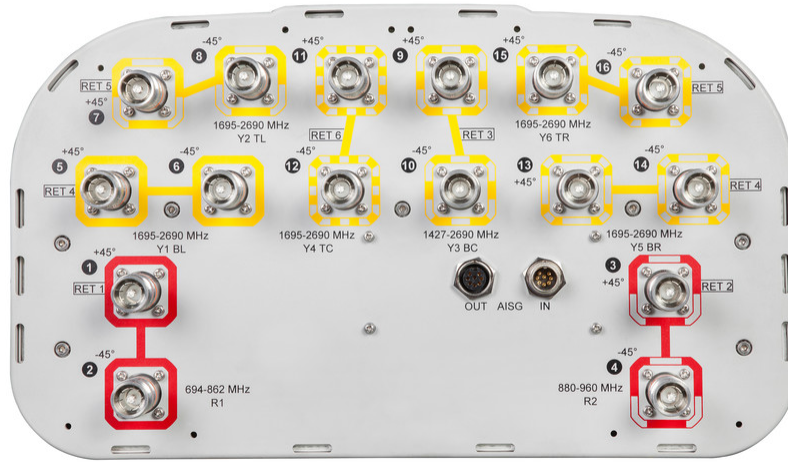
Array	Freq (MHz)	Conns	RET (SRET)	AISG RET UID
R1	694-862	1-2	1	CPXXXXXXXXXXXXXXXXR1
R2	880-960	3-4	2	CPXXXXXXXXXXXXXXXXR2
Y1	1695-2690	5-6	4	CPXXXXXXXXXXXXXXXXY1
Y5	1695-2690	13-14		
Y2	1695-2690	7-8	5	CPXXXXXXXXXXXXXXXXY2
Y6	1695-2690	15-16		
Y3	1427-2690	9-10	3	CPXXXXXXXXXXXXXXXXY3
Y4	1695-2690	11-12	6	CPXXXXXXXXXXXXXXXXY4

Left Right  
Bottom

(Sizes of colored boxes are not true depictions of array sizes)

## Port Configuration

# EGZV5-65D-R6



## Electrical Specifications

<b>Impedance</b>	50 ohm
<b>Operating Frequency Band</b>	1427 – 2690 MHz   1695 – 2690 MHz   694 – 862 MHz   880 – 960 MHz
<b>Polarization</b>	±45°
<b>Total Input Power, maximum</b>	1,000 W @ 50 °C

## Electrical Specifications

	R1	R2	Y1-Y2/Y4-Y6				Y3	Y3
Frequency Band, MHz	694–862	880–960	1695–1920	1920–2200	2300–2500	2500–2690	1427–1518	1695–2690
<b>Gain, dBi</b>	16.3	16.5	16.8	17.8	18.2	17.7	15.2	17.6
<b>Beamwidth, Horizontal, degrees</b>	65	64	68	63	59	61	69	60
<b>Beamwidth, Vertical, degrees</b>	8.5	7.4	7.2	6.4	5.7	5.3	9.3	6.7
<b>Beam Tilt, degrees</b>	2–12	2–12	2–12	2–12	2–12	2–12	2–12	2–12
<b>USLS (First Lobe), dB</b>	18	20	16	17	16	16	15	15
<b>Front-to-Back Ratio at 180°, dB</b>	34	31	32	35	34	31	33	34
<b>Isolation, Cross Polarization, dB</b>	27	27	27	27	27	27	25	25

# EGZV5-65D-R6

<b>Isolation, Inter-band, dB</b>	28	28	25	25	25	25	25	25
<b>VSWR   Return loss, dB</b>	1.5 14.0	1.5 14.0	1.5 14.0	1.5 14.0	1.5 14.0	1.5 14.0	1.5 14.0	1.5 14.0
<b>PIM, 3rd Order, 2 x 20 W, dBc</b>	-150	-150	-150	-150	-150	-150	-150	-150
<b>Input Power per Port at 50°C, maximum, watts</b>	250	250	200	200	200	200	250	200

## Electrical Specifications, BASTA

<b>Frequency Band, MHz</b>	<b>694–862</b>	<b>880–960</b>	<b>1695–1920</b>	<b>1920–2200</b>	<b>2300–2500</b>	<b>2500–2690</b>	<b>1427–1518</b>	<b>1695–2690</b>
<b>Gain by all Beam Tilts, average, dBi</b>	16.1	16.3	16.2	17.2	17.7	17.1	14.5	16.8
<b>Gain by all Beam Tilts Tolerance, dB</b>	±0.4	±0.4	±0.9	±0.8	±0.7	±0.9	±0.5	±1.2
<b>Gain by Beam Tilt, average, dBi</b>	2° 15.8 7° 16.1 12° 16.2	2° 15.9 7° 16.3 12° 16.4	2° 16.0 7° 16.3 12° 16.2	2° 16.9 7° 17.3 12° 17.1	2° 17.5 7° 17.8 12° 17.4	2° 16.9 7° 17.3 12° 16.9	2° 14.8 7° 15.0 12° 14.8	2° 16.6 7° 17.0 12° 16.7
<b>Beamwidth, Horizontal Tolerance, degrees</b>	±2.4	±1.5	±3.3	±5.6	±5.2	±5.5	±8	±8.2
<b>Beamwidth, Vertical Tolerance, degrees</b>	±0.7	±0.3	±0.4	±0.5	±0.3	±0.2	±0.4	±1.4
<b>USLS, beampeak to 20° above beampeak, dB</b>	18	20	14	16	15	14	12	13
<b>Front-to-Back Total Power at 180° ± 30°, dB</b>	27	23	23	27	28	27	26	28
<b>CPR at Boresight, dB</b>	17	17	19	21	19	20	18	20
<b>CPR at Sector, dB</b>	10	7	8	6	8	7	7	4

## Mechanical Specifications

<b>Wind Loading @ Velocity, frontal</b>	574.0 N @ 150 km/h (129.0 lbf @ 150 km/h)
<b>Wind Loading @ Velocity, lateral</b>	422.0 N @ 150 km/h (94.9 lbf @ 150 km/h)
<b>Wind Loading @ Velocity, maximum</b>	981.0 N @ 150 km/h (220.5 lbf @ 150 km/h)
<b>Wind Loading @ Velocity, rear</b>	590.0 N @ 150 km/h (132.6 lbf @ 150 km/h)
<b>Wind Speed, maximum</b>	241 km/h (150 mph)

## Packaging and Weights

<b>Width, packed</b>	505 mm   19.882 in
<b>Depth, packed</b>	386 mm   15.197 in
<b>Length, packed</b>	2821 mm   111.063 in
<b>Weight, gross</b>	66 kg   145.505 lb

# EGZV5-65D-R6

---

## Regulatory Compliance/Certifications

Agency	Classification
CE	Compliant with the relevant CE product directives
CHINA-ROHS	Above maximum concentration value
ISO 9001:2015	Designed, manufactured and/or distributed under this quality management system
ROHS	Compliant/Exempted
UK-ROHS	Compliant/Exempted



## Included Products

- BSAMNT-4 – Wide Profile Antenna Downtilt Mounting Kit for 2.4 - 4.5 in (60 - 115 mm) OD round members. Kit contains one scissor top bracket set and one bottom bracket set.

## \* Footnotes

**Performance Note** Severe environmental conditions may degrade optimum performance

# BSAMNT-4



Wide Profile Antenna Downtilt Mounting Kit for 2.4 - 4.5 in (60 - 115 mm) OD round members. Kit contains one scissor top bracket set and one bottom bracket set.

## Product Classification

**Product Type** Downtilt mounting kit

## General Specifications

**Application** Outdoor

**Color** Silver

## Dimensions

**Compatible Diameter, maximum** 115 mm | 4.528 in

**Compatible Diameter, minimum** 60 mm | 2.362 in

**Weight, net** 6.5 kg | 14.33 lb

## Material Specifications

**Material Type** Galvanized steel

## Packaging and Weights

**Included** Brackets | Hardware

**Packaging quantity** 1

## Regulatory Compliance/Certifications

Agency	Classification
CHINA-ROHS	Below maximum concentration value
ISO 9001:2015	Designed, manufactured and/or distributed under this quality management system
REACH-SVHC	Compliant as per SVHC revision on <a href="http://www.commscope.com/ProductCompliance">www.commscope.com/ProductCompliance</a>
ROHS	Compliant
UK-ROHS	Compliant

