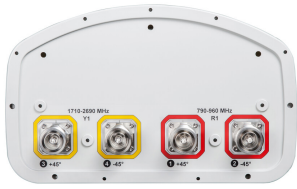


# CV65BSX-M | CV65BSX-2X2



4-port sector antenna, 2x 790–960 and 2x 1710–2690 MHz, 65° HPBW, RET compatible

- Utilizes AccuRET® actuator(s) on the back of the antenna

## OBSOLETE

This product was discontinued on: March 31, 2023

## General Specifications

<b>Antenna Type</b>	Sector
<b>Band</b>	Multiband
<b>Color</b>	Light Gray (RAL 7035)
<b>Grounding Type</b>	RF connector inner conductor and body grounded to reflector and mounting bracket
<b>Performance Note</b>	Outdoor usage   Wind loading figures are validated by wind tunnel measurements described in white paper WP-112534-EN
<b>Radome Material</b>	Fiberglass, UV resistant
<b>Radiator Material</b>	Aluminum
<b>RF Connector Interface</b>	7-16 DIN Female
<b>RF Connector Location</b>	Bottom
<b>RF Connector Quantity, high band</b>	2
<b>RF Connector Quantity, mid band</b>	0
<b>RF Connector Quantity, low band</b>	2
<b>RF Connector Quantity, total</b>	4

## Remote Electrical Tilt (RET) Information

<b>Model with Factory Installed AISG 2.0 Actuator</b>	CV65BSX-2X2
---	-------------

## Dimensions

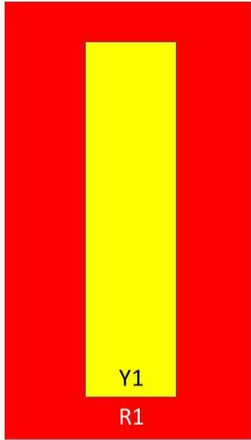
<b>Width</b>	301 mm   11.85 in
<b>Depth</b>	181 mm   7.126 in
<b>Length</b>	1974 mm   77.717 in

# CV65BSX-M | CV65BSX-2X2

Net Weight, without mounting kit

17.9 kg | 39.463 lb

## Array Layout



Array	Freq (MHz)	Conns
R1	790-960	1-2
Y1	1710-2690	3-4

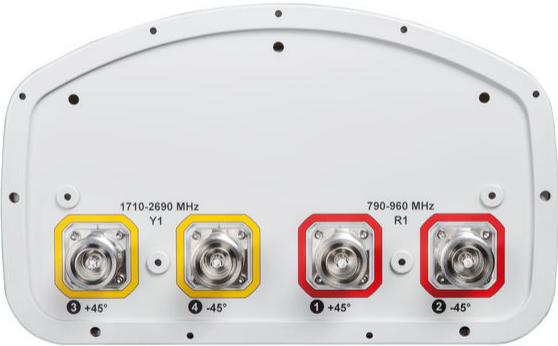
Bottom

(Sizes of colored boxes are not true depictions of array sizes)

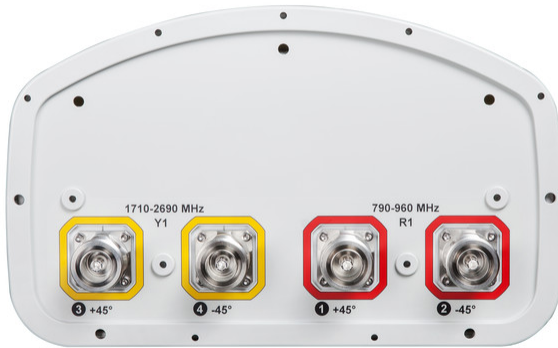
## Port Configuration

# CV65BSX-M | CV65BSX-2X2

---



# CV65BSX-M | CV65BSX-2X2



## Electrical Specifications

<b>Impedance</b>	50 ohm
<b>Operating Frequency Band</b>	1710 – 2690 MHz   790 – 960 MHz
<b>Polarization</b>	±45°

## Electrical Specifications

Frequency Band, MHz	790–896	870–960	1710–1880	1850–1990	1920–2180	2300–2500	2500–2690
<b>Gain, dBi</b>	15.6	15.6	17.4	17.7	18.1	18	18.2
<b>Beamwidth, Horizontal, degrees</b>	63	62	71	66	67	57	58
<b>Beamwidth, Vertical, degrees</b>	10.5	9.7	5.6	5.3	5	4.3	4.1
<b>Beam Tilt, degrees</b>	0–10	0–10	2–12	2–12	2–12	2–12	2–12
<b>USLS (First Lobe), dB</b>	14	16	15	16	16	15	16
<b>Front-to-Back Ratio at 180°, dB</b>	29	29	28	25	23	29	30
<b>CPR at Boresight, dB</b>	23	22	20	20	20	16	18
<b>CPR at Sector, dB</b>	10	10	9	7	7	5.3	7
<b>Isolation, Cross Polarization, dB</b>	28	28	28	28	28	28	28
<b>Isolation, Inter-band, dB</b>	30	30	30	30	30	30	30

# CV65BSX-M | CV65BSX-2X2

<b>VSWR   Return loss, dB</b>	1.5 14.0	1.5 14.0	1.5 14.0	1.5 14.0	1.5 14.0	1.5 14.0	1.5 14.0
<b>PIM, 3rd Order, 2 x 20 W, dBc</b>	-150	-150	-150	-150	-150	-150	-150
<b>Input Power per Port, maximum, watts</b>	350	350	350	350	350	300	300

## Mechanical Specifications

<b>Wind Loading @ Velocity, frontal</b>	306.0 N @ 150 km/h (68.8 lbf @ 150 km/h)
<b>Wind Loading @ Velocity, lateral</b>	253.0 N @ 150 km/h (56.9 lbf @ 150 km/h)
<b>Wind Loading @ Velocity, maximum</b>	589.0 N @ 150 km/h (132.4 lbf @ 150 km/h)
<b>Wind Loading @ Velocity, rear</b>	310.0 N @ 150 km/h (69.7 lbf @ 150 km/h)
<b>Wind Speed, maximum</b>	241 km/h (150 mph)

## Packaging and Weights

<b>Width, packed</b>	441 mm   17.362 in
<b>Depth, packed</b>	337 mm   13.268 in
<b>Length, packed</b>	2108 mm   82.992 in
<b>Weight, gross</b>	34.6 kg   76.28 lb

## Regulatory Compliance/Certifications

Agency	Classification
CE	Compliant with the relevant CE product directives
ISO 9001:2015	Designed, manufactured and/or distributed under this quality management system
REACH-SVHC	Compliant as per SVHC revision on <a href="http://www.andrew.com/ProductCompliance">www.andrew.com/ProductCompliance</a>
ROHS	Compliant
UK-ROHS	Compliant



## Included Products

BSAMNT-OFFSET	- Forward Offset Pipe Mounting Kit for 4.5 in (114.3 mm) OD round members
---------------	---

## \* Footnotes

<b>Performance Note</b>	Severe environmental conditions may degrade optimum performance
-------------------------	---