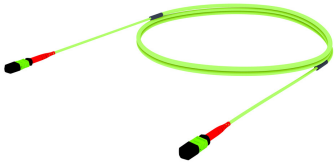


URV2P2PHF

Base Product



Ultra Low Loss (ULL) OM5, MPO24 (Unpinned) to MPO24 (Unpinned), 24-Fiber, Low Smoke Zero Halogen (LSZH) Patchcord

Product Classification

Regional Availability	Australia/New Zealand Europe Latin America Middle East/Africa
Portfolio	CommScope®
Product Type	Fiber array cable assembly
Product Brand	SYSTIMAX ULL
Ordering Note	For additional jacket colors, please contact a CommScope Sales Representative For lengths greater than 999 ft (304 m), orders must be in meters Minimum length may vary based on cable configuration

General Specifications

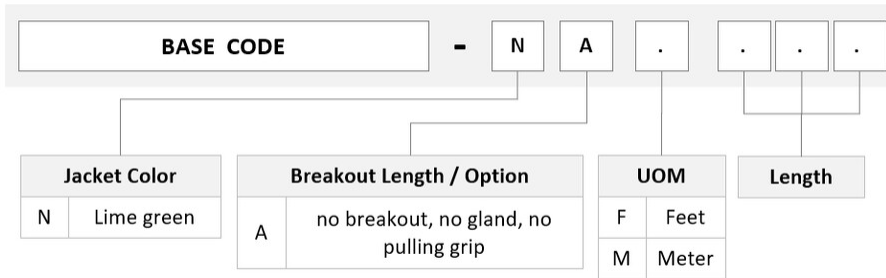
Color, boot A	Red
Color, connector A	Lime green
Color, boot B	Red
Color, connector B	Lime green
Construction Type	Stranded
Furcation Color	Lime green
Interface, Connector A	MPO-24/UPC Female
Interface, Connector B	MPO-24/UPC Female
Jacket Color	Lime green
Polarity	Method B Enhanced (ULL)
Fibers per Subunit, quantity	24
Total Fibers, quantity	24

Dimensions

Cable Assembly Length Range (m)	1 – 305
Cable Assembly Length Range (ft)	3 – 999

URV2P2PHF

Ordering Tree



Mechanical Specifications

Cable Retention Strength, maximum 11.24 lb @ 0 ° | 4.40 lb @ 90 °

Optical Specifications

Fiber Mode Multimode

Fiber Type OM5, LazrSPEED®

Environmental Specifications

Operating Temperature -10 °C to +60 °C (+14 °F to +140 °F)

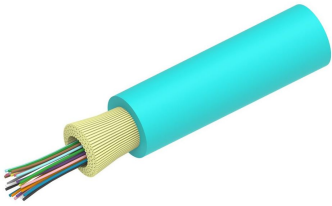
Environmental Space Indoor | Low Smoke Zero Halogen (LSZH)

Regulatory Compliance/Certifications

Agency	Classification
ISO 9001:2015	Designed, manufactured and/or distributed under this quality management system

Included Products

- | | |
|----------------------------------|--|
| 760235987
N-024-MP-5G-F36LM/D | - Fiber indoor cable, LazrSPEED® Low Smoke Zero Halogen Riser Light Duty for MPO Patchcords, 24 fiber, Multimode OM5, Gel-free, Feet jacket marking, Lime green jacket color, Dca Flame rating |
| 860634624 | - LazrSPEED® Elite MPO Female 24 Fiber Connector, lime green |



Fiber indoor cable, LazrSPEED® Low Smoke Zero Halogen Riser Light Duty for MPO Patchcords, 24 fiber, Multimode OM5, Gel-free, Feet jacket marking, Lime green jacket color, Dca Flame rating

Product Classification

Regional Availability	Asia Australia/New Zealand EMEA Latin America North America
Portfolio	CommScope®
Product Type	Fiber indoor cable
Product Series	N-MP

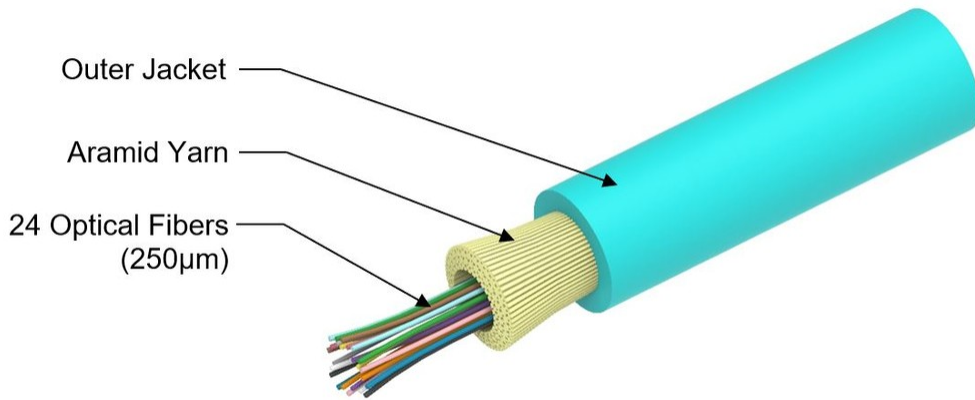
General Specifications

Cable Type	MPO trunk cable
Construction Type	Non-armored
Subunit Type	Gel-free
Jacket Color	Lime green
Jacket Marking	Feet
Total Fiber Count	24

Dimensions

Diameter Over Jacket	3.6 mm 0.142 in
-----------------------------	-------------------

Representative Image



Mechanical Specifications

Minimum Bend Radius, loaded	54 mm 2.126 in
Minimum Bend Radius, unloaded	29 mm 1.142 in
Tensile Load, long term, maximum	120 N 26.977 lbf
Tensile Load, short term, maximum	400 N 89.924 lbf
Compression	4 N/mm 22.841 lb/in
Compression Test Method	FOTP-41 IEC 60794-1 E3
Flex	300 cycles
Flex Test Method	FOTP-104 IEC 60794-1 E6
Impact	0.74 N-m 6.55 in lb
Impact Test Method	FOTP-25 IEC 60794-1 E4
Strain	See long and short term tensile loads
Strain Test Method	FOTP-33 IEC 60794-1 E1
Twist	10 cycles
Twist Test Method	FOTP-85 IEC 60794-1 E7
Vertical Rise, maximum	500 m 1,640.42 ft

Optical Specifications

Fiber Type	OM5, LazrSPEED® wideband OM5, LazrSPEED® wideband
-------------------	---

Environmental Specifications

Installation temperature	0 °C to +60 °C (+32 °F to +140 °F)
Operating Temperature	0 °C to +70 °C (+32 °F to +158 °F)

760235987 | N-024-MP-5G-F36LM/D

Storage Temperature	-40 °C to +70 °C (-40 °F to +158 °F)
Cable Qualification Standards	ANSI/ICEA S-83-596 Telcordia GR-409
EN50575 CPR Cable EuroClass Fire Performance	Dca
EN50575 CPR Cable EuroClass Smoke Rating	s1a
EN50575 CPR Cable EuroClass Droplets Rating	d0
EN50575 CPR Cable EuroClass Acidity Rating	a1
Environmental Space	Low Smoke Zero Halogen (LSZH) Riser
Flame Test Listing	NEC OFNR-ST1 (ETL) and c(ETL)
Flame Test Method	IEC 60332-3 IEC 60754-2 IEC 61034-2 UL 1666 UL 1685

Environmental Test Specifications

Heat Age	0 °C to +85 °C (+32 °F to +185 °F)
Heat Age Test Method	IEC 60794-1 F9
Low High Bend	0 °C to +70 °C (+32 °F to +158 °F)
Low High Bend Test Method	FOTP-37 IEC 60794-1 E11
Temperature Cycle	0 °C to +70 °C (+32 °F to +158 °F)
Temperature Cycle Test Method	FOTP-3 IEC 60794-1 F1

Packaging and Weights

Cable weight	11.8 kg/km 7.929 lb/kft
---------------------	---------------------------

Regulatory Compliance/Certifications

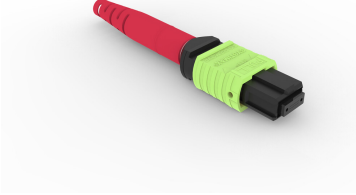
Agency	Classification
CENELEC	EN 50575 compliant, Declaration of Performance (DoP) available
CHINA-ROHS	Below maximum concentration value
ISO 9001:2015	Designed, manufactured and/or distributed under this quality management system
REACH-SVHC	Compliant as per SVHC revision on www.commscope.com/ProductCompliance
ROHS	Compliant
UK-ROHS	Compliant



* Footnotes

Operating Temperature Specification applicable to non-terminated bulk fiber cable

LazrSPEED® Elite MPO Female 24 Fiber Connector, lime green



Product Classification

Regional Availability	Asia Australia/New Zealand EMEA Latin America North America
Portfolio	CommScope®
Product Type	Fiber connector
Product Brand	LazrSPEED®

General Specifications

Color	Lime green
Color, boot	Red
Ferrule Geometry	Flat
Interface	MPO/UPC Female
Interface Feature	Unpinned
Total Fiber Count	24

Dimensions

Length	60.1 mm 2.366 in
Compatible Cable Diameter	3 mm 0.118 in

Material Specifications

Ferrule Material	Polymer
-------------------------	---------

Mechanical Specifications

Cable Retention Strength, maximum	11.24 lb @ 0 °
--	----------------

Optical Specifications

Fiber Mode	Multimode
Fiber Type	OM5, LazrSPEED® wideband
Insertion Loss Change, mating	0.3 dB

860634624

Optical Components Standard	ANSI/TIA-568-C.3
Insertion Loss Change, temperature	0.3 dB
Insertion Loss, maximum	0.27 dB
Insertion Loss, ULL, maximum	0.2 dB
Return Loss, minimum	27 dB

Packaging and Weights

Packaging quantity	1
---------------------------	---

Regulatory Compliance/Certifications

Agency	Classification
CHINA-ROHS	Above maximum concentration value
ISO 9001:2015	Designed, manufactured and/or distributed under this quality management system
REACH-SVHC	Compliant as per SVHC revision on www.commscope.com/ProductCompliance
ROHS	Compliant/Exempted
UK-ROHS	Compliant



* Footnotes

Insertion Loss Change, mating	TIA-568: Maximum insertion loss change after 500 matings
Insertion Loss Change, temperature	Maximum insertion loss change from -10 °C to +60 °C (+14 °F to +140 °F)