

# CRRRB | IPO6-06BUTP-1100E-1100E

## Base Product



InstaPATCH® Cu GigaSPEED XL® U/UTP LSZH Class B2ca  
Preterminated Copper Cable, 360 1100 Evolve module to 360 1100  
Evolve module, 6 links

## Product Classification

|                              |  |
|------------------------------|--|
| <b>Regional Availability</b> | EMEA                                       |
| <b>Portfolio</b>             | CommScope®                                 |
| <b>Product Type</b>          | Copper trunk cable assembly                |
| <b>Product Brand</b>         | GigaSPEED XL®   InstaPATCH® Cu             |
| <b>Ordering Note</b>         | Available cable jacket colors: blue, white |

## General Specifications

|                                       |                        |
|---------------------------------------|------------------------|
| <b>ANSI/TIA Category</b>              | 6                      |
| <b>Cable Type</b>                     | U/UTP (unshielded)     |
| <b>Conductor Type</b>                 | Solid                  |
| <b>Interface, Connector A</b>         | 360 1100 Evolve module |
| <b>Interface Feature, connector A</b> | Standard               |
| <b>Interface, Connector B</b>         | 360 1100 Evolve module |
| <b>Interface Feature, connector B</b> | Standard               |
| <b>Link Count</b>                     | 6                      |
| <b>Wiring</b>                         | T568B                  |

## Dimensions

|   |         |
|---|---------|
| <b>Cable Assembly Length Range (m)</b>  | 2 – 90  |
| <b>Cable Assembly Length Range (ft)</b> | 7 – 295 |

## Electrical Specifications

|                               |         |
|-------------------------------|---------|
| <b>dc Resistance, maximum</b> | 0.3 ohm |
| <b>Safety Voltage Rating</b>  | 300 V   |

## Ordering Tree

# CRRRB | IPO6-06BUTP-1100E-1100E

1 2 3 4 5 6 7 8 9 10 11 12  
C A A A C - 1 1 H A B B F 0 5 0

| Cable Type                            | Connector B                                | Orientation A           | Orientation B           |
|---------------------------------------|--|-------------------------|-------------------------|
| A Cat 6A X10D – U/UTP (Plenum)        | A Outlet* – Single Row Standard Density    | 1 Trident Series Flat   | 1 Trident Series Flat   |
| B Cat 6A X10D – U/UTP (Riser)         | B Outlet* – Dual Row Standard Density      | 2 Right Paired Flat     | 2 Right Paired Flat     |
| C Cat 6A X10D – U/UTP (LSZH)          | C Outlet* – Dual Row High Density          | 3 Right Series Flat     | 3 Right Series Flat     |
| D Cat 6A X10D – F/UTP (Plenum)        | G RJ45 Plug* – Single Row Standard Density | 4 Left Paired Flat      | 4 Left Paired Flat      |
| E Cat 6A X10D – F/UTP (Riser)         | H RJ45 Plug* – Dual Row Standard Density   | 5 Left Series Flat      | 5 Left Series Flat      |
| F Cat 6A X10D – F/UTP (LSZH)          | J RJ45 Plug* – Dual Row High Density       | 6 Trident Paired Flat   | 6 Trident Paired Flat   |
| G Cat 6 XL – U/UTP (Plenum)           | N 1100 Module                              | A Trident Series Angled | A Trident Series Angled |
| H Cat 6 XL – U/UTP (Riser)            | R 360 1100 Evolve Module                   | B Right Paired Angled   | B Right Paired Angled   |
| I Cat 6 XL – U/UTP (LSZH)             | S OneLink 2x6                              | C Right Series Angled   | C Right Series Angled   |
| J Cat 6A X10D – S/FTP (LSZH)          | T OneLink 2x4                              | D Left Paired Angled    | D Left Paired Angled    |
| K Cat 6 – U/UTP Class B Rated (LSZH)  |  | E Left Series Angled    | E Left Series Angled    |
| L Cat 6A – U/UTP Class B Rated (LSZH) |  | F Trident Paired Angled | F Trident Paired Angled |
| M Cat 6A X10D SD – U/UTP (Riser)      |  | X Not Applicable        | X Not Applicable        |

| Connector A                                | Link | Outlet Color     | UOM       | Length |
|--|------|------------------|-----------|--------|
| A Outlet* – Single Row Standard Density    | B 6  | 0 Not Applicable | 11 F Foot | 12 XXX |
| B Outlet* – Dual Row Standard Density      | C 8  | 1 Black (BK)     | M Meter   |        |
| C Outlet* – Dual Row High Density          | D 12 | 2 Blue (BL)      |           |        |
| G RJ45 Plug* – Single Row Standard Density | E 16 | 3 White (WH)     |           |        |
| H RJ45 Plug* – Dual Row Standard Density   | F 18 |                  |           |        |
| J RJ45 Plug* – Dual Row High Density       | G 24 |                  |           |        |
| N 1100 Module                              |      |                  |           |        |
| R 360 1100 Evolve Module                   |      |                  |           |        |
| S OneLink 2x6                              |      |                  |           |        |
| T OneLink 2x4                              |      |                  |           |        |
| X Unterminated                             |      |                  |           |        |

| Bundling        | Jacket Color    | Labeling          |
|-----------------|-----------------|-------------------|
| 7 H Hook-n-loop | 8 B White (WH)  | 8 A Generic Label |
| S Sleaving      | 10 C Slate (SL) |                   |
|                 | Z Blue (BL)     |                   |

## Environmental Specifications

|   |                                     |
|---|-------------------------------------|
| <b>Operating Temperature</b>                        | -20 °C to +60 °C (-4 °F to +140 °F) |
| <b>EN50575 CPR Cable EuroClass Fire Performance</b> | B2ca                                |
| <b>EN50575 CPR Cable EuroClass Smoke Rating</b>     | s1                                  |
| <b>EN50575 CPR Cable EuroClass Droplets Rating</b>  | d0                                  |
| <b>EN50575 CPR Cable EuroClass Acidity Rating</b>   | a1                                  |
| <b>Environmental Space</b>                          | Low Smoke Zero Halogen (LSZH)       |
| <b>Flammability Rating</b>                          | UL 94 V-0                           |

## Regulatory Compliance/Certifications

| Agency        | Classification   |
|---------------|--|
| CENELEC       | EN 50575 compliant, Declaration of Performance (DoP) available   |
| CHINA-ROHS    | Below maximum concentration value  |
| ISO 9001:2015 | Designed, manufactured and/or distributed under this quality management system   |
| REACH-SVHC    | Compliant as per SVHC revision on <a href="http://www.commscope.com/ProductCompliance">www.commscope.com/ProductCompliance</a> |
| ROHS          | Compliant  |
| UK-ROHS       | Compliant  |



## Included Products

# CRRRB | IP06-06BUTP-1100E-1100E

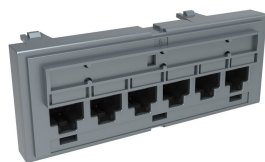
---

760151167  
360-IPR-1100-GS3-DM6

- SYSTIMAX 360™ GigaSPEED XL® 1100GS3 Evolve Category 6 U/UTP Distribution Module, 6 port

760241923  
3071E-B WHT C6 4/23 U/UTP  
W1000

- GigaSPEED XL® 3071E-B ETL Verified Category 6 U/UTP Cable, low smoke zero halogen, white jacket, 4 pair count, 1000 ft (305 m) length, WE TOTE® box



## SYSTIMAX 360™ GigaSPEED XL® 1100GS3 Evolve Category 6 U/UTP Distribution Module, 6 port

### Product Classification

#### Regional Availability

Asia | Australia/New Zealand | EMEA | Latin America | North America

#### Portfolio

SYSTIMAX®

#### Product Type

Module

#### Product Brand

GigaSPEED XL®

### General Specifications

#### ANSI/TIA Category

6

#### Cable Type

Unshielded

#### Color

Cool gray

#### Conductor Type

Solid | Stranded

#### Intelligence Type

iPatch® ready

#### Modules, quantity

1

#### Rack Type

EIA 19 in

#### Rack Units

1

#### Termination Type

IDC

#### Total Ports, quantity

6

#### Wiring

T568A | T568B

### Dimensions

#### Height

43.688 mm | 1.72 in

#### Width

106.68 mm | 4.2 in

#### Depth

27.432 mm | 1.08 in

#### Compatible Diameter Over Dielectric, maximum

1.168 mm | 0.046 in

#### Compatible Diameter Over Dielectric, minimum

0.762 mm | 0.03 in

#### Compatible Conductor Gauge, solid

22 AWG | 24 AWG

# 760151167 | 360-IPR-1100-GS3-DM6

**Compatible Conductor Gauge, stranded**

22 AWG | 24 AWG

## Electrical Specifications

**Current Rating at Temperature**

1.5 A @ 20 °C | 1.5 A @ 68 °F

**Dielectric Withstand Voltage, RMS, conductive surface**

1,500 Vac @ 60 Hz

**Dielectric Withstand Voltage, RMS, contact-to-contact**

1,000 Vac @ 60 Hz

**Insulation Resistance, minimum**

500 MOhm

## Material Specifications

**Contact Plating Material**

Precious metals

**Material Type**

High-impact, flame retardant, thermoplastic | Powder-coated steel

**Termination Contact Plating**

Nickel

## Mechanical Specifications

**Plug Insertion Life, minimum**

750 times

**Plug Insertion Life, test plug**

IEC 60603-7 compliant plug

**Plug Retention Force, minimum**

133.447 N | 30 lbf

## Environmental Specifications

**Operating Temperature**

-10 °C to +60 °C (+14 °F to +140 °F)

**Storage Temperature**

-40 °C to +70 °C (-40 °F to +158 °F)

**Relative Humidity**

Up to 95%, non-condensing

**Flammability Rating**

UL 94 V-0

**Safety Standard**

UL | cUL

## Packaging and Weights

**Packaging quantity**

1

**Weight, net**

0.068 kg | 0.15 lb

## Regulatory Compliance/Certifications

**Agency**

**Classification**

CHINA-ROHS

Below maximum concentration value

ISO 9001:2015

Designed, manufactured and/or distributed under this quality management system

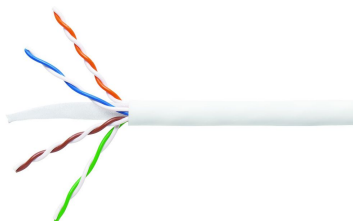
REACH-SVHC

Compliant as per SVHC revision on [www.commscope.com/ProductCompliance](http://www.commscope.com/ProductCompliance)

ROHS Compliant

UK-ROHS Compliant





GigaSPEED XL® 3071E-B ETL Verified Category 6 U/UTP Cable, low smoke zero halogen, white jacket, 4 pair count, 1000 ft (305 m) length, WE TOTE® box

## Product Classification

|                              |                    |
|------------------------------|--------------------|
| <b>Regional Availability</b> | EMEA               |
| <b>Portfolio</b>             | SYSTIMAX®          |
| <b>Product Type</b>          | Twisted pair cable |
| <b>Product Brand</b>         | GigaSPEED XL®      |

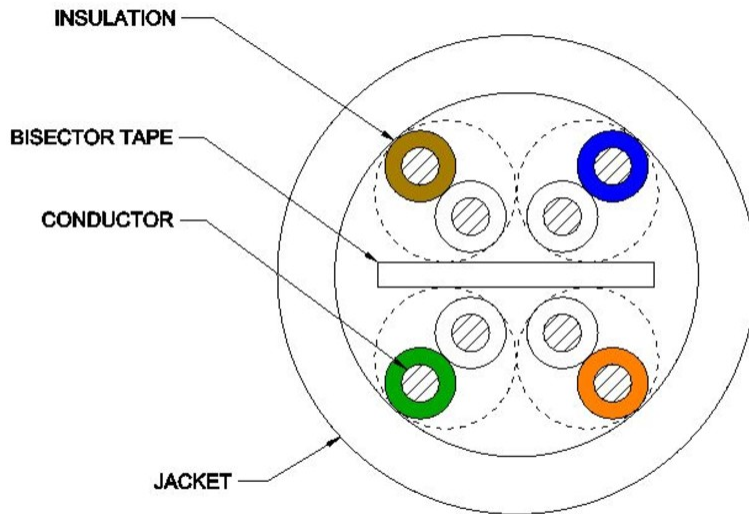
## General Specifications

|                                |   |
|--------------------------------|---|
| <b>Product Number</b>          | 3071E   |
| <b>ANSI/TIA Category</b>       | 6   |
| <b>Cable Component Type</b>    | Horizontal  |
| <b>Cable Type</b>              | U/UTP (unshielded)  |
| <b>Conductor Type, singles</b> | Solid   |
| <b>Conductors, quantity</b>    | 8   |
| <b>Jacket Color</b>            | White   |
| <b>Pairs, quantity</b>         | 4   |
| <b>Separator Type</b>          | Bisector  |
| <b>Transmission Standards</b>  | ANSI/TIA-568.2-D   CENELEC EN 50288-6-1   ISO/IEC 11801 Class E |

## Dimensions

|  |                     |
|--|---------------------|
| <b>Cable Length</b>                      | 304.8 m   1000 ft   |
| <b>Diameter Over Insulated Conductor</b> | 1.041 mm   0.041 in |
| <b>Diameter Over Jacket, nominal</b>     | 5.918 mm   0.233 in |
| <b>Jacket Thickness</b>                  | 0.559 mm   0.022 in |
| <b>Conductor Gauge, singles</b>          | 23 AWG              |

## Cross Section Drawing



## Electrical Specifications

|  |   |
|--|---|
| <b>dc Resistance Unbalance, maximum</b>      | 5 %   |
| <b>dc Resistance, maximum</b>                | 7.61 ohms/100 m   2.32 ohms/100 ft  |
| <b>Dielectric Strength, minimum</b>          | 2500 Vdc  |
| <b>Mutual Capacitance at Frequency</b>       | 5.6 nF/100 m @ 1 kHz  |
| <b>Nominal Velocity of Propagation (NVP)</b> | 70 %  |
| <b>Operating Frequency, maximum</b>          | 300 MHz   |
| <b>Operating Voltage, maximum</b>            | 80 V  |
| <b>Remote Powering</b>                       | Fully complies with the recommendations set forth by IEEE 802.3bt (Type 4) for the safe delivery of power over LAN cable when installed according to ISO/IEC 14763-2, CENELEC EN 50174-1, CENELEC EN 50174-2 or TIA TSB-184-A |
| <b>Segregation Class</b>                     | c   |

## Material Specifications

|                            |                               |
|----------------------------|-------------------------------|
| <b>Conductor Material</b>  | Bare copper                   |
| <b>Insulation Material</b> | Polyolefin                    |
| <b>Jacket Material</b>     | Low Smoke Zero Halogen (LSZH) |
| <b>Separator Material</b>  | Polyolefin                    |



## Mechanical Specifications

**Pulling Tension, maximum** 11.34 kg | 25 lb

## Environmental Specifications

**Installation temperature** 0 °C to +60 °C (+32 °F to +140 °F)

**Operating Temperature** -20 °C to +60 °C (-4 °F to +140 °F)

**Acid Gas Test Method** EN 50267-2-3

**EN50575 CPR Cable EuroClass Fire Performance** B2ca

**EN50575 CPR Cable EuroClass Smoke Rating** s1a

**EN50575 CPR Cable EuroClass Droplets Rating** d0

**EN50575 CPR Cable EuroClass Acidity Rating** a1

**Environmental Space** Low Smoke Zero Halogen (LSZH)

**Smoke Test Method** IEC 61034-2

## Packaging and Weights

**Cable weight** 38.097 kg/km | 25.6 lb/kft

**Packaging Type** WE TOTE® box

## Regulatory Compliance/Certifications

| Agency        | Classification   |
|---------------|--|
| CENELEC       | EN 50575 compliant, Declaration of Performance (DoP) available   |
| CHINA-ROHS    | Below maximum concentration value  |
| ISO 9001:2015 | Designed, manufactured and/or distributed under this quality management system   |
| REACH-SVHC    | Compliant as per SVHC revision on <a href="http://www.commscope.com/ProductCompliance">www.commscope.com/ProductCompliance</a> |
| ROHS          | Compliant  |
| UK-ROHS       | Compliant  |

