



FOSC® 400 A4 Fiber Optic Splice Closure, Heat Shrink Cable sealing, no pre-installed trays, ground feedthrough lugs

- Single-ended, O-ring sealed dome closure for splicing feeder and distribution cables
- Compatible with most common cable types: e.g. loose tube, central core, ribbon fiber
- FOSC splice trays hinged for access to any splice without disturbing other trays
- Closure can be used in aerial, pedestal and underground (up to 5 meters) environments
- Compatible with CommScope's CWDM modules and optical splitter trays

## Product Classification

<b>Regional Availability</b>	Asia   EMEA
<b>Product Type</b>	Single-ended, round fiber closure
<b>Product Brand</b>	FOSC®
<b>Product Series</b>	FOSC 400

## General Specifications

<b>Cable Blocking Components</b>	None
<b>Cable Entry Drop Port Style</b>	Round
<b>Cable Entry Main Port Style</b>	Oval
<b>Cable Ports Quantity, total</b>	1 oval port (2 cables) + 4 round ports
<b>Cable Sealing Type</b>	Heat shrink
<b>Closure Sealing Type</b>	Dome-to-base clamp with O-ring
<b>Closure Style</b>	Single-ended
<b>Color</b>	Black
<b>Flash Test Valve</b>	None
<b>Ground Feed-through</b>	Included
<b>Mounting</b>	Pole   Strand   Wall
<b>Network Area Type</b>	Feeder
<b>Splice Tray Included, quantity</b>	0
<b>Splice Tray Type Included</b>	No trays
<b>Splicing Capacity, Single Fusion, maximum</b>	48
<b>Splicing Capacity, Single Splice, 12 fibers, maximum</b>	48
<b>Splicing Capacity, Single Splice, 6 fibers, maximum</b>	24

# 519402-000 | FOSC-400A4-NT-0-NGN

**Splicing Type, Supported**

Single fusion

## Dimensions

**Length**

420 mm | 16.535 in

**Diameter**

150 mm | 5.906 in

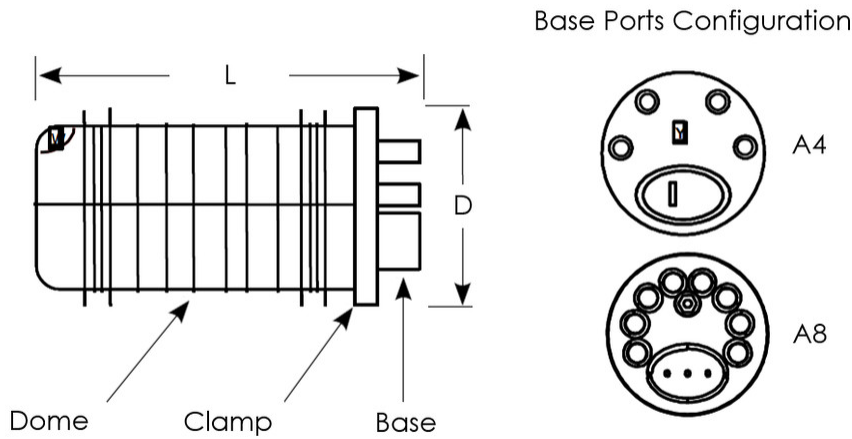
**Diameter, with clamp**

180 mm | 7.087 in

**Main Cable Diameter, maximum**

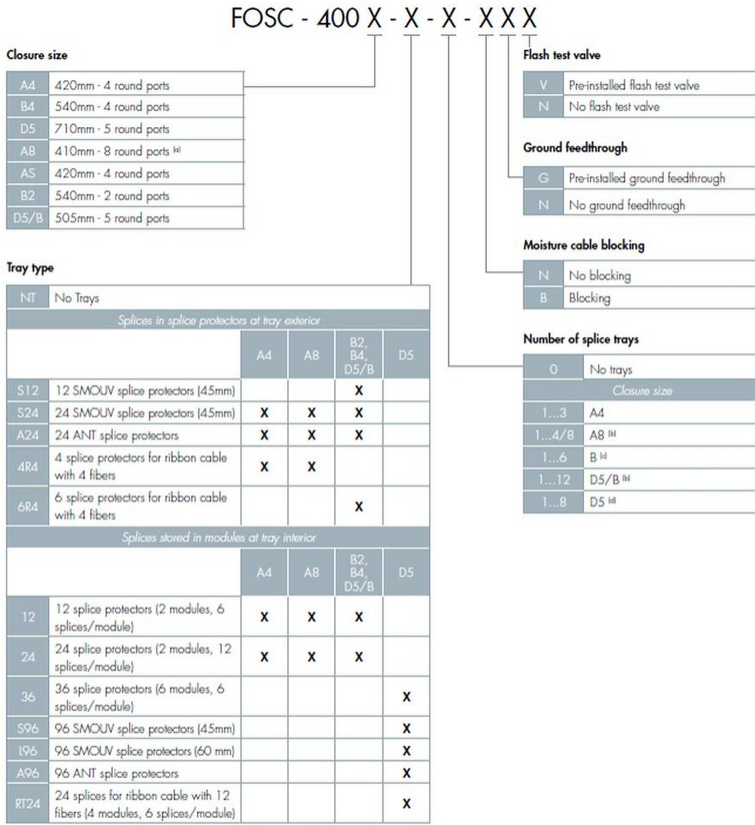
25 mm | 0.984 in

## Dimension Drawing



## Ordering Tree

# 519402-000 | FOSC-400A4-NT-0-NGN



<sup>1)</sup> A8 closure can accept a mix of standard and slim trays; please contact your local sales representative.

<sup>1)</sup> Maximum 8 trays in case of S6 or A6 tray type

<sup>1)</sup> B closure can initially be fitted with trays; however, retrofitting a standard "B" closure (delivered with 4 trays or fewer) with a 5th and 6th tray is not possible. The B closure can be ordered with up to 5 trays pre-installed and capacity for later addition of a 6th tray (FOSC-400B4XXX/6...). If 5 or 6 trays are required, a storage basket cannot be used.

<sup>1)</sup> If 7 or 8 trays are required, a storage basket cannot be used.

## Material Specifications

### Material Type

Impact-resistant polymer

## Environmental Specifications

### Environmental Space

Below ground | Buried

### Qualification Standards

IEC 61300, 6 m waterhead

## Packaging and Weights

### Packaging quantity

1

### Packaging Type

Box | Carton

### Weight, net

1.9 kg | 4.189 lb

Regulatory Compliance/Certifications

Agency	Classification
CHINA-ROHS	Below maximum concentration value
ISO 9001:2015	Designed, manufactured and/or distributed under this quality management system
REACH-SVHC	Compliant as per SVHC revision on <a href="http://www.commscope.com/ProductCompliance">www.commscope.com/ProductCompliance</a>
ROHS	Compliant
UK-ROHS	Compliant

