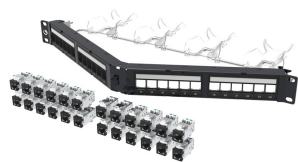


760242564 | CPPA-6A-SDDM-SL-1U-24



Shielded Angled Discrete Distribution Module Panel, Cat 6A, SL, 1U, 24 port, Black

Product Classification

Regional Availability	Australia/New Zealand
Portfolio	CommScope®
Product Type	RJ45 patch panel

General Specifications

ANSI/TIA Category	6A
Cable Type	Shielded
Color	Black
Growth Configuration	Fully loaded
Panel Style	Angled
Rack Type	EIA 19 in
Rack Units	1
Total Ports, quantity	24
Transmission Standards	ANSI/TIA-568.2-D ISO/IEC 11801 Class EA

Dimensions

Height	44.45 mm 1.75 in
Width	482.6 mm 19 in
Depth, with cable management	210.82 mm 8.3 in
Compatible Diameter Over Dielectric, maximum	1.168 mm 0.046 in
Compatible Diameter Over Dielectric, minimum	0.762 mm 0.03 in

Material Specifications

Material Type	High-impact, flame retardant, thermoplastic Powder-coated steel
----------------------	-------------------------------------------------------------------

Environmental Specifications

760242564 | CPPA-6A-SDDM-SL-1U-24

Operating Temperature	-10 °C to +60 °C (+14 °F to +140 °F)
Storage Temperature	-40 °C to +70 °C (-40 °F to +158 °F)
Flammability Rating	UL 94 V-0
Safety Standard	RCM UL cUL

Packaging and Weights

Included	Modular jacks (24)
Packaging quantity	1

Regulatory Compliance/Certifications

Agency	Classification
CHINA-ROHS	Below maximum concentration value
ISO 9001:2015	Designed, manufactured and/or distributed under this quality management system
REACH-SVHC	Compliant as per SVHC revision on www.commscope.com/ProductCompliance
ROHS	Compliant
UK-ROHS	Compliant/Exempted

