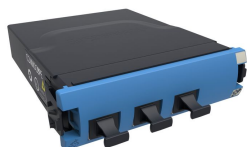


760220400 | 360CM12-2x3-TS

G2 2x3 Singlemode Conversion Module, 3 MPO male ports



Product Classification

Regional Availability	Asia Australia/New Zealand EMEA Latin America North America
Portfolio	CommScope®
Product Type	Fiber module

General Specifications

Functionality	Breakout
Adapters, quantity, front	3
Adapters, quantity, rear	2
Color, front	Blue
Color, housing	Black
Color, rear	Blue
Data Module Type	Standard
Interface, front	MPO
Interface Feature, front	Standard
Interface, rear	MPO
Interface Feature, rear	Male Reduced footprint
Polarity	Method B Enhanced (ULL)
Shuttered	No
Total Fibers, quantity	24
Total Ports, quantity, front	3

Dimensions

Height	27.94 mm 1.1 in
Width	91.44 mm 3.6 in

760220400 | 360CM12-2x3-TS

Depth 109.22 mm | 4.3 in

Optical Specifications

Fiber Mode Singlemode
Fiber Type G.652.D and G.657.A1, TeraSPEED® | OS2
Insertion Loss Change, mating 0.3 dB
Insertion Loss Change, temperature 0.3 dB
Insertion Loss, maximum 1.34 dB

Environmental Specifications

Safety Standard UL

Packaging and Weights

Packaging quantity 1

Regulatory Compliance/Certifications

Agency	Classification
CHINA-ROHS	Below maximum concentration value
ISO 9001:2015	Designed, manufactured and/or distributed under this quality management system
REACH-SVHC	Compliant as per SVHC revision on www.commscope.com/ProductCompliance
ROHS	Compliant
UK-ROHS	Compliant



* Footnotes

Insertion Loss Change, mating Maximum insertion loss change after 500 matings
Insertion Loss Change, temperature Maximum insertion loss change from -10 °C to +60 °C (+14 °F to +140 °F)