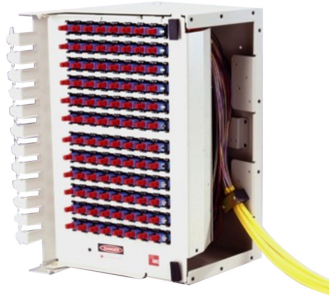


CY1624-000 | MX6-PMB7L4120



OMX Fiber Termination Block, pre-terminated with pigtails, 96 SC/UPC, singlemode, putty white, left oriented

OBSOLETE

This product was discontinued on: December 30, 2018

Product Classification

Regional Availability	EMEA Latin America North America
Product Type	Fiber patch block
Product Brand	OMX600@
Product Series	OMX

General Specifications

Functionality	Patching
Application	Used in OMX-style frames only
Body Style	Left orientation
Color	Putty white
Color, front	Putty white
Growth Configuration	Fully loaded
Interface, front	SC/UPC
Rack Type	OMX
Shelf Movement	Hinged
Total Ports, quantity	96

Dimensions

Height	373.126 mm 14.69 in
Width	203.2 mm 8 in

CY1624-000 | MX6-PMB7L4120

Depth 283.21 mm | 11.15 in

Material Specifications

Finish Powder coated

Material Type Steel

Optical Specifications

Fiber Mode Singlemode

Packaging and Weights

Packaging quantity 1

Regulatory Compliance/Certifications

Agency

CHINA-ROHS

REACH-SVHC

ROHS

UK-ROHS

Classification

Below maximum concentration value

Compliant as per SVHC revision on www.commscope.com/ProductCompliance

Compliant

Compliant

