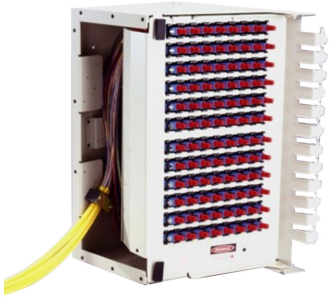


MX6-PMB2R4120-H



OMX Fiber Termination Block, pre-terminated with pigtails, 96 FC/UPC, singlemode, putty white, right oriented

OBSOLETE

This product was discontinued on: **March 1, 2018**

Product Classification

Regional Availability	EMEA Latin America North America
Product Type	Fiber patch block
Product Brand	OMX600@
Product Series	OMX

General Specifications

Functionality	Patching
Application	Used in OMX-style frames only
Body Style	Right orientation
Color	Putty white
Color, front	Putty white
Growth Configuration	Fully loaded
Interface, front	FC/UPC
Rack Type	OMX
Shelf Movement	Hinged
Total Ports, quantity	96

Dimensions

Height	373.126 mm 14.69 in
Width	203.2 mm 8 in

MX6-PMB2R4120-H

Depth 283.21 mm | 11.15 in

Material Specifications

Finish Powder coated

Material Type Steel

Optical Specifications

Fiber Mode Singlemode

Packaging and Weights

Packaging quantity 1