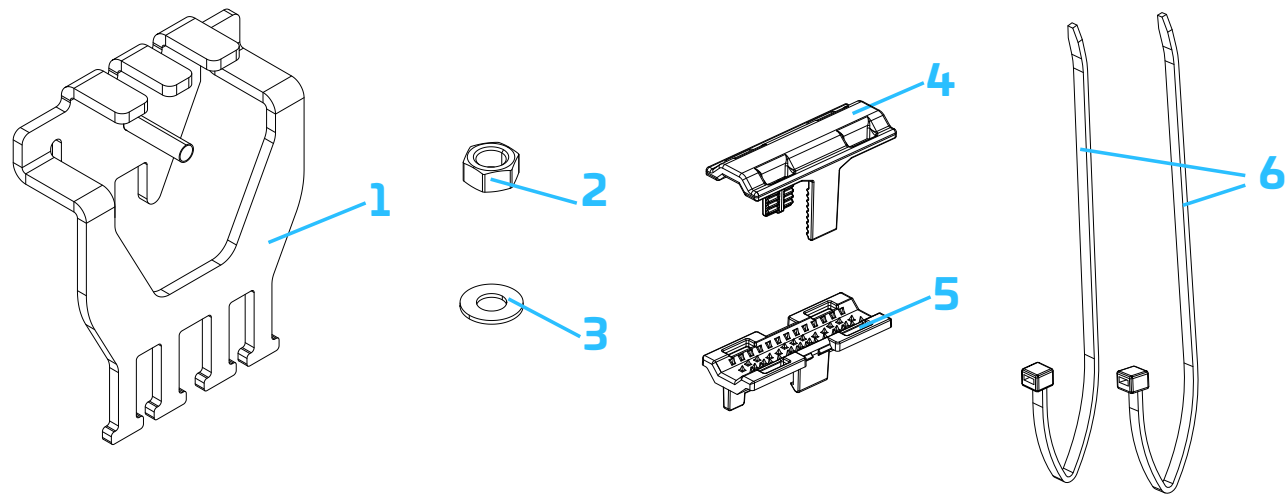


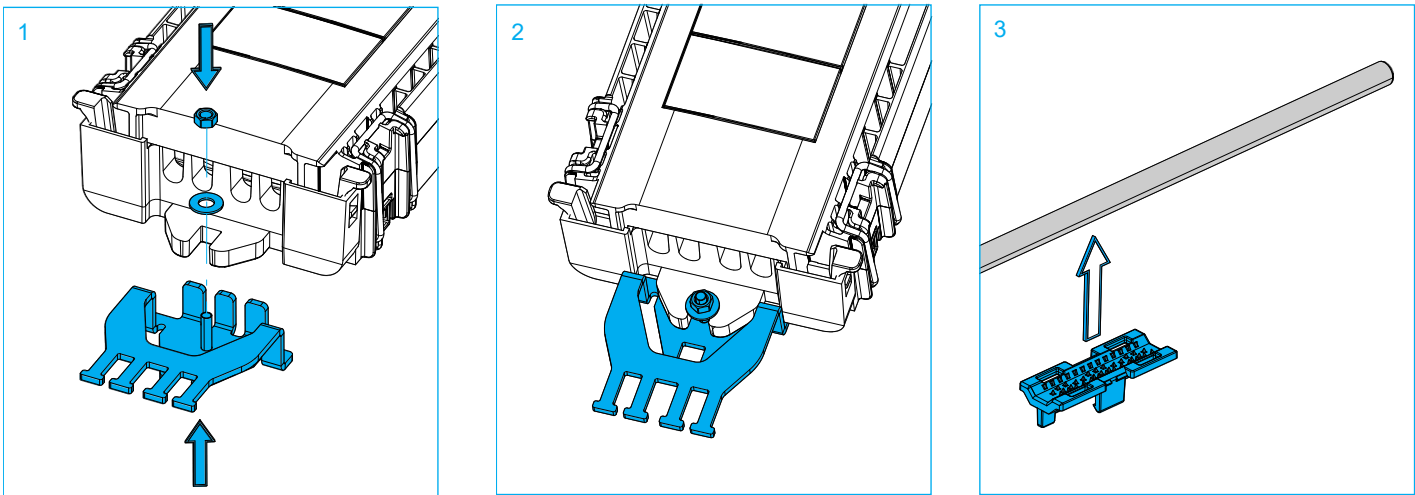
NVX-TR-MT-SM-NN: EXTERNAL FIXATION BRACKET - MICRO TUBE

1 Kit content

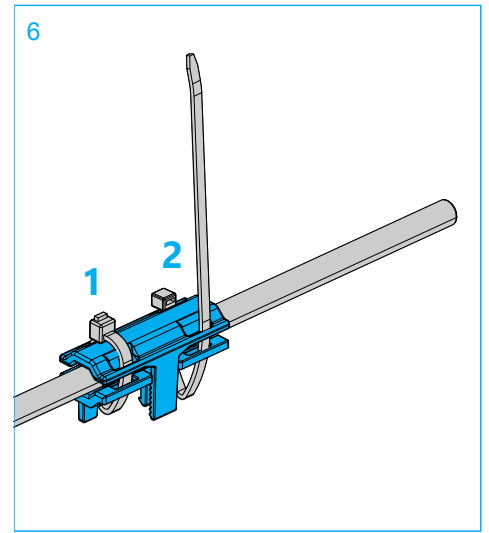
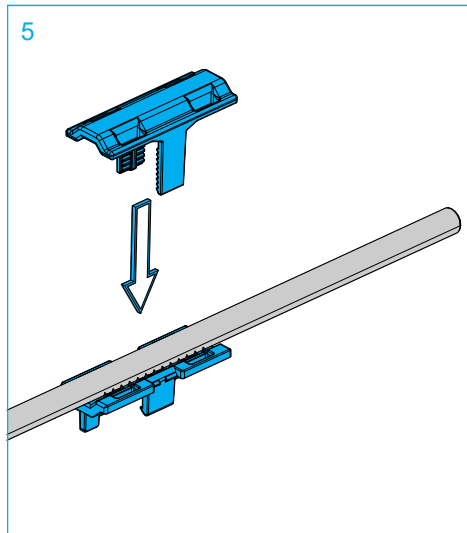
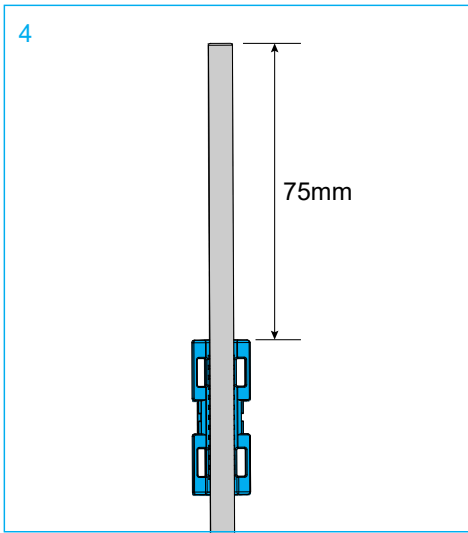


| Number | Description               | Quantity |
|--------|---------------------------|----------|
| 1      | External fixation bracket | 1        |
| 2      | Nut M4                    | 1        |
| 3      | Washer M4                 | 1        |
| 4      | Top retention plate       | 1        |
| 5      | Bottom retention plate    | 1        |
| 6      | Cable tie                 | 2        |

2 Installation

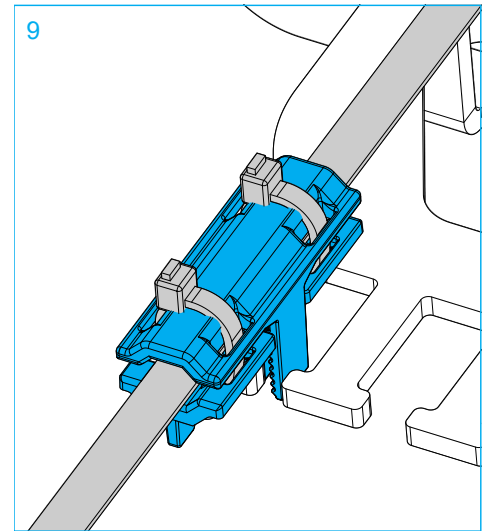
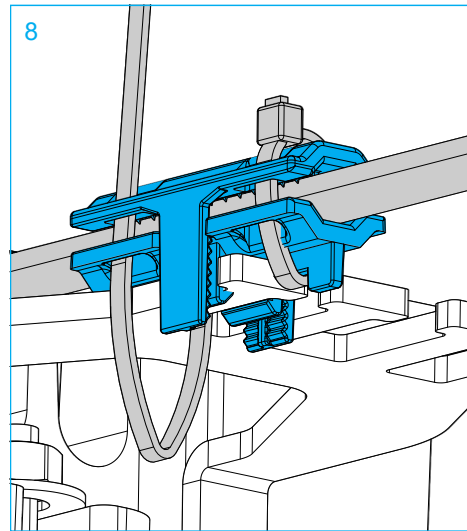
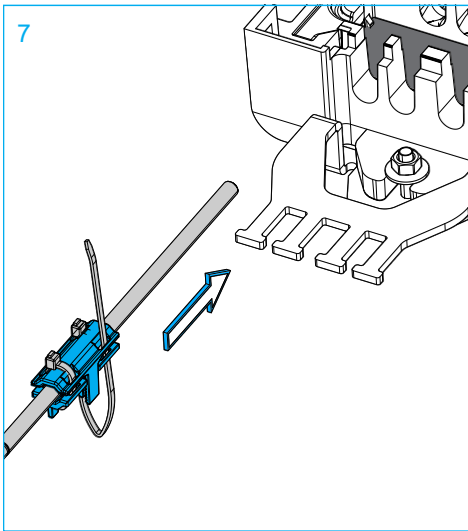


- 1. Install the bracket with nut and washer as shown in the image.
- 2. Image of the installed bracket
- 3. Install the bottom retention plate at the tube.

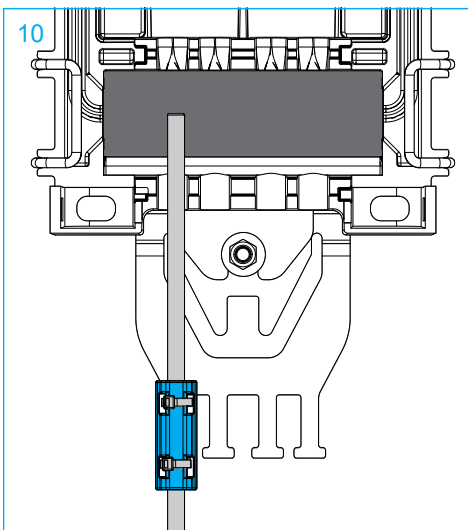


4. The distance from the end of the tube till the bottom retention plate is 75mm.
5. Install the top retention plate.
6. Install cable tie position "1" and install cable tie position "2" leaving a loop as shown in the picture.

**Note:** The tube must be free of scratches, cleaned and sanded under the retention plates.



7. Install the prepared tube on the bracket.
8. Use the snaphooks on the bottom retention plate to install on the bracket.
9. Secure cable tie "2".



10. When the tube and retention bracket is installed correctly the end of the tube should be in the middle of the gel seal.