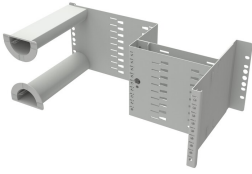


# OCSH-SHELVES

---

## Base Product



## OCSH Shelves for holding Optical OCM6 style modules

The OCSH is a mechanical shelf assembly that accommodates OCM6 style splitter or xWDM modules in a rack or cabinet environment. The shelf is typically used in 15-inch, ETSI or 19-inch active racks or data racks, and is also compatible with CommScope racks and cabinets using the FIST fiber management system.

## Product Classification

<b>Regional Availability</b>	EMEA
<b>Portfolio</b>	CommScope®
<b>Product Type</b>	Shelf for optical modules
<b>Product Series</b>	OCSH

## General Specifications

<b>Application</b>	For use with OCM6 optical modules
<b>Color</b>	Gray

## Material Specifications

<b>Finish</b>	Powder coated
<b>Material Type</b>	Steel

## Packaging and Weights

<b>Included</b>	Mounting hardware
-----------------	-------------------