

## COMMSCOPE® DIN rail adapter for SMB

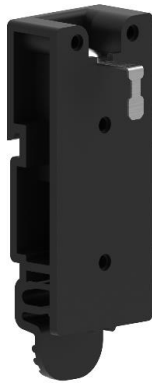
### 1. General product information

This instruction sheet covers the proper use and maintenance of DIN rail adapter for SMB that shall mount on a standard 35mm DIN rail.

Ordering information is listed below.

MID	PRODUCT NM
760258274	DIN RAIL ADAPTER, FTP, SMB-1P
760258275	DIN RAIL ADAPTER, UTP, SMB-1P

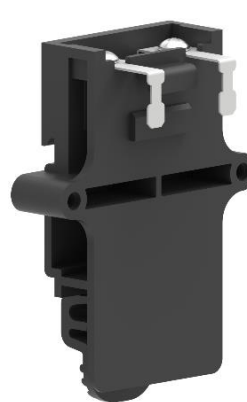
MID	PRODUCT NM
760258276	DIN RAIL ADAPTER, FTP, SMB-2P
760258277	DIN RAIL ADAPTER, UTP, SMB-2P



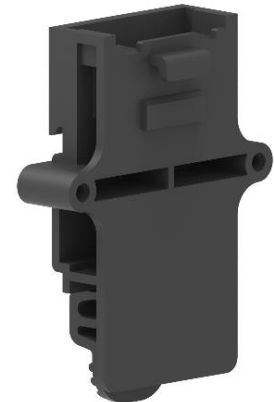
760258274  
FOR SMB-1P FTP



760258275  
FOR SMB-1P UTP



760258276  
FOR SMB-2P FTP



760258277  
FOR SMB-2P UTP

Separately orderable items—SMB List

MID	Product NM	Compatible Adapter MID
760246267	1 PORT BLACK	760258274 760258275
760248521	1 PORT ELEC WHITE	
760248522	1 PORT GRAY	
760248523	1 PORT PROWHITE	
760248524	1 PORT LIGHT ALMOND	
760254710	1 PORT ELECTRIC IVORY	

MID	Product NM	Compatible Adapter MID
760246268	2 PORT BLACK	760258276 760258277
760248525	2 PORT ELEC WHITE	
760248526	2 PORT GRAY	
760248527	2 PORT PROWHITE	
760248528	2 PORT LIGHT ALMOND	
760254711	2 PORT ELECTRIC IVORY	

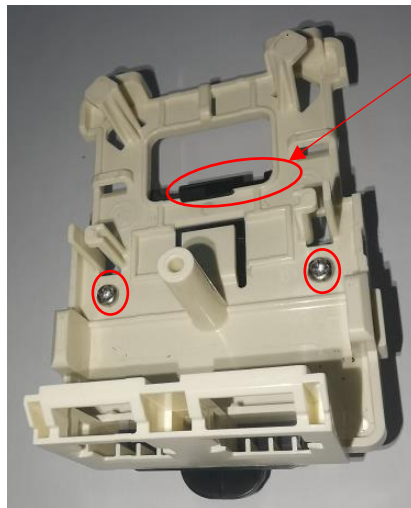
**Note:** Please check the DIN rail adapter compatible MID carefully before you place the order.  
FTP type adapter with the grounding strip.  
Contact with local COMMSCOPE representative for further detail info.

## 2. Installation steps

### Step 1 – DIN rail adapter and SMB installation

- 1.1 Using two screws to fix DIN rail adapter to SMB base, need to remove the SMB cover if it is already installed.

Notes: For further information related to SMB, refer to relevant Instruction sheet.



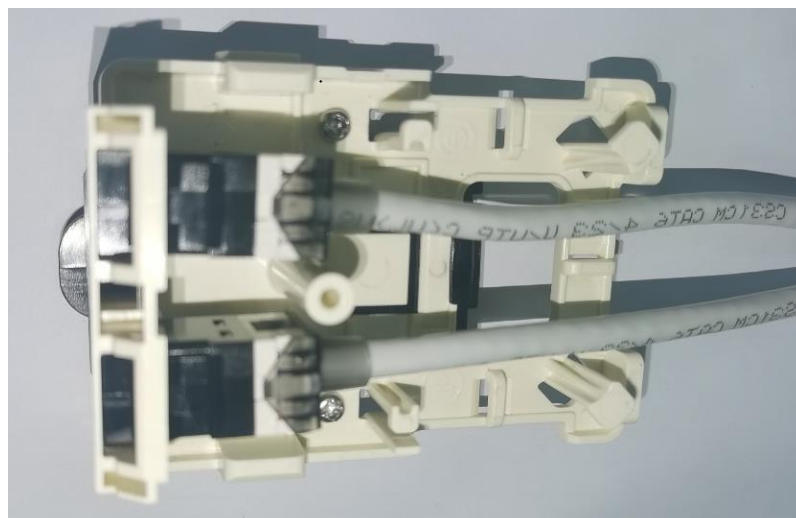
Hook



\*SMB opening and adapter tab align at the same end

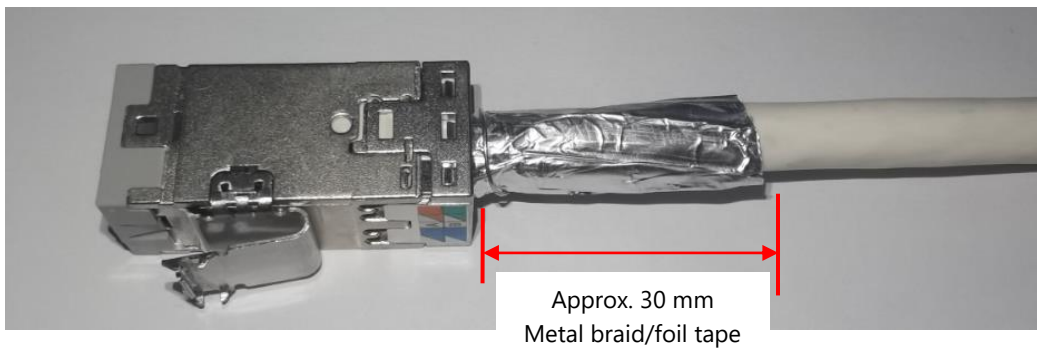
- 1.2 Terminate the jack, then install jack to SMB.

Notes: For further information related to different jack type termination, refer to relevant Instruction sheet.



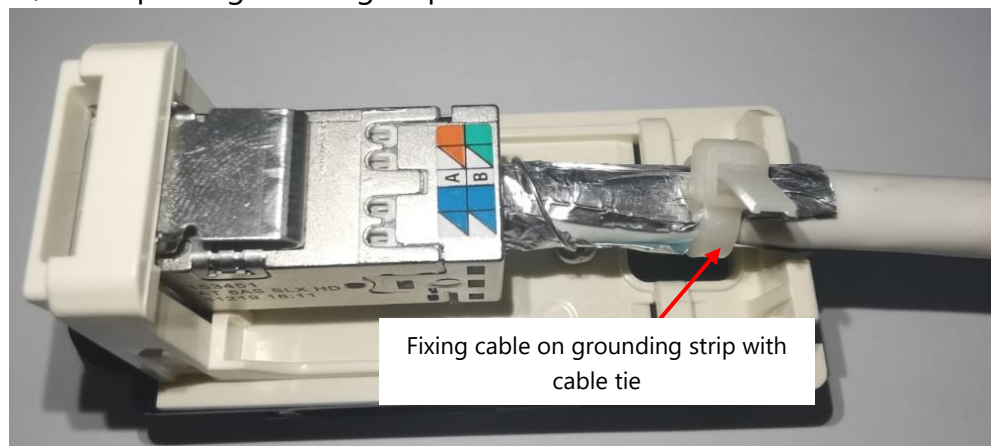
**\*For FTP jack only**

--Arrange braid/ foil tape as shown--

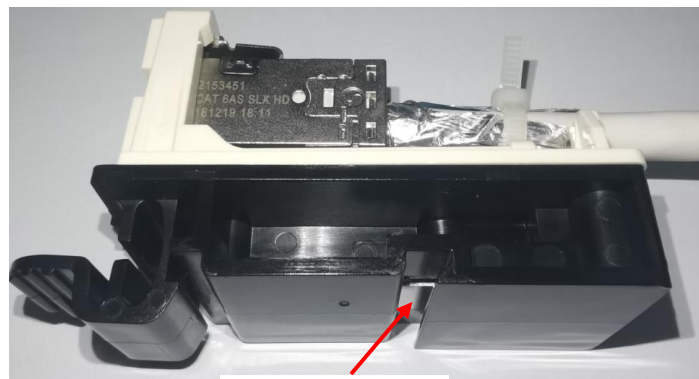


Jack shown only as reference.

--Fixing cable/ foil tape on grounding strip with cable tie



--Grounding connection

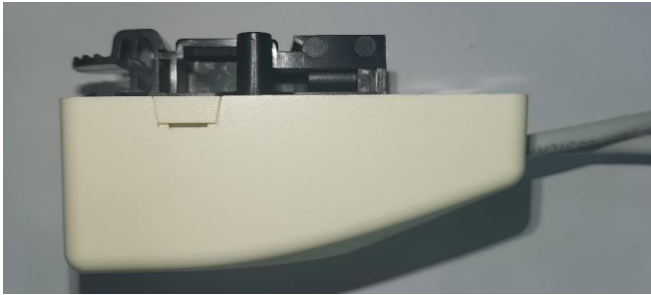


Trim excess tie-wrap end.

Grounding connection: Cable tie around metal braid (or foil tape) + Grounding strip contact. Grounding strip that connects to the braid or foil is connected to another grounding which completes the ground connection to the metal DIN rail.

### 1.3 Install the SMB cover.

Notes: For further information related to SMB, refer to relevant Instruction sheet.



## Step 2 – DIN rail adapter installation and Removal

### 2.1 Install on DIN rail.

Position the adapter at an angle to align hook with din rail on the top side, then engage the bottom tab into the DIN rail by pushing the SMB cover.



### 2.2 Remove adapter from DIN rail.



Pull the tab at the bottom of DIN rail adapter.

## 3. Revision history

- Rev. A – Initial release.