

4

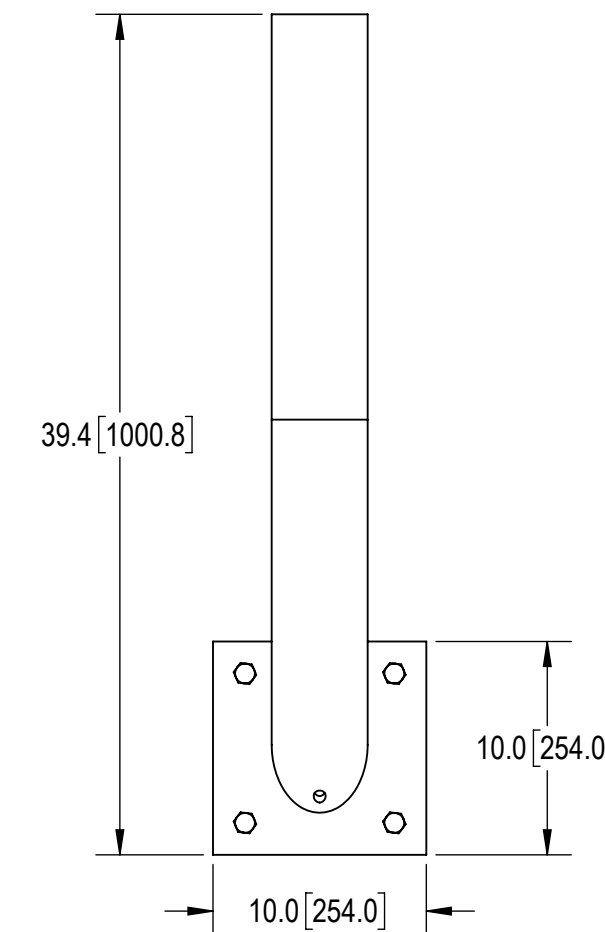
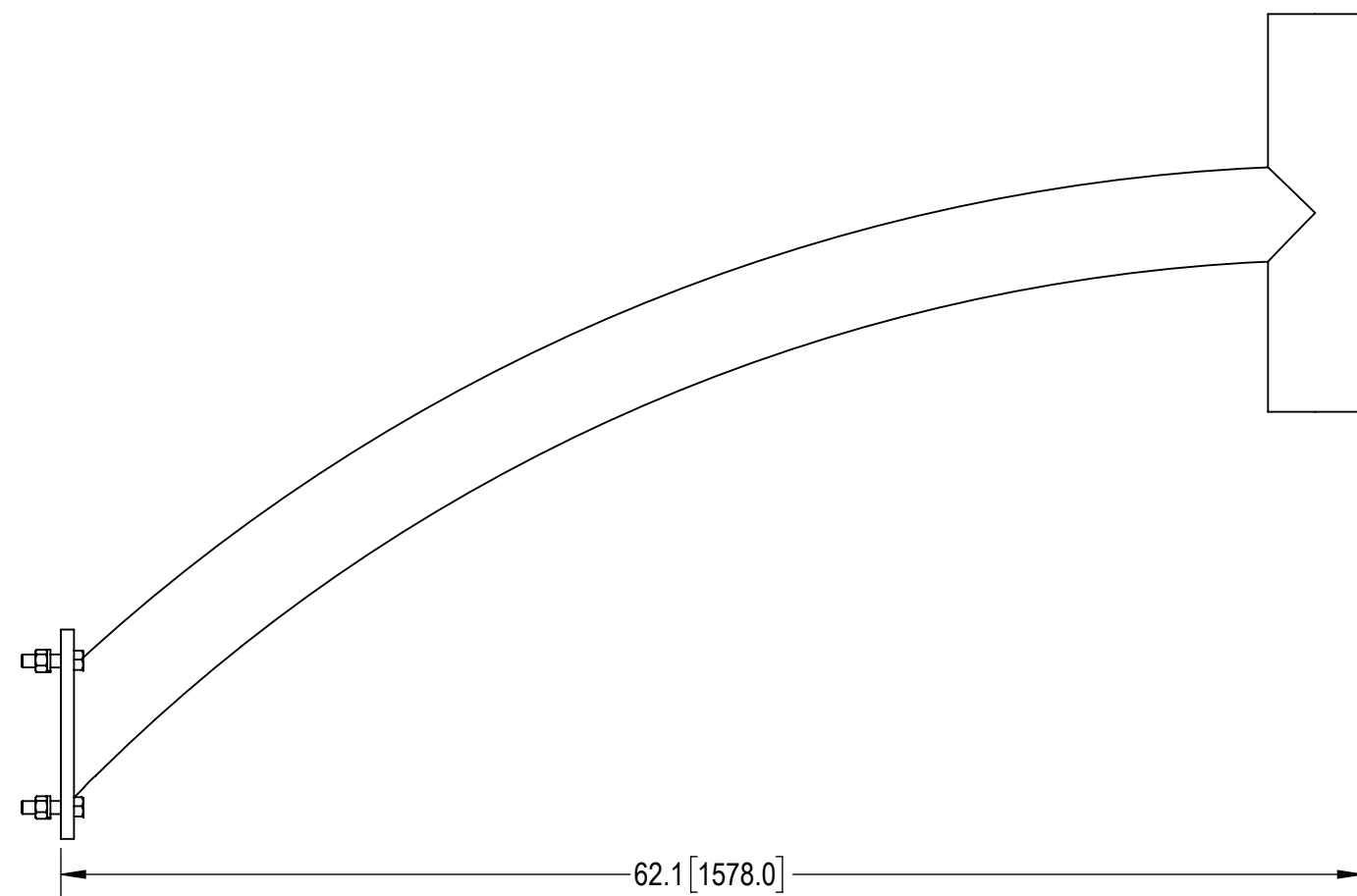
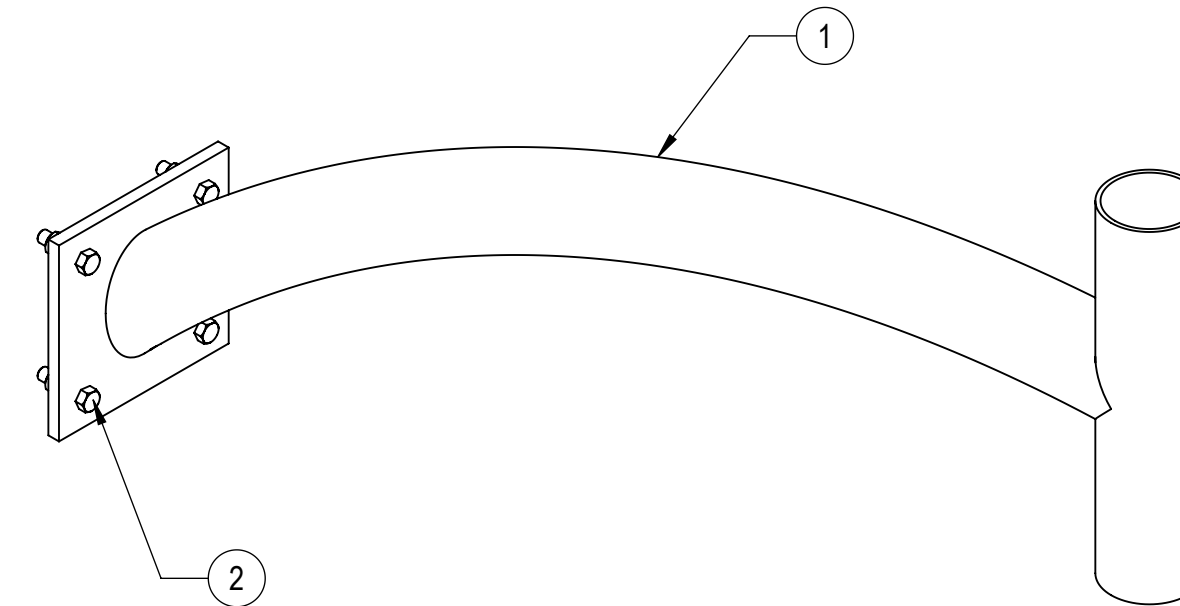
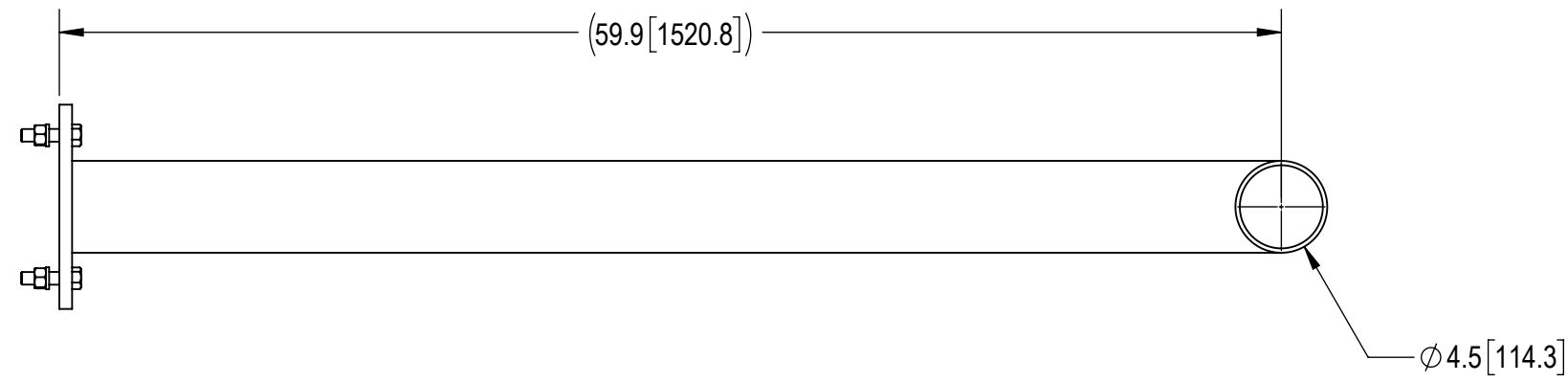
3

2

1

- 1.0 GENERAL NOTES
  - 1.1 ALL METRIC DIMENSIONS ARE IN BRACKETS [X.X]
  - 1.2 FOR PATENT INFO: <https://www.cs-pat.com>
- 2.0 DESIGN NOTES
- 3.0 MANUFACTURING/SPECIAL REQUIREMENTS
  - 3.1 TIGHTEN ALL BOLTS SECURING FLAT PLATES BY THE TURN-OF-NUT METHOD. TIGHTEN ALL U-BOLTS USING TURN-OF-NUT METHOD WITH ATTENTION TO LEAVE EQUAL DISTANCE AND EQUAL FORCE ON EACH LEG OF THE U-BOLT.
- 4.0 TEST
- 5.0 PACKAGING
  - 5.1 PACKAGING SHALL MEET COMMSCOPE REQUIREMENTS PER DOCUMENT IS-PL-3005
  - 5.2 PRINTED DOCUMENT TO BE PLACED INSIDE POLYBAG AND THEN IN SHIPPING CONTAINER
  - 5.3 EXTRA HARDWARE MAY BE SUPPLIED, BAGGED AND SHIPPED

REVISIONS			
REV.	DESCRIPTION	DATE	APPROVED
A	INITIAL RELEASE	LAP 23MAR01	TP
B	UPDATE MT197C.01 AND TOLERANCE BLOCK	MSM 17JUN09	TP
C	UPDATED DRAWING TO NEW FORMAT	LS1146 09OCT24	BCROSS 40206191CMO



**COMMSCOPE, INC. OF NORTH CAROLINA**

TOLERANCES		SAP MATERIAL MASTER
1 PLACE .X[X] ± 0.12[3.0]	3 PLACE .XXX[X] ± 0.030[0.8]	<b>MT-197-C</b>
2 PLACE .XX[X] ± 0.06[1.5]	ANGLES ± 2°	

FINISH	MATERIAL
--------	----------

UNLESS OTHERWISE SPECIFIED DIMENSIONS ARE IN INCHES INTERPRET PER ANSI Y 14.5M-1994	NAME	DATE	TITLE
	CE LAP	23MAR01	<b>CURVED SINGLE POLE SPPT ARM,RING MNTS</b>
	RW LS1146	10/10/2024	
	AD YMENG	10/11/2024	
	RE YMENG	10/11/2024	
ECN 40206191CMO			
SCALE	DOCUMENT NO.	<b>MT-197-C</b>	
<b>1:8</b>			

DENSITY	84.94	lbs/in <sup>3</sup>
MASS	84.94	lbs
VOLUME	301.42	in <sup>3</sup>
SURFACE AREA	2518.89	in <sup>2</sup>
HEIGHT	39.4"	
LENGTH	10.0"	
WIDTH	62.1"	

COMPONENT PART NUMBERS PROVIDED FOR ASSEMBLY PURPOSES;  
INDIVIDUAL COMPONENTS MAY BE SHIPPED AS PARTS WITHIN AN INCLUDED KIT.

ITEM	PART NO.	DESCRIPTION	QTY.	WEIGHT	NOTE NO.
1	MT197C01	CURVED RING MOUNT ARM	1	83.28 LBS	
2	GB-0524A	5/8" X 2-1/2" GALV BOLT KIT (A325)	4	0.30 LBS	

© 2024 CommScope, Inc. Confidential

C	Auth Group	INSL	MODEL			DRAWING			SHEET 1 OF 1
	VERSION	STATUS	REVISION	VERSION	STATUS	REVISION			
	00	RE	C	00	RE	C			

4

3

2

1