

4

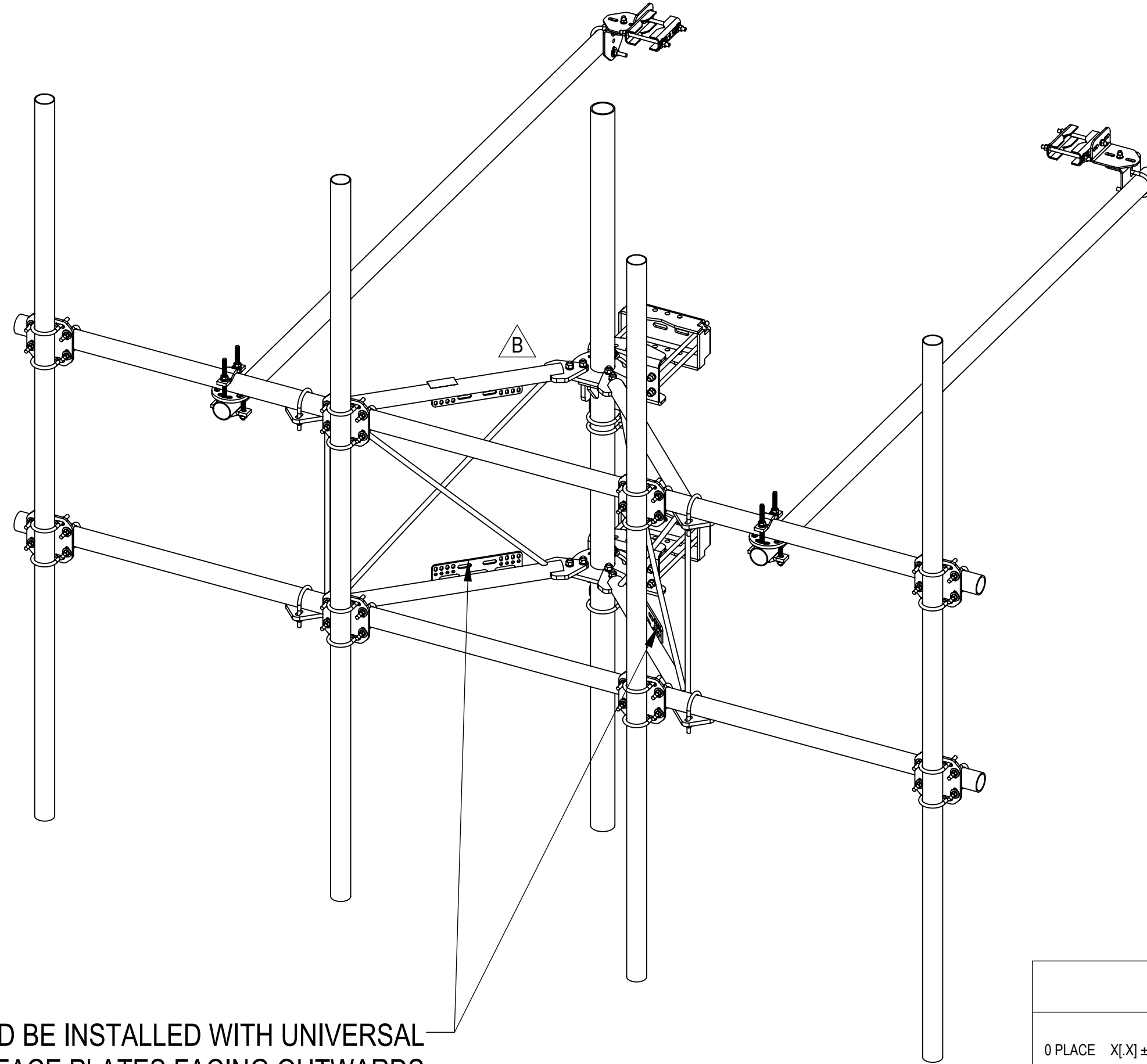
3

2

1

- 1.0 GENERAL NOTES
  - 1.1 ALL METRIC DIMENSIONS ARE IN BRACKETS [X.XX]
  - 1.2 FOR PATENT INFO: <https://www.cs-pat.com>
- 2.0 DESIGN NOTES
  - 2.1 ANY HAZARDS OR OBSTRUCTIONS TO THE CLIMBING FACILITY AND SAFETY CLIMB MUST BE IDENTIFIED PRIOR TO INSTALLING THE APPURTENANCE. ADDITIONAL PRODUCTS MAY BE REQUIRED TO MAINTAIN THE INTEGRITY OF THE SAFETY CLIMB. DURING INSTALLATION, TEMPORARY AND/OR PERMANENT PRECAUTIONARY MEASURES SHOULD BE TAKEN TO PRESERVE THE CLIMBING FACILITY AND/OR SAFETY CLIMB.
  - 2.2 UP TO 5.0° TAPER AVAILABLE ON MODELS THAT SUPPORT ADJUSTMENT.
- 3.0 MANUFACTURING/SPECIAL REQUIREMENTS
  - 3.1 TIGHTEN ALL BOLTS SECURING FLAT PLATES BY THE TURN-OF-NUT METHOD. TIGHTEN ALL U-BOLTS USING TURN-OF-NUT METHOD WITH ATTENTION TO LEAVE EQUAL DISTANCE AND EQUAL FORCE ON EACH LEG OF THE U-BOLT.
- 4.0 TEST
- 5.0 PACKAGING
  - 5.1 PACKAGING SHALL MEET COMMSCOPE REQUIREMENTS PER DOCUMENT IS-PL-3005.
  - 5.2 PRINTED DOCUMENT TO BE PLACED INSIDE POLYBAG AND THEN IN SHIPPING CONTAINER.
  - 5.3 EXTRA HARDWARE MAY BE SUPPLIED, BAGGED AND SHIPPED.

REVISIONS			
REV.	DESCRIPTION	DATE	APPROVED
A	INITIAL RELEASE	JL1183 24MAY24	CB1094 40196505CMO
B	V-ARM SFG2292-00 (ITEM 2) WAS SFG2278; SHEET6: ADDED V-ARM DETAIL VIEW	JL1183 12JUL24	CB1094 40200155CMO



SHOULD BE INSTALLED WITH UNIVERSAL  
INTERFACE PLATES FACING OUTWARDS

<b>COMMSCOPE, INC. OF NORTH CAROLINA</b>																			
TOLERANCES		SAP MATERIAL MASTER																	
0 PLACE	X[X] ± 0.25[6.3]	2 PLACE	.XX[X] ± 0.06[1.5]																
1 PLACE	.X[X] ± 0.12[3.0]	ANGLES	± 2°																
FINISH		MATERIAL																	
		PG,SF,13'FP,(4)120"AP																	
UNLESS OTHERWISE SPECIFIED DIMENSIONS ARE IN INCHES INTERPRET PER ANSI Y 14.5M-1994		<table border="1"> <tr><th>NAME</th><th>DATE</th><th>TITLE</th></tr> <tr><td>CE JL1183</td><td>24MAY24</td><td></td></tr> <tr><td>RW JL1183</td><td>07/15/2024</td><td></td></tr> <tr><td>AD CB1094</td><td>07/18/2024</td><td></td></tr> <tr><td>RE YMENG</td><td>08/05/2024</td><td></td></tr> </table>	NAME	DATE	TITLE	CE JL1183	24MAY24		RW JL1183	07/15/2024		AD CB1094	07/18/2024		RE YMENG	08/05/2024		SCALE	DOCUMENT NO.
NAME	DATE	TITLE																	
CE JL1183	24MAY24																		
RW JL1183	07/15/2024																		
AD CB1094	07/18/2024																		
RE YMENG	08/05/2024																		
		1:16	SFG22RHDX-13-4-120																
ECN 40200155CMO		SIZE	Auth Group INSL																
		MODEL	DRAWING																
		VERSION	STATUS																
		REVISION	VERSION																
		01	RE																
		RE	B																
		01	RE																
		B	B																
		SHEET	1 OF 7																

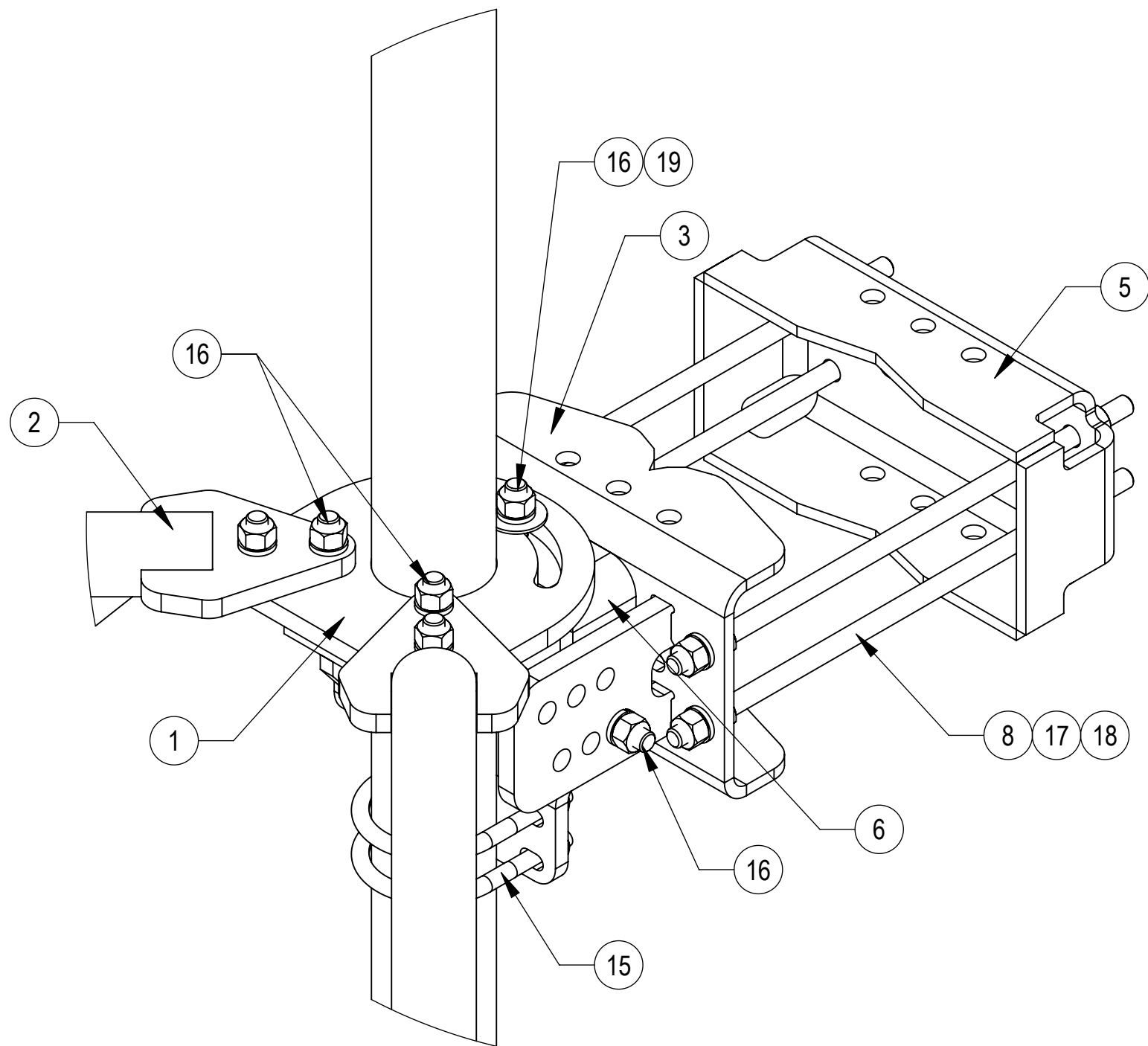
DENSITY	783.30	lbs/in <sup>3</sup>
MASS	783.30	lbs
VOLUME	2764.62	in <sup>3</sup>
SURFACE AREA	29841.30	in <sup>2</sup>
HEIGHT	120"	
LENGTH	156"	
WIDTH	120"	

4

3

2

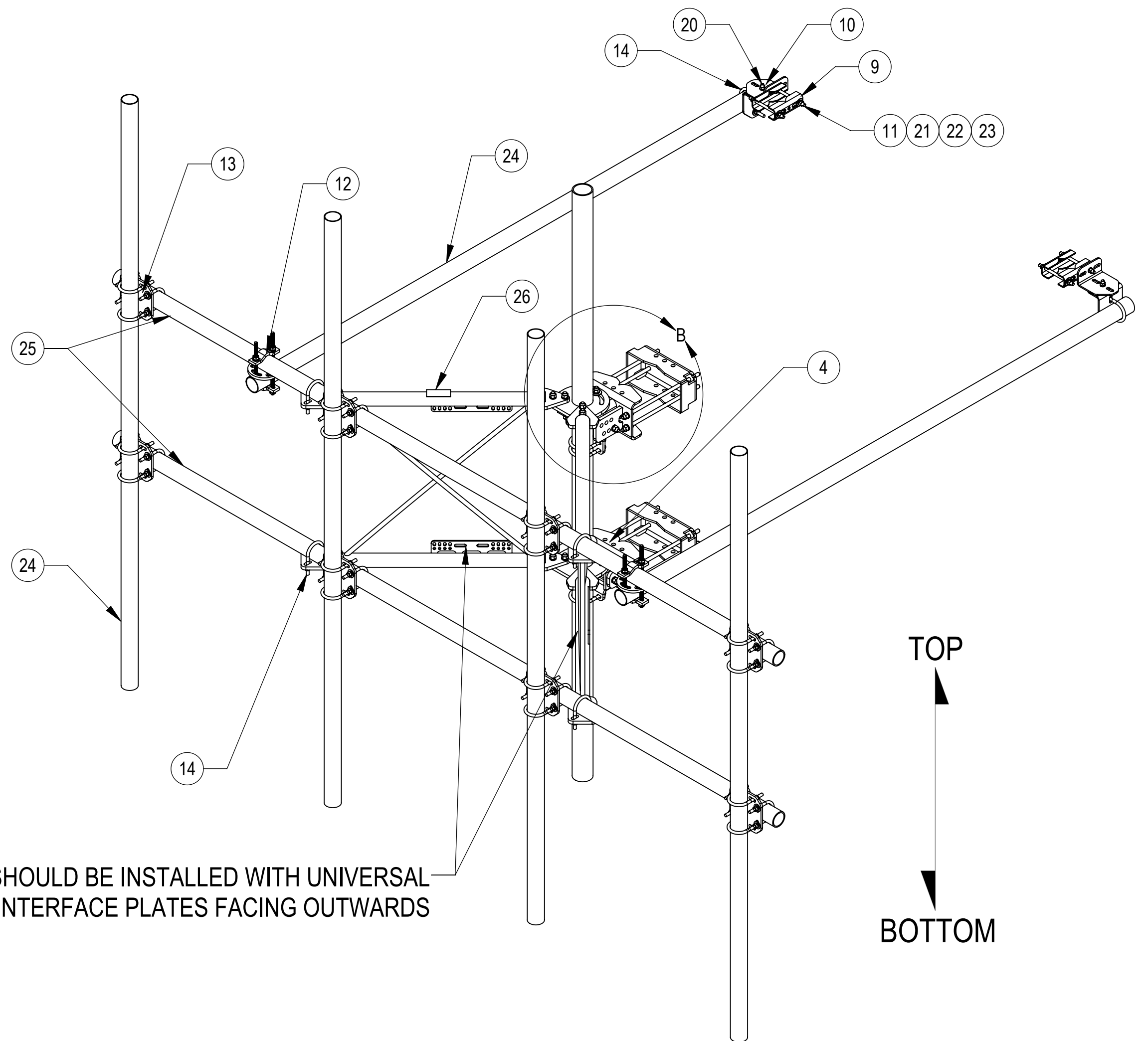
1



DETAIL B  
SCALE 1 : 4

COMPONENT PART NUMBERS PROVIDED FOR ASSEMBLY PURPOSES;  
INDIVIDUAL COMPONENTS MAY BE SHIPPED AS PARTS WITHIN AN INCLUDED KIT.

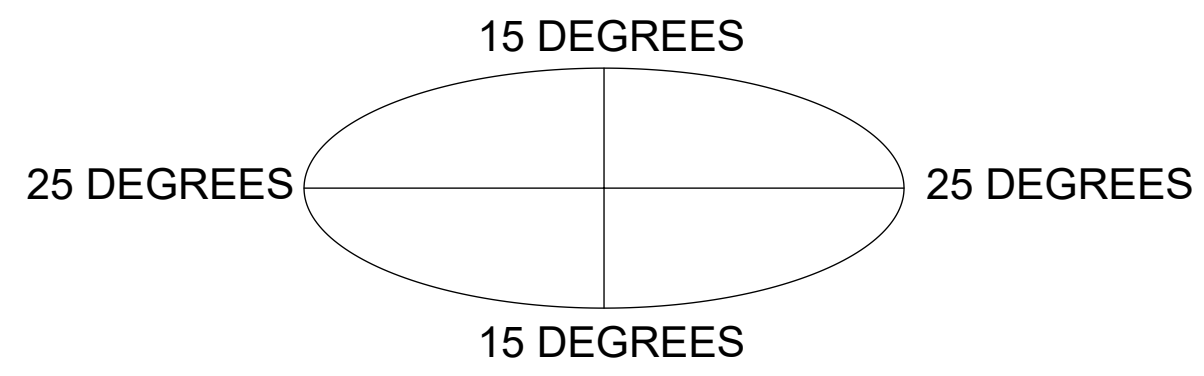
ITEM	PART NO.	DESCRIPTION	QTY.	WEIGHT	NOTE NO.
1	SFG2204	WELDMENT, BACK VERTICAL ARM MOUNT	1	97.29 LBS	
2	SFG2292-00	WELDMENT, V-ARM, SECTOR FRAME 22	2	49.69 LBS	
3	SFG2380	WELDMENT, HD, TOP TAPER BRACKET	1	22.78 LBS	
4	SFG2381	WELDMENT, HD, LOWER TOWER LEG BRACKET	1	17.42 LBS	
5	SFG2289	G2 RRU BACK CLAMP, HD	2	18.65 LBS	
6	SFG2386	WELDMENT, SFG2 AZIMUTH BRACKET	1	10.07 LBS	
7	SFG2397-00	WELDMENT, G23 AZIMUTH BRACKET	1	7.94 LBS	
8	MT-382-18	5/8" X 18" THREADED ROD	8	1.43 LBS	
9	SAB01	FORMED CLAMP	4	1.35 LBS	
10	XAU01	ANGLE, CROSSOVER, 1.9-3.5" X 1.9-3.5" OD	4	2.98 LBS	
11	MT-379-8	1/2" X 8" GALV THREADED ROD	4	0.45 LBS	
12	XP-R	CROSSOVER PLATE, ROUND, UP TO 3.5" OD	2	6.20 LBS	
13	XP-2525	CROSSOVER PLATE KIT, 2-7/8 OD X 2-7/8 OD	8	8.37 LBS	
14	GUB-4352	1/2" X 3" X 5-1/4" GALV U-BOLT	6	0.71 LBS	
15	GUB-4355	1/2" X 3-5/8" X 5" GALV U-BOLT	3	0.71 LBS	
16	GB-05225	5/8" X 2-1/4" GALV BOLT KIT	14	0.28 LBS	
17	GN-05	5/8" GALV HEX NUT	24	0.08 LBS	
18	GWL-05	5/8" GALV LOCK WASHER	16	0.03 LBS	
19	GWF-05	5/8" GALV FLAT WASHER, 1.7OD	2	0.06 LBS	
20	GB-04145	1/2" X 1-1/2" GALV BOLT KIT	2	0.13 LBS	
21	GN-04	1/2" GALV HEX NUT	10	0.04 LBS	
22	GWL-04	1/2" GALV LOCK WASHER	10	0.01 LBS	
23	GWF-04	1/2" GALV FLAT WASHER	8	0.04 LBS	
24	MT546120120	PIPE, 2.875"OD X 120"	6	35.44 LBS	
25	MT546156	2.875" O.D. X 156" PIPE	2	75.58 LBS	
26	SFG2295	LABEL, SFG22RHDX	1	0.04 LBS	



SHOULD BE INSTALLED WITH UNIVERSAL  
INTERFACE PLATES FACING OUTWARDS

**ALLOWABLE TIEBACK ANGLE**

± 15 DEGREES VERTICAL  
± 25 DEGREES HORIZONTAL



COMMSCOPE, INC. OF NORTH CAROLINA

TITLE				
PG,SF,13'FP,(4)120"AP				
SIZE	SCALE	DOCUMENT NO.		
C	1:16	SFG22RHDX-13-4-120		
DRAWING				SHEET
VERSION	STATUS	REVISION	2 OF 7	
01	RE	B		

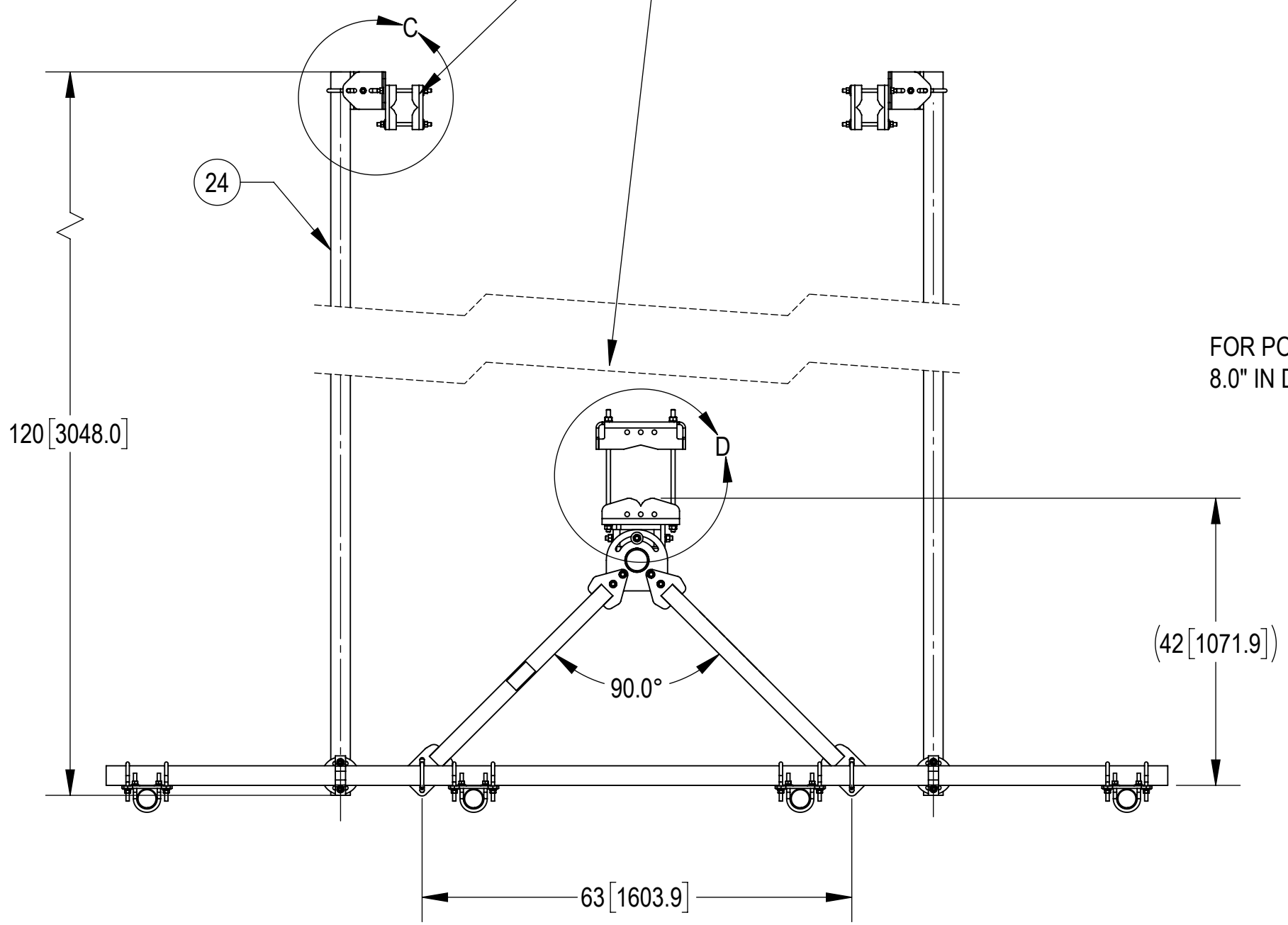
4

3

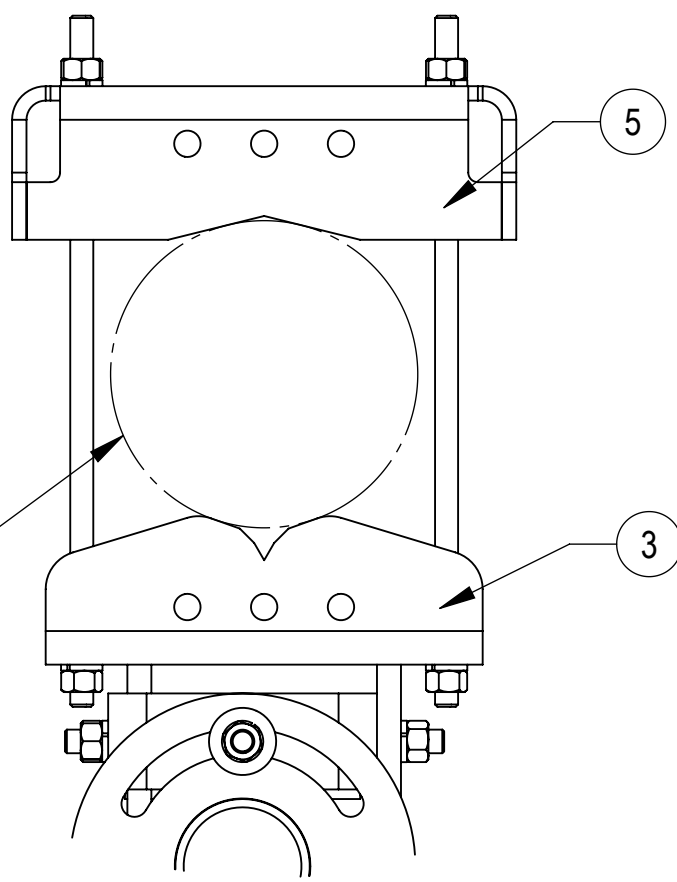
2

1

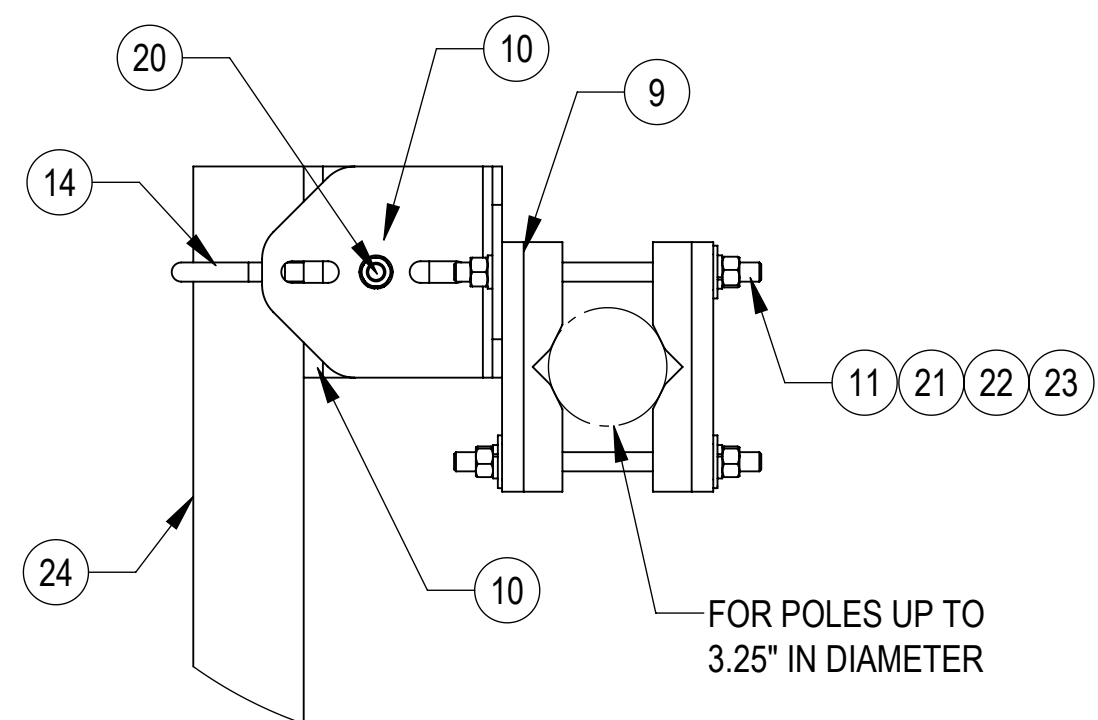
TIEBACK MUST BE CONNECTED TO A RIGID MEMBER THAT PROVIDES ADEQUATE SUPPORT WITHIN THE LIMITS NOTED IN THE TIEBACK ANGLE RANGE DETAIL. UNLESS APPROVED BY ENGINEER OF RECORD. SPINE STEM OF NEIGHBORING MOUNT IS ACCEPTABLE.



FOR POLES UP TO 8.0" IN DIAMETER

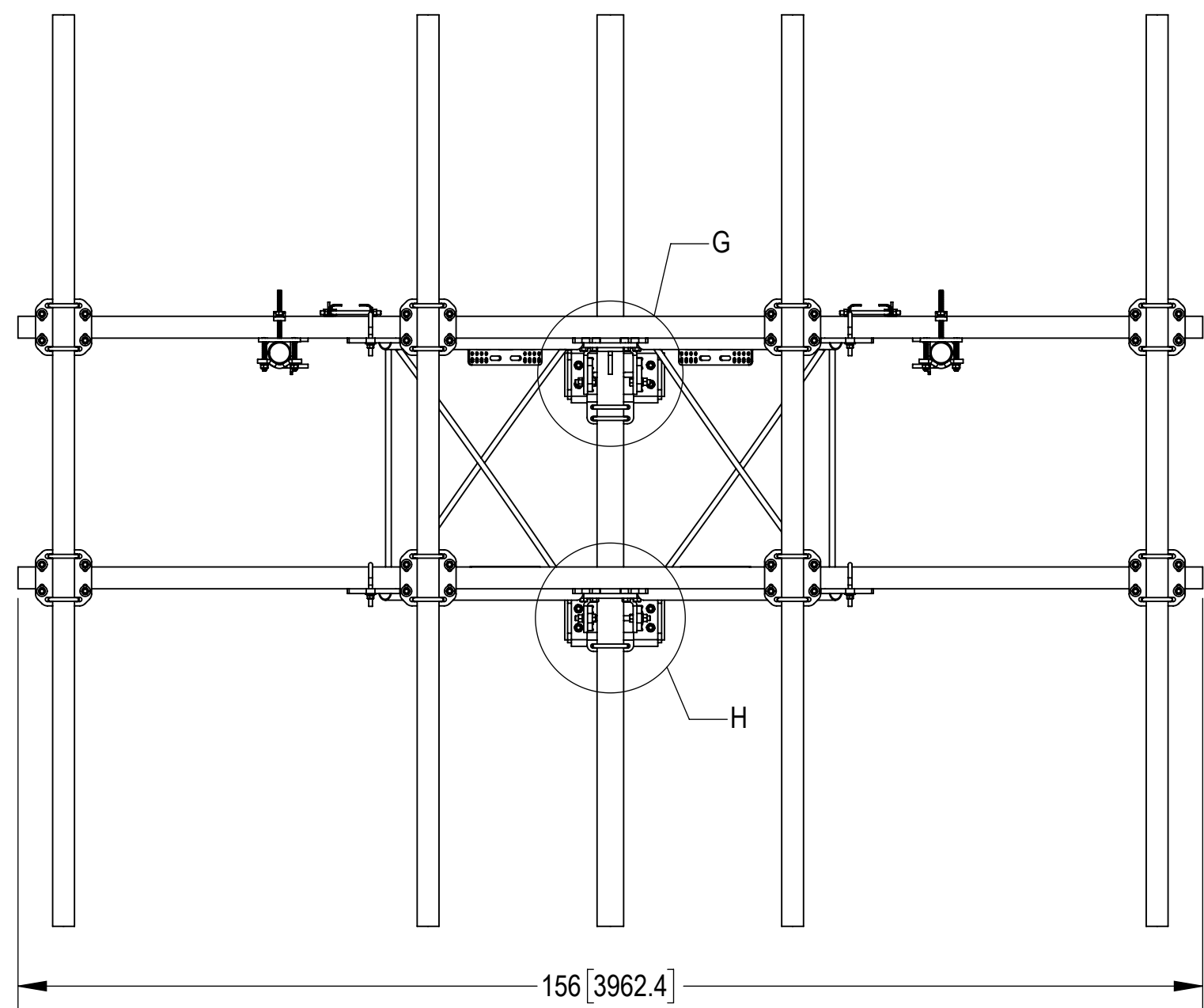
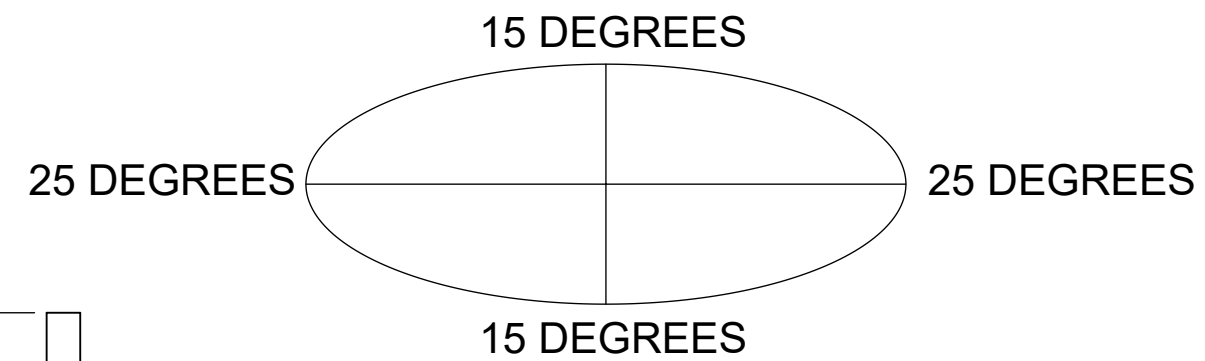


DETAIL D  
SCALE 1 : 5

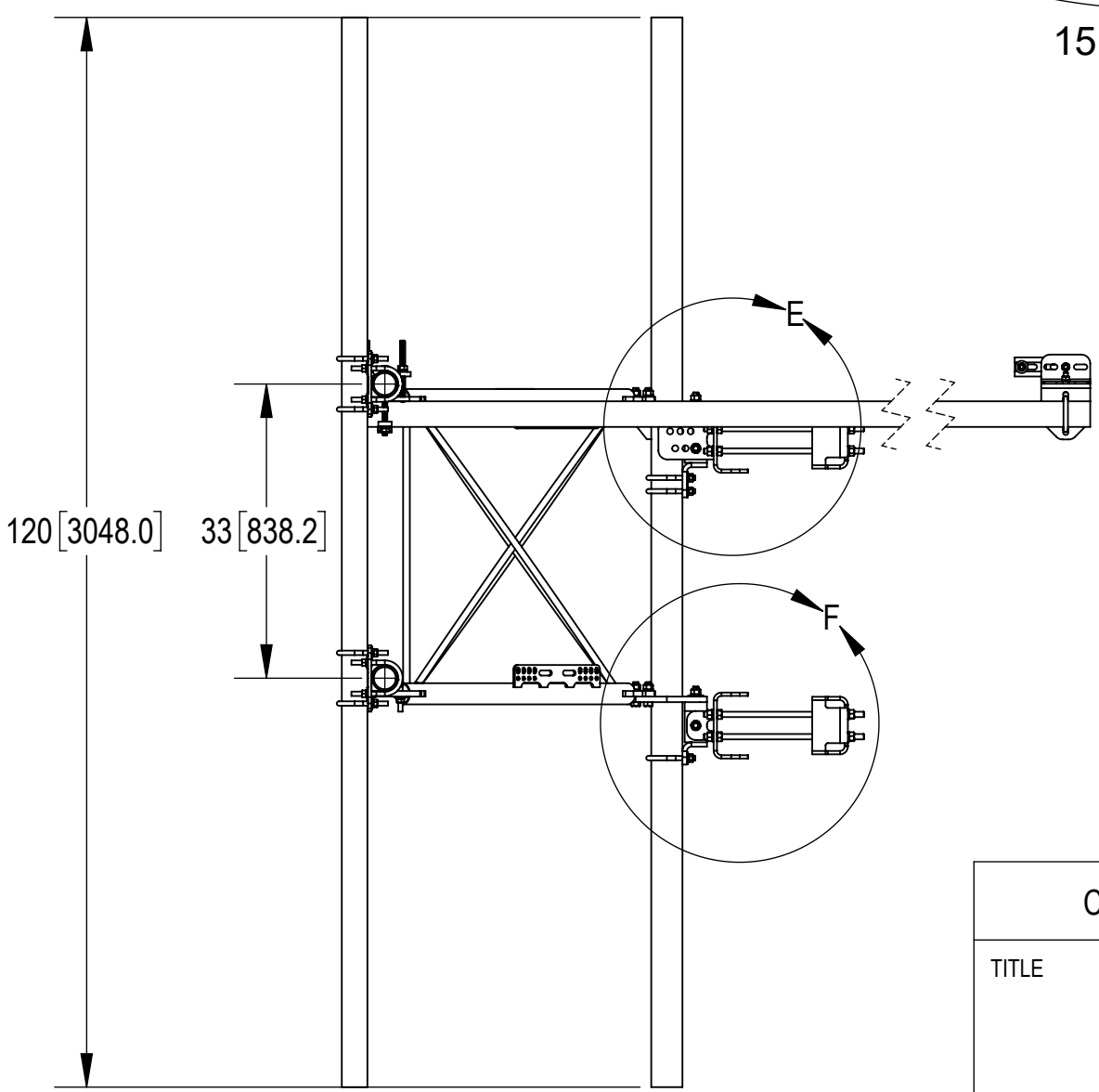


DETAIL C  
SCALE 1 : 5

**ALLOWABLE TIEBACK ANGLE**  
± 15 DEGREES VERTICAL  
± 25 DEGREES HORIZONTAL



TOP  
↑  
↓  
BOTTOM



COMMScope, INC. OF NORTH CAROLINA

TITLE  
PG,SF,13'FP,(4)120"AP

SIZE <b>C</b>	SCALE <b>1:20</b>	DOCUMENT NO. SFG22RHDX-13-4-120
------------------	----------------------	------------------------------------

DRAWING	VERSION	STATUS	REVISION	SHEET 3 OF 7
	01	RE	B	

4

3

2

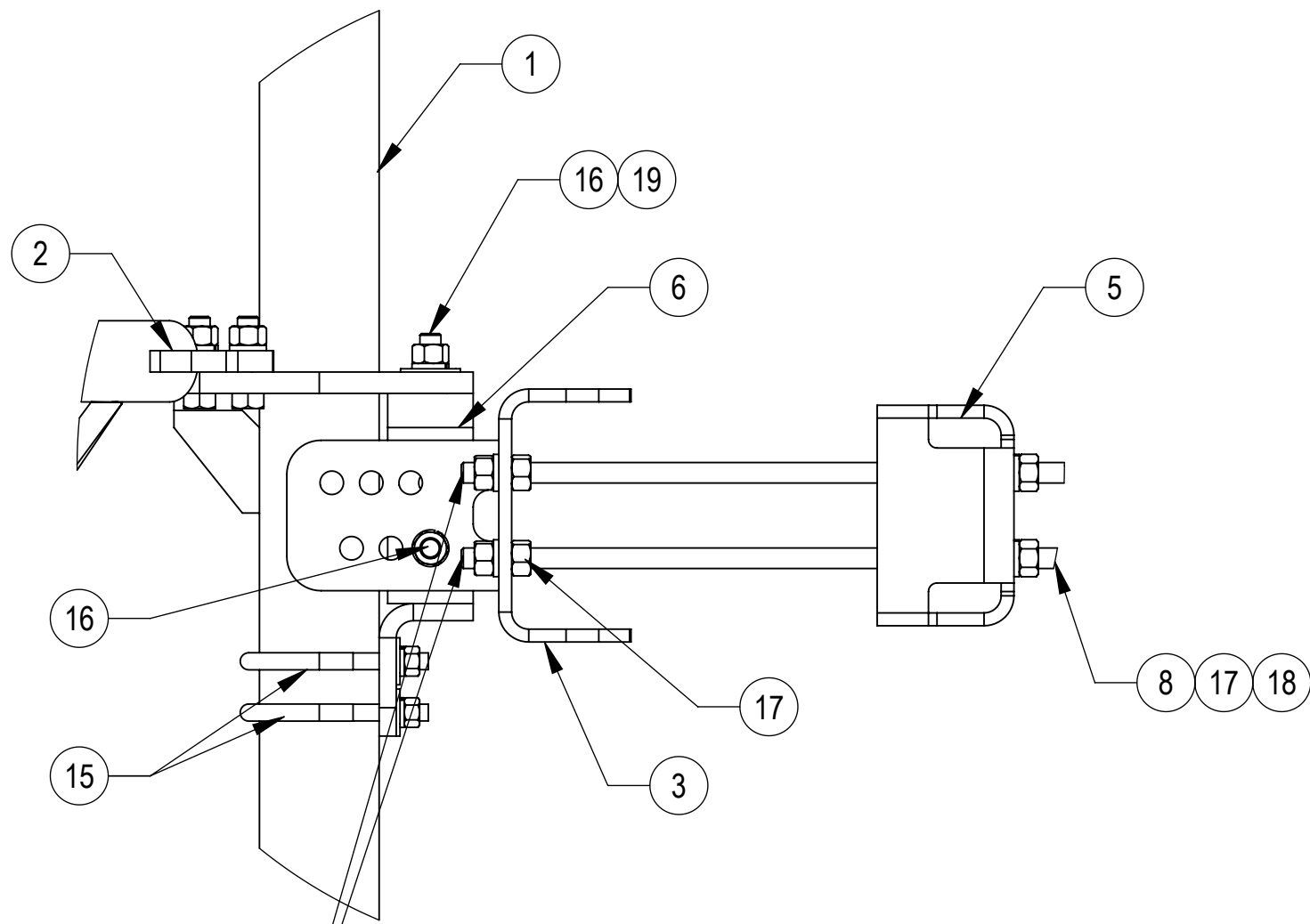
1

4

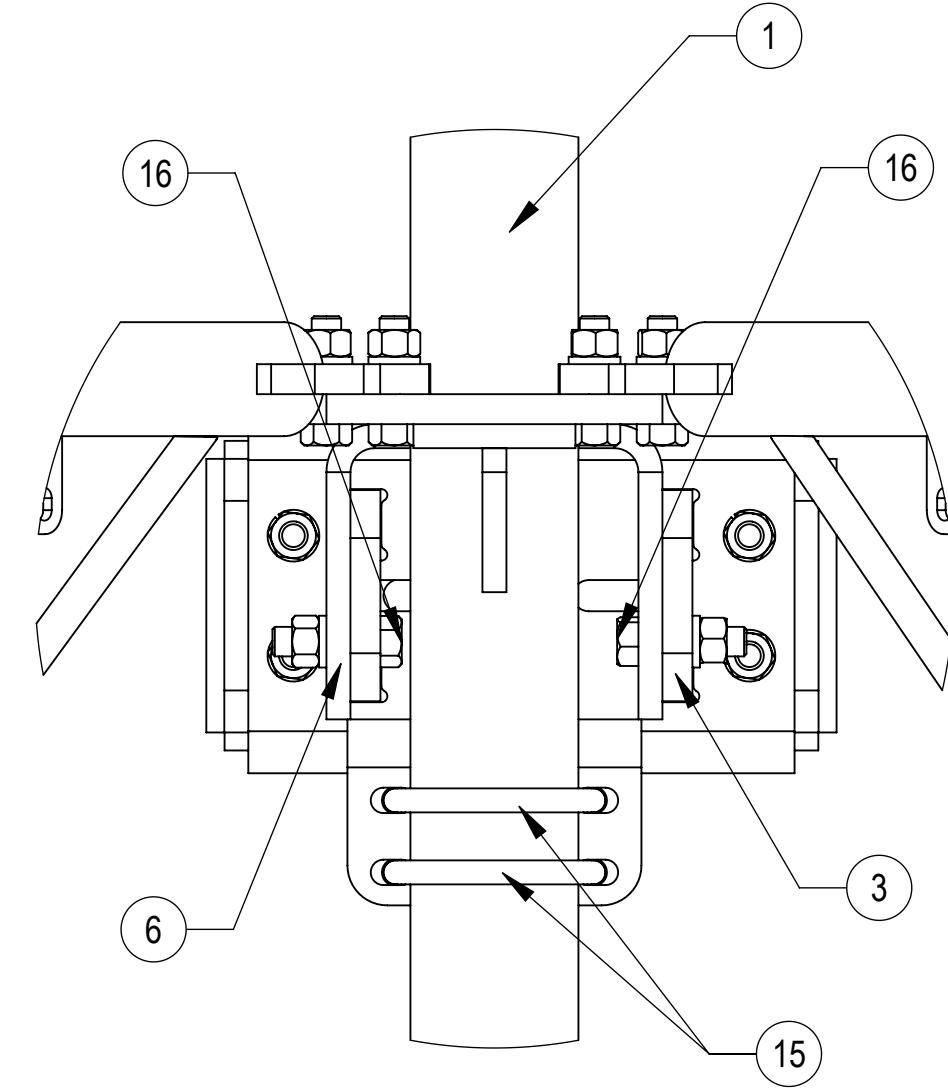
3

2

1

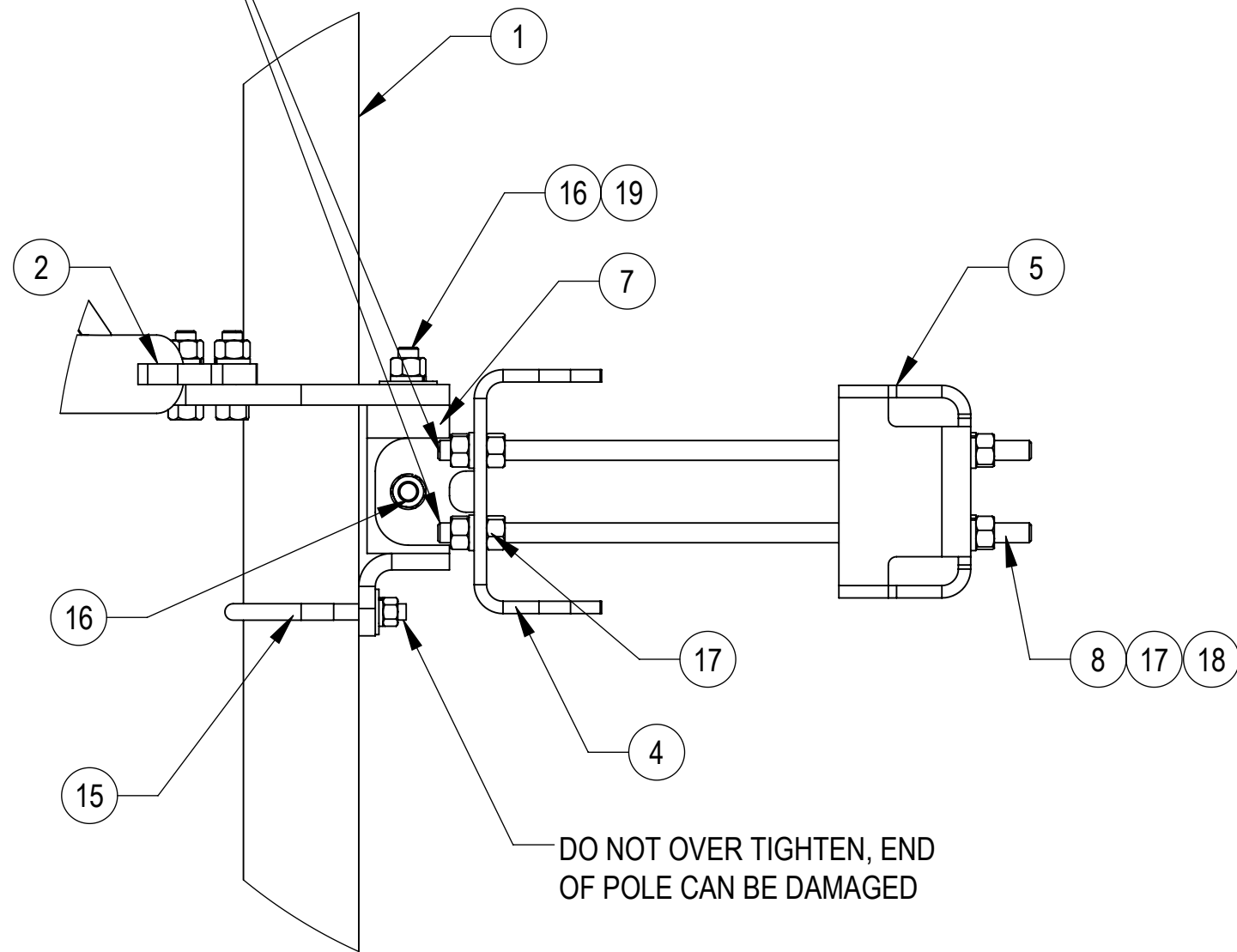


DETAIL E  
SCALE 1 : 5



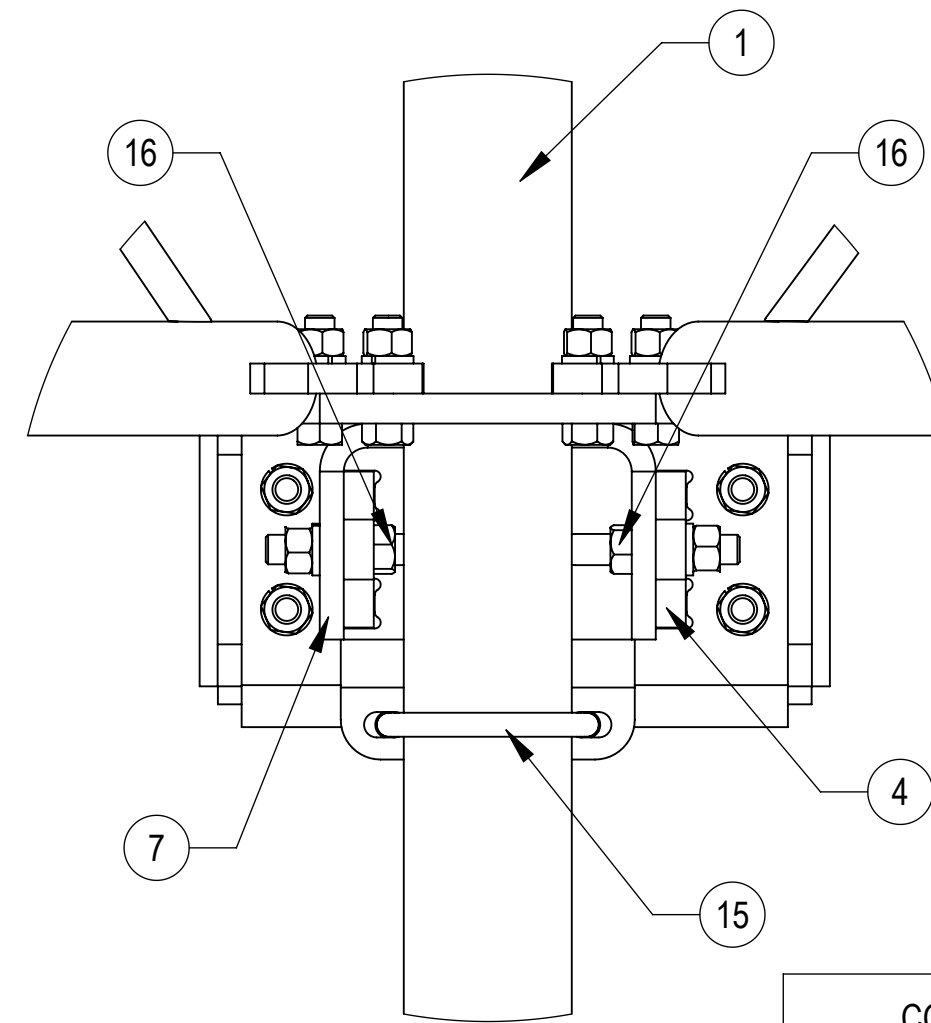
DETAIL G  
SCALE 1 : 4

THE THREADED ROD CAN ONLY EXPOSE 4 TO 7 THREADS ON ONE SIDE OF THE BRACKET, WHICH IS TO PREVENT INTERFERENCE WITH THE SIDE BOLTS

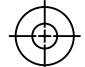
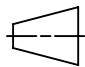


DETAIL F  
SCALE 1 : 5

DO NOT OVER TIGHTEN, END OF POLE CAN BE DAMAGED



DETAIL H  
SCALE 1 : 4

COMMSCOPE, INC. OF NORTH CAROLINA				
TITLE PG,SF,13'FP,(4)120"AP				
SIZE C	SCALE 1:20	DOCUMENT NO. SFG22RHDX-13-4-120		
DRAWING		VERSION	STATUS	REVISION
 		01	RE	B
				SHEET 4 OF 7

4

3

2

1

D

D

C

C

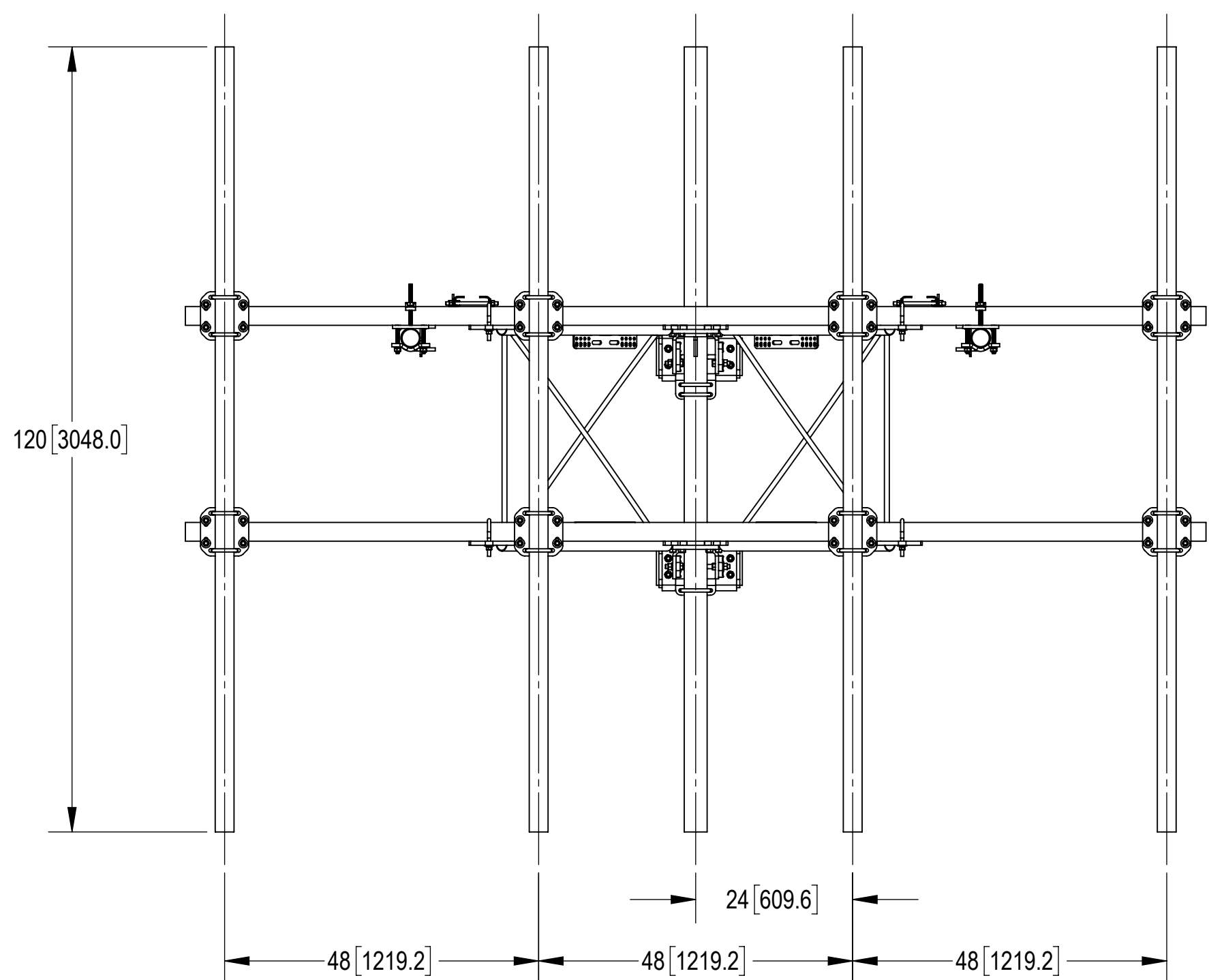
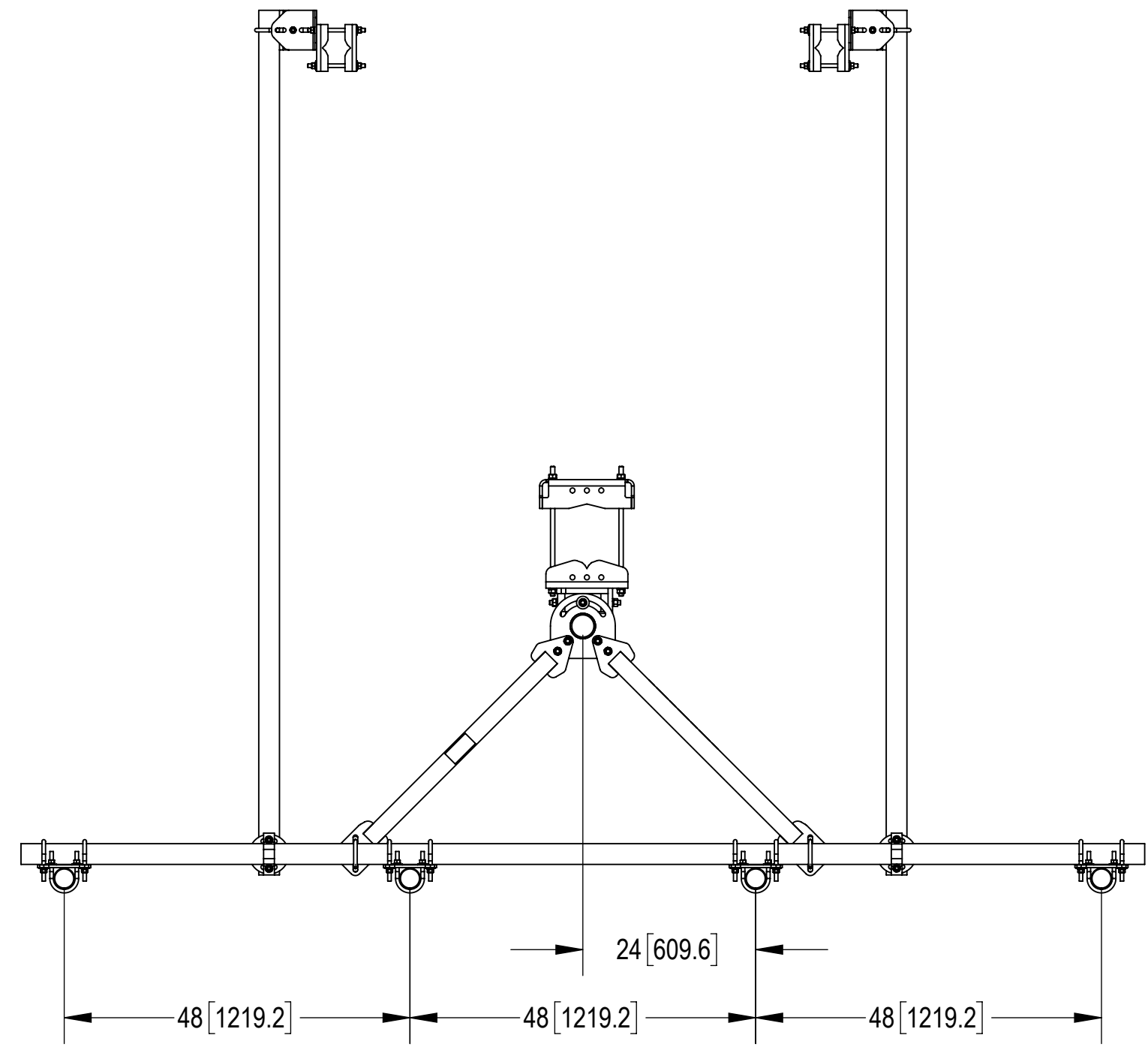
B

B

A

A

ANTENNA SPACING SHOWN



COMMSCOPE, INC. OF NORTH CAROLINA				
TITLE PG,SF,13'FP,(4)120"AP				
SIZE <b>C</b>	SCALE <b>1:22</b>	DOCUMENT NO. SFG22RHDx-13-4-120		
		DRAWING		SHEET
		VERSION	STATUS	REVISION
		01	RE	B
				5 OF 7

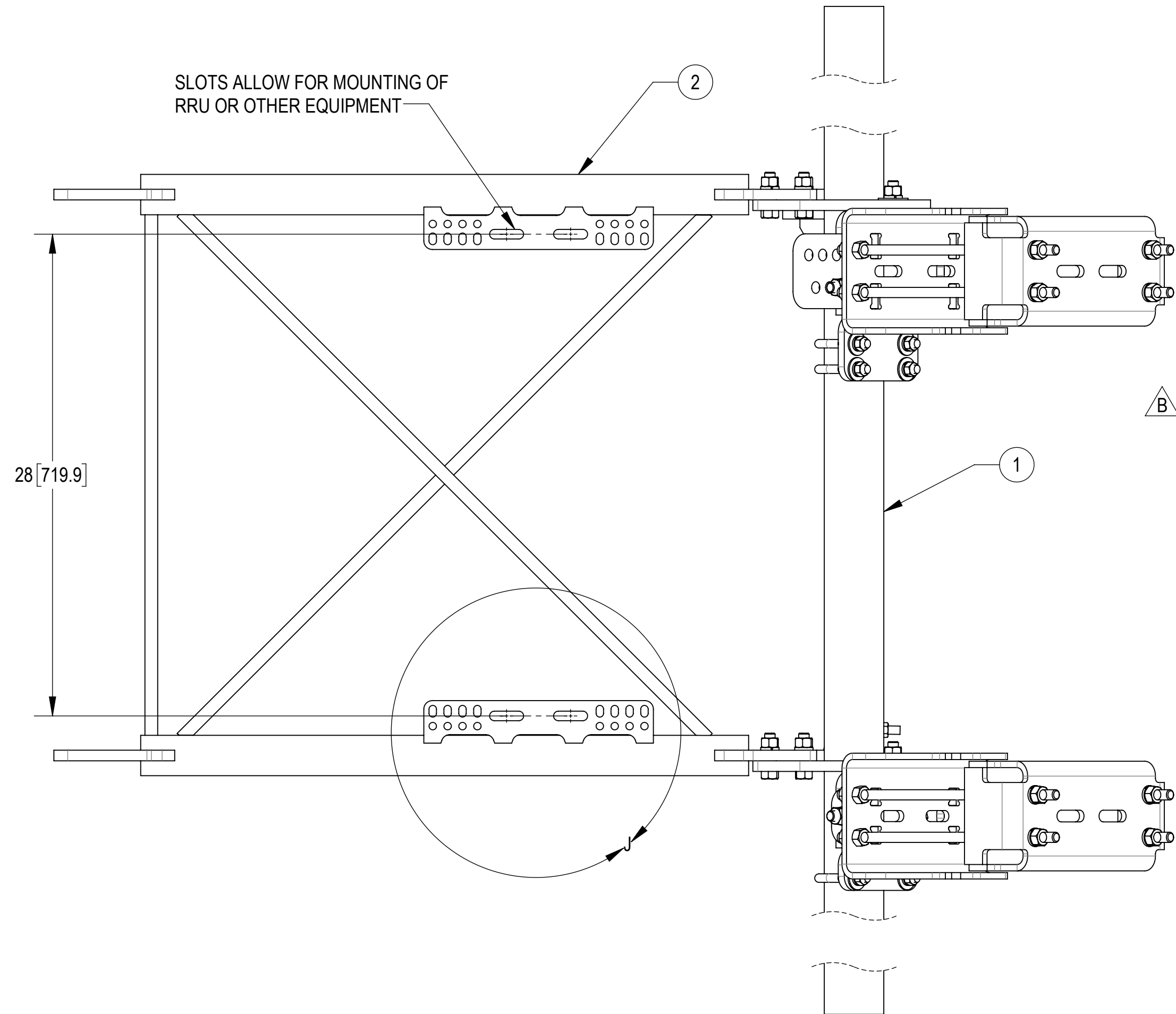
4

3

2

1

SLOTS ALLOW FOR MOUNTING OF RRU OR OTHER EQUIPMENT



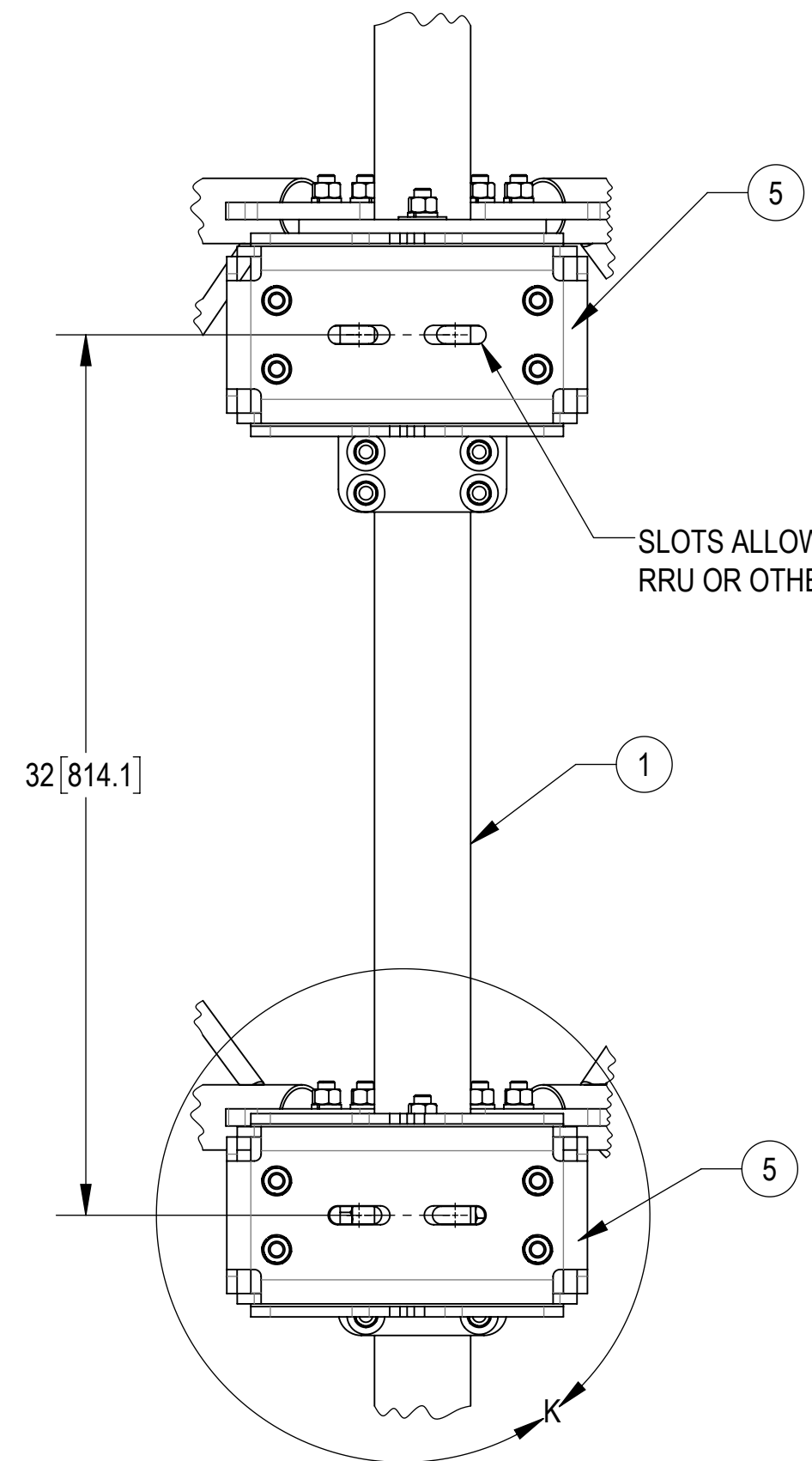
SIDE VIEW

28 [719.9]

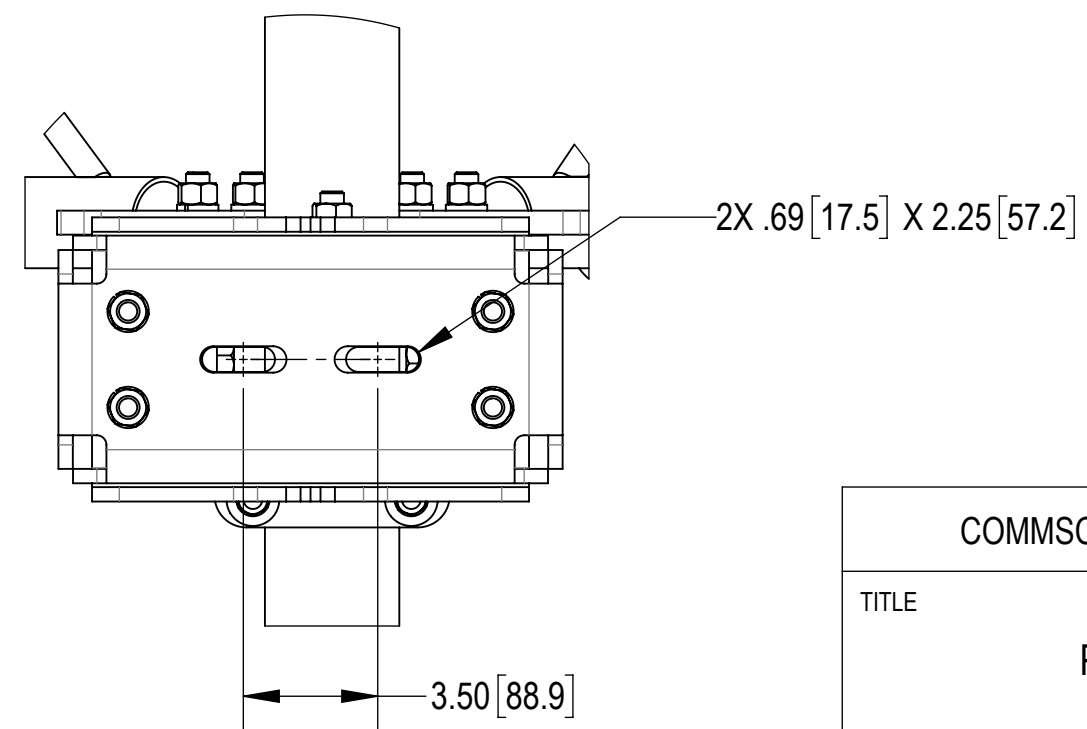
2

1

SLOTS ALLOW FOR MOUNTING OF RRU OR OTHER EQUIPMENT

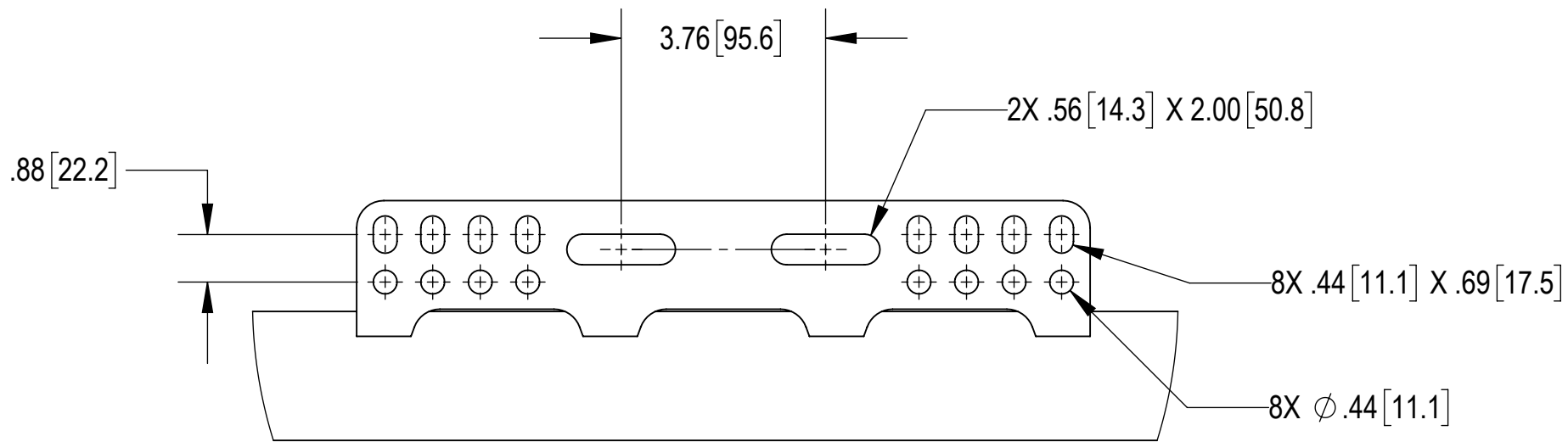


32 [814.1]



DETAIL K  
SCALE 1 : 5  
2 PLACES

© 2024 CommScope, Inc. Confidential



DETAIL J  
SCALE 1 : 3  
2 PLACES

COMMSCOPE, INC. OF NORTH CAROLINA

TITLE					
PG,SF,13'FP,(4)120"AP					
SIZE	SCALE	DOCUMENT NO.			
C	1:6	SFG22RHDX-13-4-120			
		DRAWING			SHEET 6 OF 7
		VERSION	STATUS	REVISION	
		01	RE	B	

4

3

2

1

4

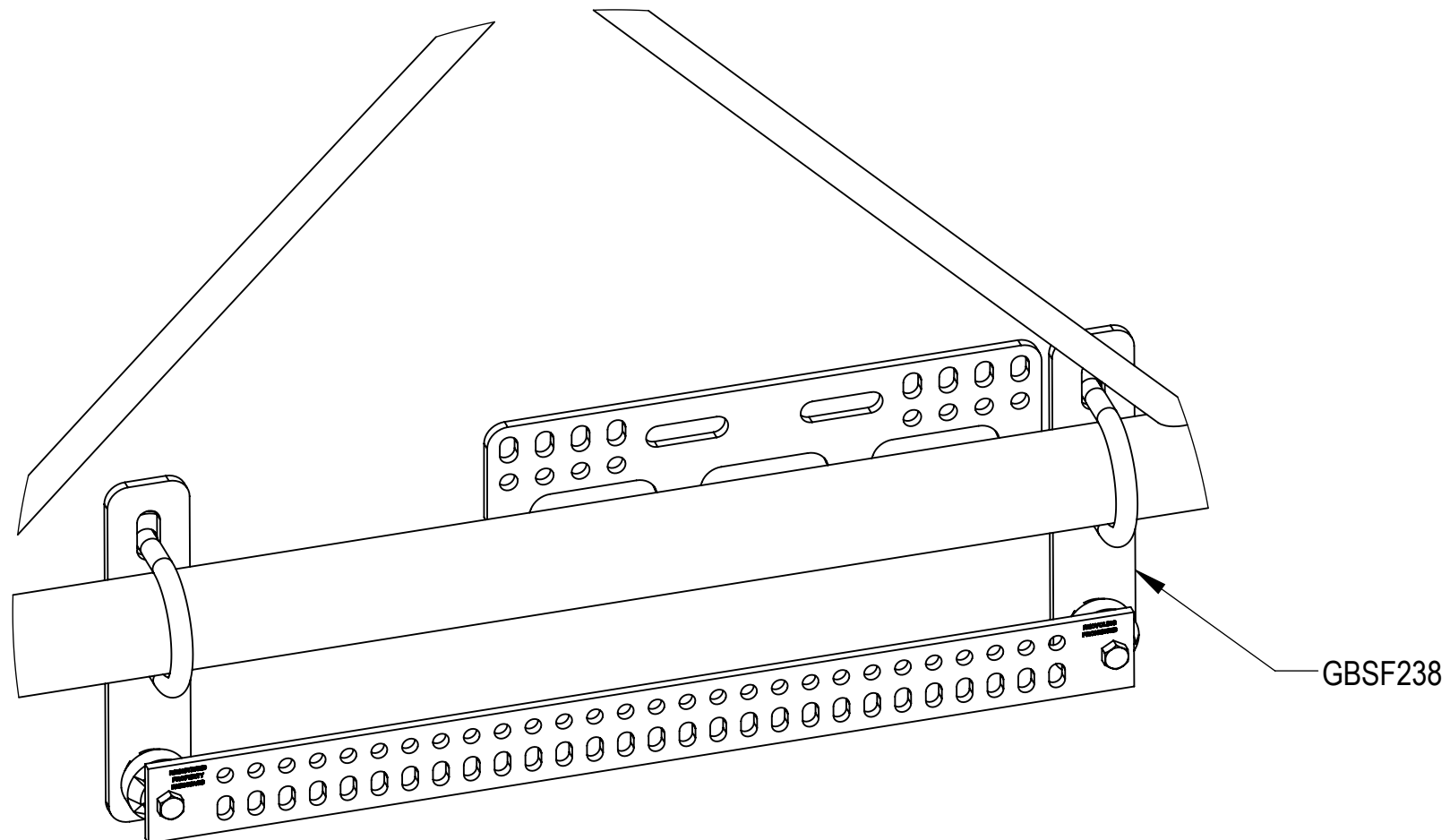
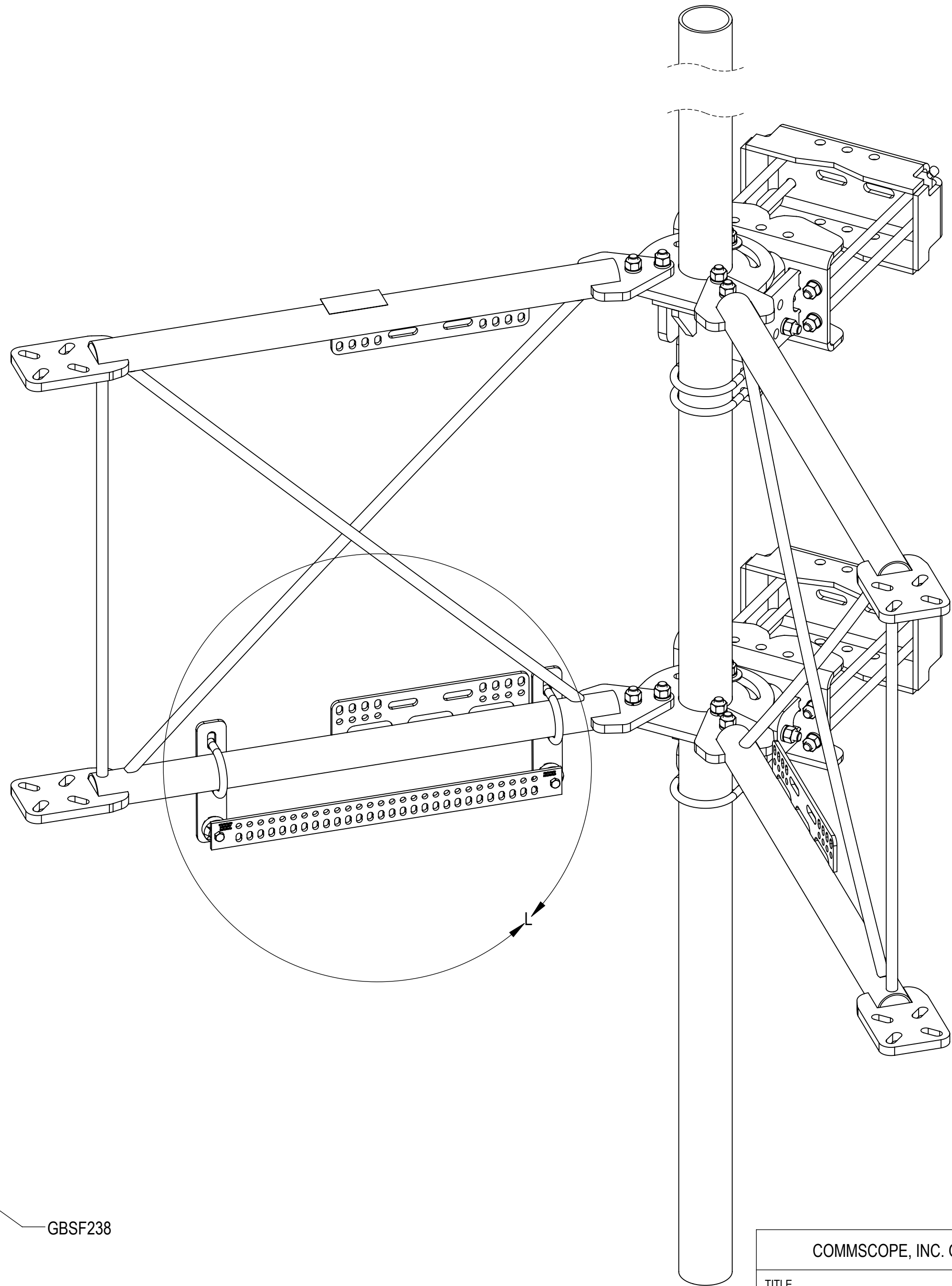
3

2

1

**OPTIONAL ACCESSORIES:**

BUS BAR MOUNT KIT GBSF238 IS WELL SUITED TO BE USED SHOULD THE NEED ARISE  
NOTE THAT THIS KIT DOES NOT INCLUDE THE ISOLATORS OR BUS BAR



DETAIL L  
SCALE 1:4


GBSF238

ISO VIEW

COMMSCOPE, INC. OF NORTH CAROLINA

TITLE  
PG,SF,13'FP,(4)120"AP

SIZE <b>C</b>	SCALE <b>1:6</b>	DOCUMENT NO. SFG22RHDX-13-4-120
------------------	---------------------	------------------------------------

	DRAWING			SHEET 7 OF 7
	VERSION 01	STATUS RE	REVISION B	

© 2024 CommScope, Inc. Confidential

4

3

2

1

D

D

C

C

B

B

A

A