

Oval Port Seal for FOSC 400 Splice Closures

FOSC ACC Cable Seal - X XX

↓ 1 = round port, 2 = oval port

B=Cable-blocking components included
N=No cable-blocking components

↑ T = Tubular seal
W = Wraparound seal

Figure 1

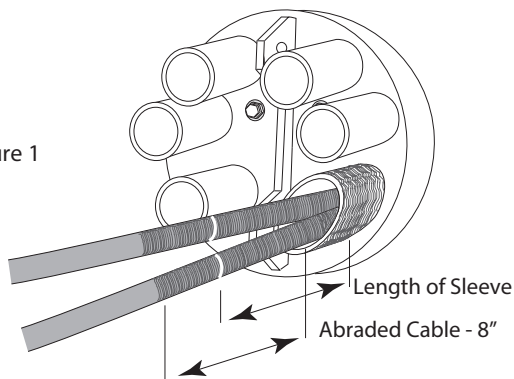


Figure 2

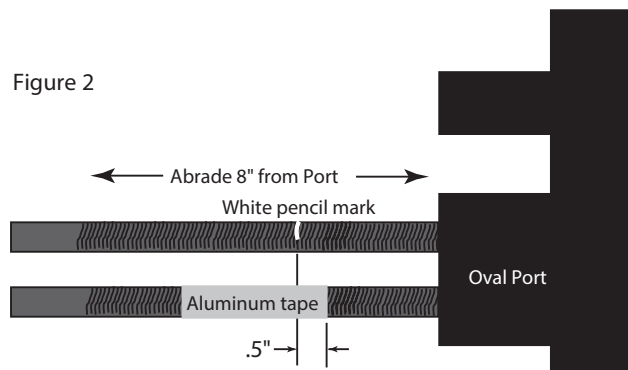
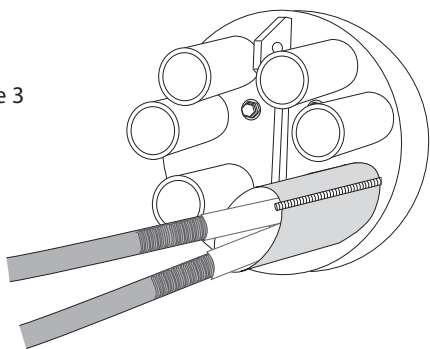


Figure 3



1.0 General Product Information

The FOSC ACC cable seal 2-XX kit contains the materials necessary to seal one mid-span cable or two cable ends into the oval port of any FOSC 400 series splice closure. The kit may contain a tubular or wraparound cable seal, and may also contain cable moisture blocking contents. The two-character extension terminating the kit's name defines its contents:

Note: This kit can be used on FOSC 100 and FOSC 200 series closures, as well as FOSC 400 series closures.

2.0 Additional Required Materials

- CV-1981 Hot-Air Gun with PR-26 tip

3.0 Cable Preparation

Refer to the FOSC 400 splice closure kit installation instructions for directions on preparing the cables for installation. In the FOSC ACC cable seal 2-BT kit, instructions for applying the cable blocking components are included with those components.

4.0 Cable Installation

Refer to the FOSC 400 splice closure kit installation instructions for directions on sealing a tubular oval port seal (FOSC ACC Cable Seal 2-NT and 2-BT kits).

To install a wraparound oval port seal (FOSC ACC Cable Seal 2-NW), follow these steps:

1. Clean the port and 8" of cable sheath beyond the port edge thoroughly with the supplied cleaning tissue.
2. Abrade the port and 8" of each cable sheath beyond the port edge with the abrasive strip. Remove any abraded material from the port and sheath with a clean, dry cloth.
3. Install the wraparound sleeve around the port and cable. Be sure that the inside edge of the sleeve butts against the FOSC 400 closure base. Squeeze the sleeve down onto the cable and place a white pencil mark on the cable just beyond the edge of the sleeve. (Figure 1)
4. Remove the sleeve temporarily and set it aside.
5. Wrap one lap of aluminum tape around each cable, overlapping the white pencil mark by 1/2" as shown in Figure 2.

6. Remove the detachable portion of the Velcro fastener strip from the wraparound sleeve. Peel the adhesive backing away from the strip, and wrap the strip around the oval port, abutting the strip against the base.
7. Wrap the sleeve around the port so that the rail is positioned as shown in Figure 3. Stick the Velcro fastener strip on the port as much as possible.
8. Slide the channel on the rail, being careful not to pinch the adhesive flap or the foam block between the rails. (Figure 4)
9. Install the branch-off clip as shown. The clip's base must touch the sleeve. (Figure 5)
10. Tie the end cables together with a tie wrap 1" beyond the end of the sleeve.
11. Using the CV1981 hot-air gun on setting 10, begin shrinking the sleeve at the end abutting the bases of the closure. Direct the air around the sleeve until the green paint turns black.
12. Continue heating the remainder of the sleeve as evenly as possible until it has completely conformed to the cables.
13. The seal is completely installed when:
 - Melted adhesive appears at the cable end of the sleeve, and
 - All green thermochromic paint on the tube has turned black.

Note: Do not overheat the sleeve or apply excessive heat to plastic parts of closure base.

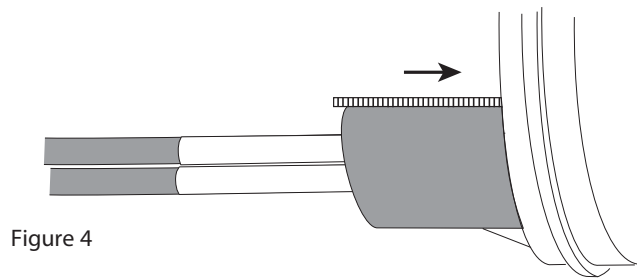


Figure 4

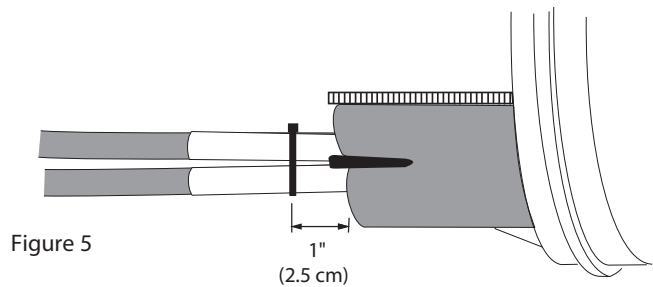


Figure 5

5.0 Fiber Splicing and Storage

Refer to the FOSC 400 splice closure kit installation instructions for directions on splicing fibers and storing the splices.

Technical Assistance Center (TAC)
 Tel.: 800.830.5056
 Email: TAC.Americas@commscope.com
 www.commscope.com

FOSC 100, FOSC 200, FOSC 400, Commscope logo and CommScope are trademarks.
 Velcro is a trademark of Velcro Industries B.V.

The information given herein, including drawings, illustrations and schematics which are intended for illustration purposes only, is believed to be reliable. However, CommScope makes no warranties as to its accuracy or completeness and disclaims any liability in connection with its use. CommScope's obligations shall only be as set forth in CommScope's Standard Terms and Conditions of Sale for this product and in no case will CommScope be liable for any incidental, indirect or consequential damages arising out of the sale, resale, use or misuse of the product. Users of CommScope products should make their own evaluation to determine the suitability of each such product for the specific application.