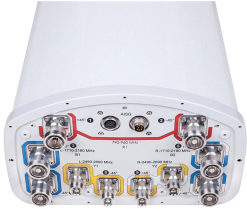


DHHTT65B-3XR



10-port sector antenna, 2x 790–960, 4x 1710–2180 and 4x 2490–2690 MHz, 65° HPBW, 3x RET with individual tilt available for the 850 MHz band, 1900 MHz bands and 2500 MHz bands.

Electrical Specifications

Frequency Band, MHz	790–896	870–960	1710–1880	1850–1990	1920–2180	2490–2690
Connector Interface	7-16 DIN Female	7-16 DIN Female	7-16 DIN Female	7-16 DIN Female	7-16 DIN Female	4.1-9.5 DIN Female
Connector Location	Bottom	Bottom	Bottom	Bottom	Bottom	Bottom
Gain, dBi	15.5	15.5	17.3	17.4	17.5	17.2
Beamwidth, Horizontal, degrees	64	63	71	69	66	60
Beamwidth, Vertical, degrees	11.2	10.3	5.6	5.4	5.1	4.3
Beam Tilt, degrees	0–10	0–10	0–8	0–8	0–8	0–8
USLS (First Lobe), dB	15	16	15	16	15	18
Front-to-Back Ratio at 180°, dB	28	31	31	29	25	26
CPR at Boresight, dB	20	19	20	20	18	16
CPR at Sector, dB	9	9	9	9	7	4
Isolation, Cross Polarization, dB	25	25	25	25	25	25
Isolation, Inter-band, dB	30	30	30	30	30	30
VSWR Return Loss, dB	1.5 14.0	1.5 14.0	1.5 14.0	1.5 14.0	1.5 14.0	1.5 14.0
PIM, 3rd Order, 2 x 20 W, dBc	-153	-153	-153	-153	-153	-150
Input Power per Port, maximum, watts	350	350	300	300	300	250
Polarization	±45°	±45°	±45°	±45°	±45°	±45°
Impedance	50 ohm	50 ohm	50 ohm	50 ohm	50 ohm	50 ohm

Electrical Specifications, BASTA*

Frequency Band, MHz	790–896	870–960	1710–1880	1850–1990	1920–2180	2490–2690
Gain by all Beam Tilts, average, dBi	15.0	15.1	17.0	17.1	17.1	17.1
Gain by all Beam Tilts Tolerance, dB	±0.4	±0.3	±0.3	±0.3	±0.3	±0.6
Gain by Beam Tilt, average, dBi	0° 15.0 5° 15.1 10° 15.0	0° 15.0 5° 15.1 10° 15.0	0° 16.8 4° 17.0 8° 17.0	0° 17.0 4° 17.1 8° 17.1	0° 17.0 4° 17.1 8° 17.1	0° 17.1 4° 17.2 8° 17.0
Beamwidth, Horizontal Tolerance, degrees	±2.5	±1.8	±3.2	±2.7	±5	±6.6
Beamwidth, Vertical Tolerance, degrees	±0.8	±0.6	±0.2	±0.2	±0.4	±0.3
USLS, beampeak to 20° above beampeak, dB	16	17	16	17	16	19
Front-to-Back Total Power at 180° ± 30°, dB	24	26	26	25	23	23
CPR at Boresight, dB	21	20	22	22	21	16
CPR at Sector, dB	9	10	13	10	8	5

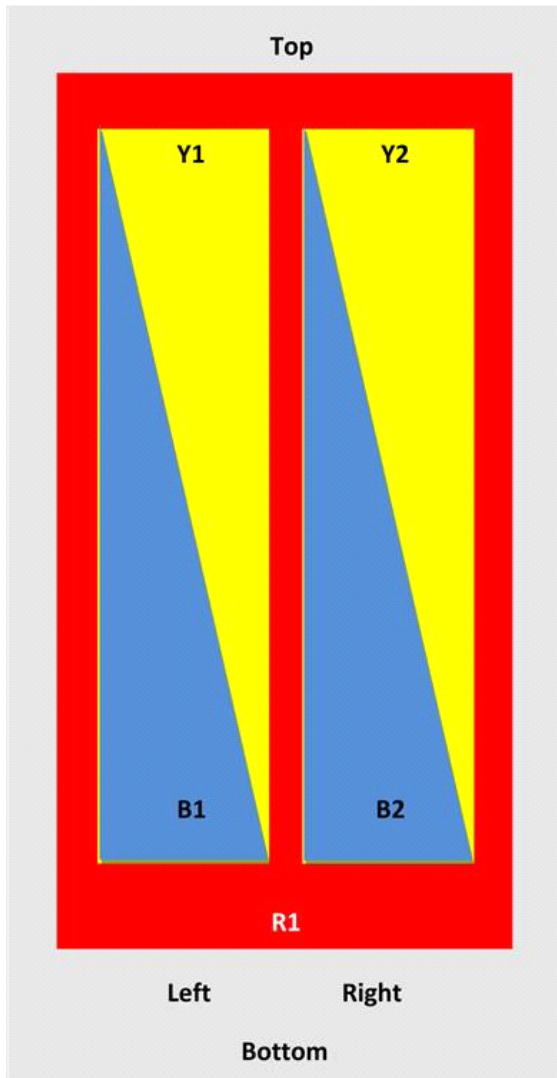
* CommScope® supports NGMN recommendations on Base Station Antenna Standards (BASTA). To learn more about the benefits of BASTA, [download the](#)

DHHTT65B-3XR

[whitepaper Time to Raise the Bar on BSAs.](#)

Array Layout

DHHTT65B-3XR



Array	Freq (MHz)	Conns	RET (MRET)	AISG RET UID
R1	790-960	1-2	1	ANXXXXXXXXXXXXXXXXX.1
B1	1710-2180	3-4	2	ANXXXXXXXXXXXXXXXXX.2
B2	1710-2180	5-6	3	
Y1	2490-2690	7-8	4	ANXXXXXXXXXXXXXXXXX.3
Y2	2490-2690	9-10	5	

View from the front of the antenna

(Sizes of colored boxes are not true depictions of array sizes)

DHHTT65B-3XR

General Specifications

Operating Frequency Band	1710 – 2180 MHz 2490 – 2690 MHz 790 – 960 MHz
Antenna Type	Sector
Band	Multiband
Performance Note	Outdoor usage Wind loading figures are validated by wind tunnel measurements described in white paper WP-112534-EN

Mechanical Specifications

RF Connector Quantity, total	10
RF Connector Quantity, low band	2
RF Connector Quantity, high band	8
RF Connector Interface	4.1-9.5 DIN Female 7-16 DIN Female
Color	Light gray
Grounding Type	RF connector inner conductor and body grounded to reflector and mounting bracket
Radiator Material	Copper Low loss circuit board
Radome Material	ASA, UV stabilized
Reflector Material	Aluminum
RF Connector Location	Bottom
Wind Loading, frontal	279.0 N @ 150 km/h 62.7 lbf @ 150 km/h
Wind Loading, frontal (temporary)	279.0 N @ 150 km/h 62.7 lbf @ 150 km/h
Wind Loading, lateral	231.0 N @ 150 km/h 51.9 lbf @ 150 km/h
Wind Loading, lateral (temporary)	231.0 N @ 150 km/h 51.9 lbf @ 150 km/h
Wind Loading, maximum	538.0 N @ 150 km/h 120.9 lbf @ 150 km/h
Wind Loading, maximum (temporary)	538.0 N @ 150 km/h 120.9 lbf @ 150 km/h
Wind Speed, maximum	241 km/h 150 mph

Dimensions

Length	1832.0 mm 72.1 in
Width	301.0 mm 11.9 in
Depth	181.0 mm 7.1 in
Net Weight, without mounting kit	20.6 kg 45.4 lb

Remote Electrical Tilt (RET) Information

Input Voltage	10–30 Vdc
Power Consumption, idle state, maximum	2 W
Power Consumption, normal conditions, maximum	13 W
Protocol	3GPP/AISG 2.0 (Multi-RET)

DHHTT65B-3XR

RET Interface 8-pin DIN Female | 8-pin DIN Male
RET Interface, quantity 1 female | 1 male

Packed Dimensions

Length 1954.0 mm | 76.9 in
Width 409.0 mm | 16.1 in
Depth 299.0 mm | 11.8 in
Shipping Weight 33.2 kg | 73.2 lb

Regulatory Compliance/Certifications

Agency

RoHS 2011/65/EU
ISO 9001:2015
China RoHS SJ/T 11364-2014

Classification

Compliant by Exemption
Designed, manufactured and/or distributed under this quality management system
Above Maximum Concentration Value (MCV)



Included Products

BSAMNT-3 — Wide Profile Antenna Downtilt Mounting Kit for 2.4 - 4.5 in (60 - 115 mm) OD round members. Kit contains one scissor top bracket set and one bottom bracket set.

* Footnotes

Performance Note Severe environmental conditions may degrade optimum performance